

Duplicate MIDSHIP SECTION

OF A STEEL SPAR DECK STEAMER.

SCALE 1/2 INCH TO ONE FOOT.

DIMENSIONS.

LENGTH OVER ALL 322'6" DEPTH TO TANK TOP 25'6"
Do B.P. 308'1" Do MOULDED 28'6"
BREADTH EXTREME 40'6" CLASS AT LLOYDS 100 A.1.

SPAR DECK RULE.

EQUIPMENT.

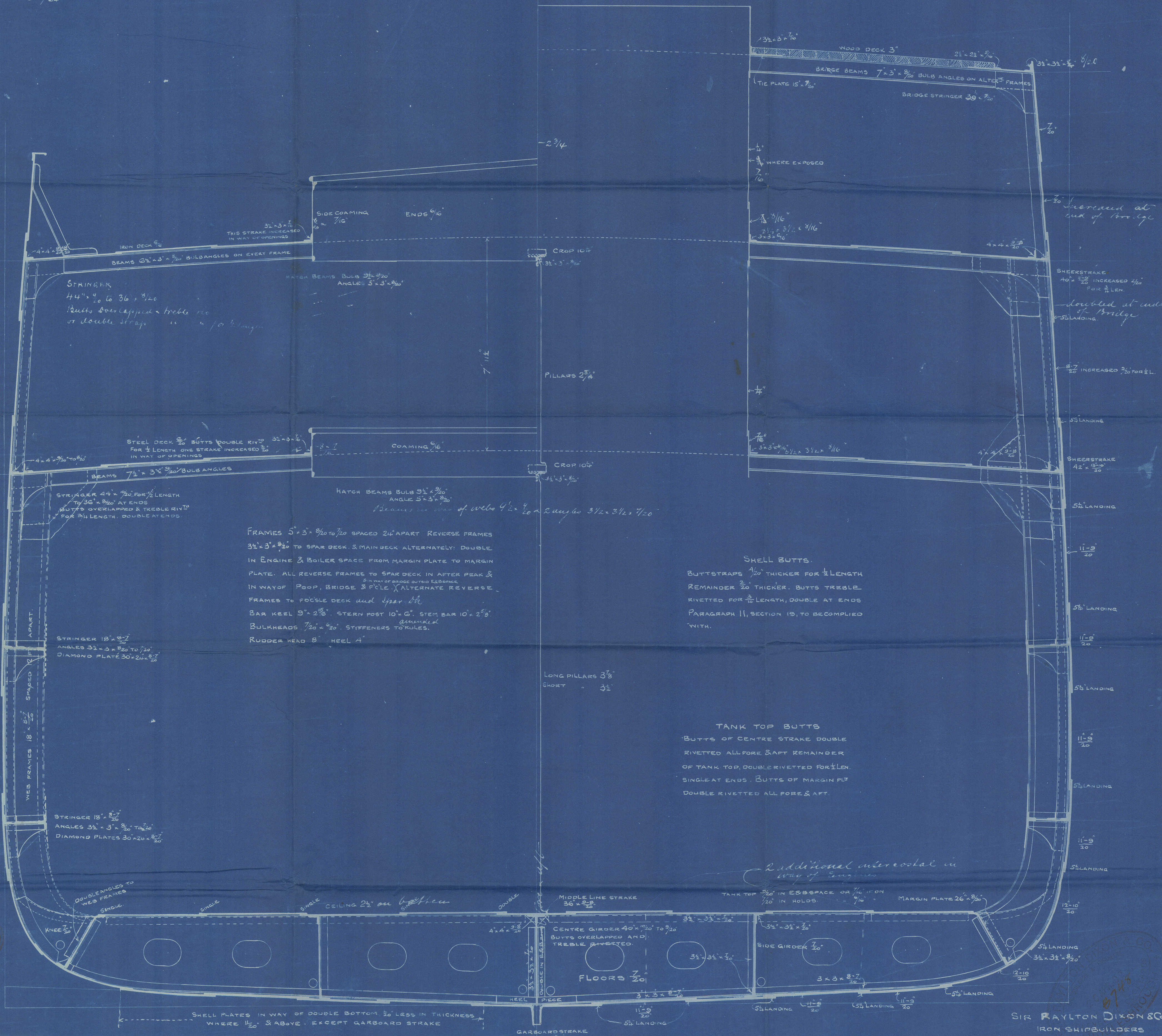
2 BOWER ANCHORS EX STOCK = 362 CWT.
1 Do Do = 31 "
1 STREAM Do Do = 11 1/2 "
1 KEDGE Do Do = 5 1/2 "
300 FATHOMS OF 1 1/2" STUD CHAIN CABLE.
90 Do 1 1/2" STREAM CHAIN OR 1 1/4" STEEL WIRE.
100 Do 12' HEMP OR 4" STEEL WIRE.
90 Do 10' HAWSER.
90 Do 8 1/2" WARP.

EQUIPMENT No. = 30178-30296.

NUMERALS	
1 GIRTH	37.46
1 BREADTH	20.16
DEPTH	20.83
	78.45
	308.03
	627.60
	2353.500
	24168.8760

PROPORTIONS.

DEPTH TO LENGTH SPAR DECK = 10.79
Do Do MAIN DECK = 14.78
BREADTH Do = 7.64



N^o 361.

SIR RAYLTON DIXON & CO
IRON SHIPBUILDERS
CLEVELAND DOCKYARD
MIDDLESBROUGH, TEES

Corrected to Lloyd's
24/1/11 11/11

MOB 744 0141

Sir Raylton Dixon & Co.

S.S. N° 361

Open Decked

S.S. "Afrikander"
Duplicate.

Midship Section.

N° 360 s/s "Kaffir"	Report-N°	
N° 361 s/s "Afrikander"	"	643
N° 362 s/s "Jaansvaal"	"	
N° 363 s/s "Zulu"	"	704



MDB744 - 0141