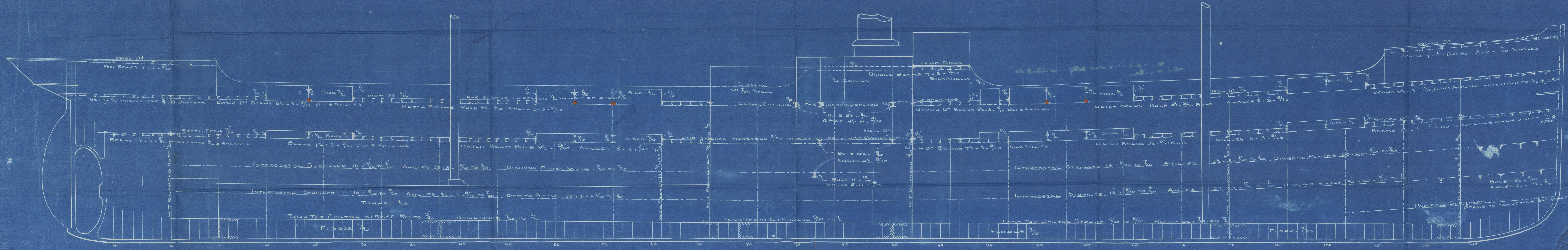


AMENDED *to agree with ship.* PROFILE

LENGTH OVERALL 322' 6" DEPTH TO TANK TOP 25' 6"
 LENGTH B.P. 308' 1" DEPTH MOULDED 28' 0"
 BREADTH (EXT) 40' 6" CLASS AT LLOYD'S 100 A.1

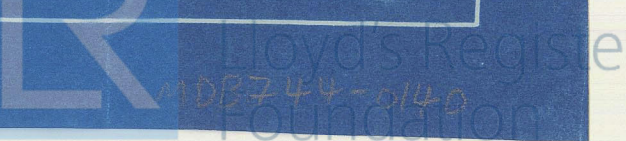
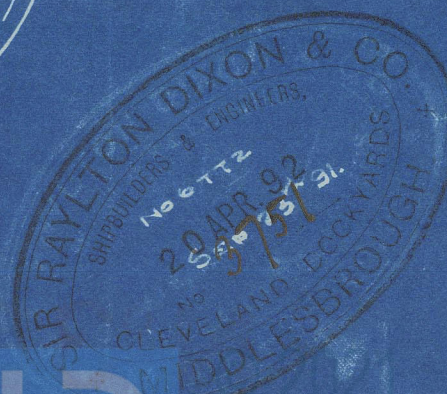


— SCALE 1/8 INCH = 1 FOOT —

SEMI BOX BEAMS WEB PLATES + BULB ANGLE
 TO BULKHEAD AS REQUIRED BY THE RULE

SIR RAYLTON DIXON & CO
 IRON SHIPBUILDERS
 CLEVELAND DOCKYARD
 MIDDLESBROUGH ON TEES

Nº361



Sir Raylton Dixon & Co.

S.S. N^o 361.

Open Decked

Elevation.

N^o 360 s/s "Kaffir" report N^o

N^o 361 s/s "Afrikander" " 6 2/3

N^o 362 s/s "Franswaal" "

N^o 363 s/s "Zulu" " 4 0/4



MDB744 -- 0140

Lloyd's Register
Foundation