

S. S. Storm King

Received at

Office,

18

Lloyd's Register of British and Foreign Shipping.

Wpool

(Report on Vessel No. *09* Port *Middlebro'*)

No. *12410*

SHIP FORGINGS ~~OR~~ CASTINGS.

I have to report that the undermentioned Iron ~~or~~ Steel Forgings ~~or~~ Castings, manufactured by

The Darlington Lye Co. of *Darlington*
for the Vessel No. *304*, being built by *Messrs R Dixon & Co.*
of *Middlebro'* have been inspected by me as set forth below, and found
to be, so far as can be seen, *sound.*

Mark on Forgings.

Lloyd's

No. *12410*

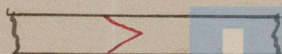
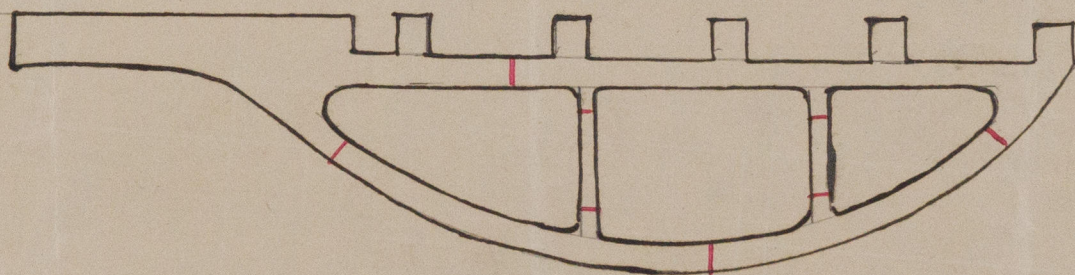
W.C.

Wm Cameron

Sunderland

	STERN FRAME.	RUDDER FRAME.	STEM.
Material* - - -	<i>Cast steel</i>	<i>Scrap iron</i>	<i>Scrap iron</i>
How made - - -	<i>Cast in 2 parts</i>	<i>Fayed</i>	<i>Fayed</i>
Dimensions - - -	<i>as per drawing attached</i>	<i>8 1/2</i>	<i>11 + 2 3/4</i>
Progress on Inspection -	<i>cast and finished</i>	<i>Fayed & milled</i>	<i>Fayed</i>
Dates when Inspected	<i>May 14-26 July 19/89</i>	<i>Nov 21-22-28 Dec 3-6-11-20/89</i>	<i>March 18/89</i>
		<i>Jan 8/90</i>	

SKETCHES OF FRAMES SHEWING POSITION AND DESCRIPTION OF WELDS OF FORGINGS, OR PARTICULARS OF TESTS APPLIED TO CASTINGS.



Welds

© 2019

Lloyd's Register
Foundation

