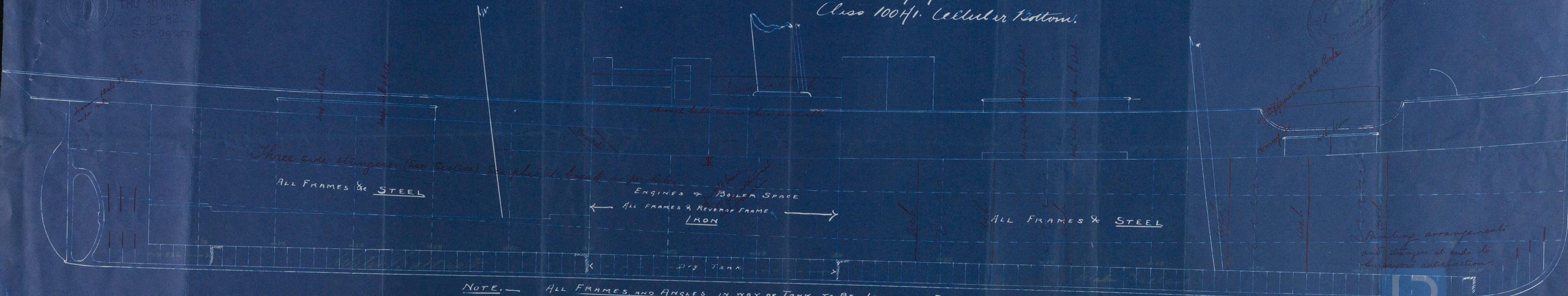


Profile of Steel Screw Steamer No 121
 221.6' x 32.0' x 14.0' Depth moulded.
 Class 100H1. Cellular Bottom.

THU 30 MAY 89
 12 SEP 89
 SAT 28 SEP 89



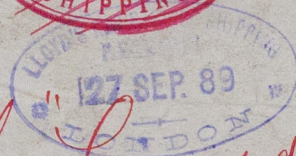
NOTE. — ALL FRAMES AND ANGLES IN WAY OF TANK TO BE IRON
 PLATES TO BE STEEL
 DEEP FLOOR ON EVERY FRAME.

10/6
 30/5/89
 Lloyd's Register
 Foundation
 MBB 734/66

Lloyds Profile
No 121 \$1

W. Harveson Row
Steel S.S. No 121

Elevation



S.S. Groydon



MDB739/66



© 2019

Lloyd's Register
Foundation