

Scantling Numbers
 Half Breadth — 21' 4 3/4"
 Depth — 21' 11 1/2"
 Half Bulk — 38' 7 3/4"

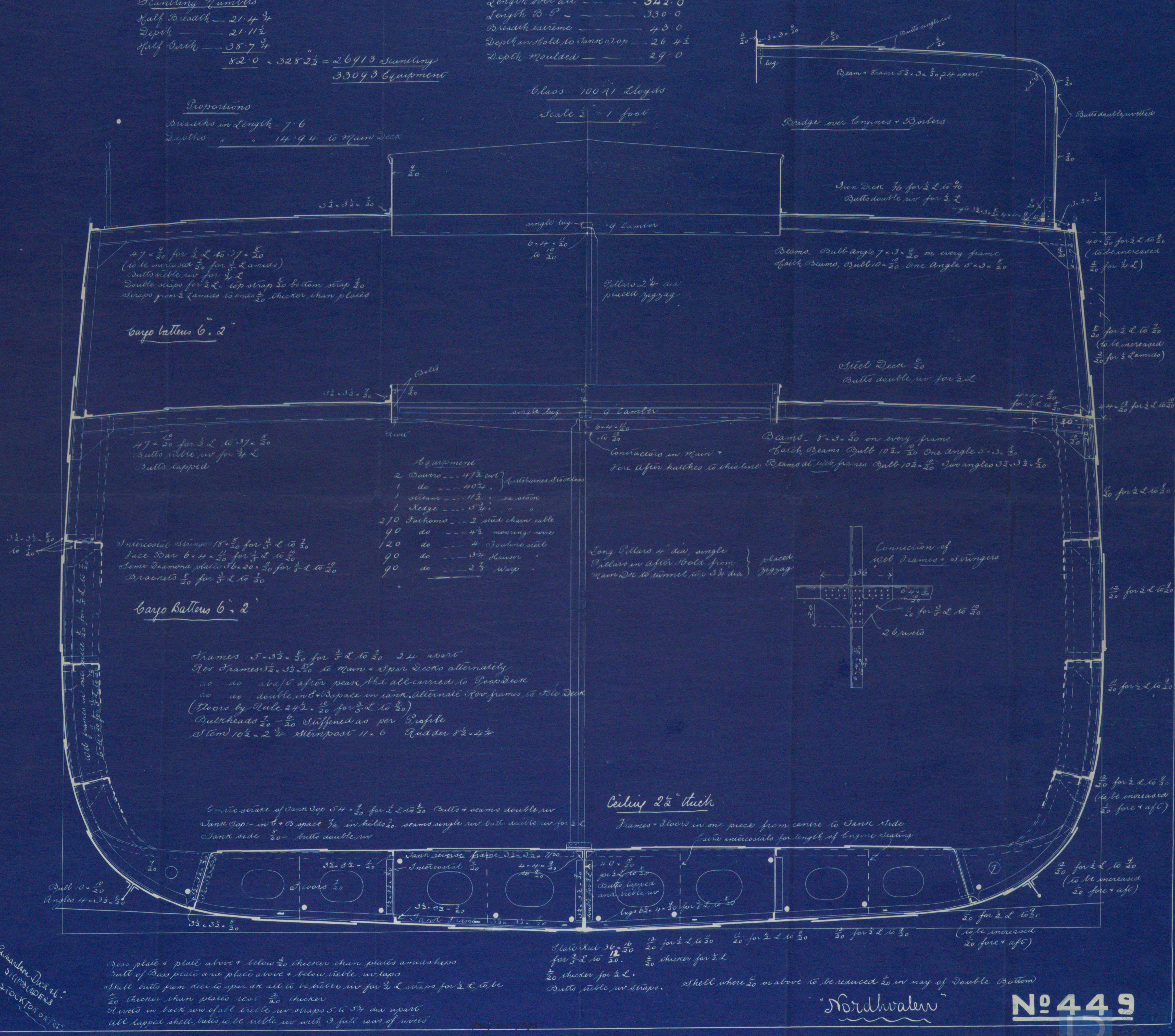
82' 0" x 32' 8 1/2" = 26413 Scantling
 33093 Equipment

Proportions
 Breadths in Length — 7.6
 Depths — 14.94 to Main Deck

Principal Dimensions
 Length over all — 342.0
 Length B. P. — 330.0
 Breadth extreme — 43.0
 Depth in hold to Tank Top — 26.4 1/2
 Depth moulded — 29.0

Class 100 1/1 Lloyd's

Scale 1/2" = 1 foot



47 x 5/8 for 1/2 L to 3/4 L
 (to be increased 1/20 for 3/4 L and 1/20 for 1/2 L)
 Double rivets for 1/2 L
 Double straps for 1/2 L top strap 20 bottom strap 20
 Straps from 2 frames to ends 20 thicker than plates

Cargo bulkheads 6 x 2

47 x 5/8 for 1/2 L to 3/4 L
 (Bulls little riv for 3/4 L)
 Bulls lapped

Intercoastal stringer 18 x 5/8 for 3/4 L to 2/3
 Face Bar 6 x 4 x 5/8 for 1/2 L to 2/3
 Semi Diamond plate 36 x 20 x 5/8 for 1/2 L to 2/3
 Brackets 5/8 for 1/2 L to 2/3

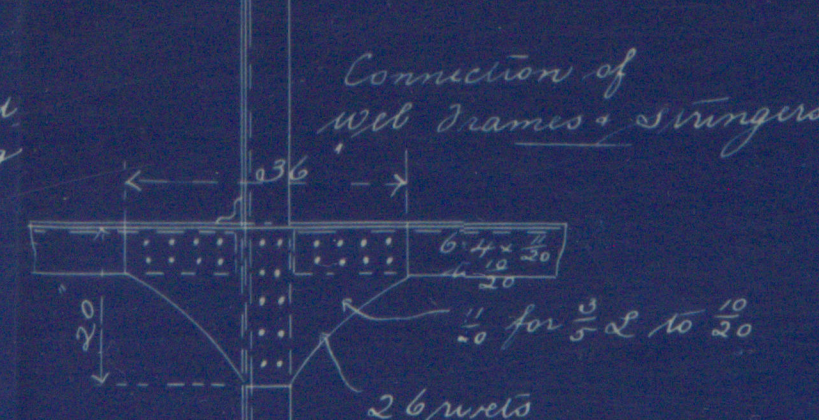
Cargo bulkheads 6 x 2

Frames 5 x 3 1/2 x 5/8 for 3/4 L to 2/3 24' apart
 Rev frames 3 1/2 x 5/8 to Main + Spar Decks alternately
 do do abaft after peak and all carried to Poop Deck
 do do double in 6' 0" space in tank alternate rev frames to Fore Deck
 (Floors by Rule 24 1/2 x 5/8 for 3/4 L to 2/3)
 Bulkheads 1/2 - 2/3 Stiffened as per Profile
 Stem 10 1/2 - 2 3/4 Sternpost 11 - 6 Rudder 8 1/2 - 4 1/4

Centre girder of Tank Top 5 1/4 x 5/8 for 1/2 L to 2/3 Bulls + seams double riv
 Tank Top in 6' 0" space 7/8 in holds 20 seams single riv bulls double riv for 1/2 L
 Tank side 20 Bulls double riv

Equipment
 2 Bowers — 47 1/2' cut
 1 do — 40 1/2' cut
 1 stream — 11 1/2' cut
 1 Kedge — 5 1/4' cut
 270 Fathoms — 2 stud chain cable
 90 do — 4 1/2' mooring wire
 120 do — 4' towing steel
 90 do — 3 1/4' hauler
 90 do — 2 3/4' warp

Long Pillars 4" dia single
 Pillars in After Hold from
 Main Deck to tunnel 10 3/4 dia



Ceiling 2 1/2 thick

Frames + floors in one piece from centre to Tank side
 with intercostals for length of engine seating

Plate steel 36 x 16 1/2 for 1/2 L to 2/3 1/20 for 1/2 L to 2/3 1/20 for 1/2 L to 2/3 1/20 for 1/2 L to 2/3
 for 1/2 L to 2/3 1/20 thicker for 1/2 L
 20 thicker for 1/2 L
 Bulls little riv straps. Shell where 20 or above to be reduced 20 in way of Double Bottom

Richardson Dock at
 STAMPAUDEN
 STOCKTON ON RIVER

Nordwalen

Nº 449

Friendship Section

Richardson Duck VCo

No 449.

S.S. "Nordhvalen"

Intro Report - No 1494



MBB 752 - 0002



© 2019

Lloyd's Register
Foundation