

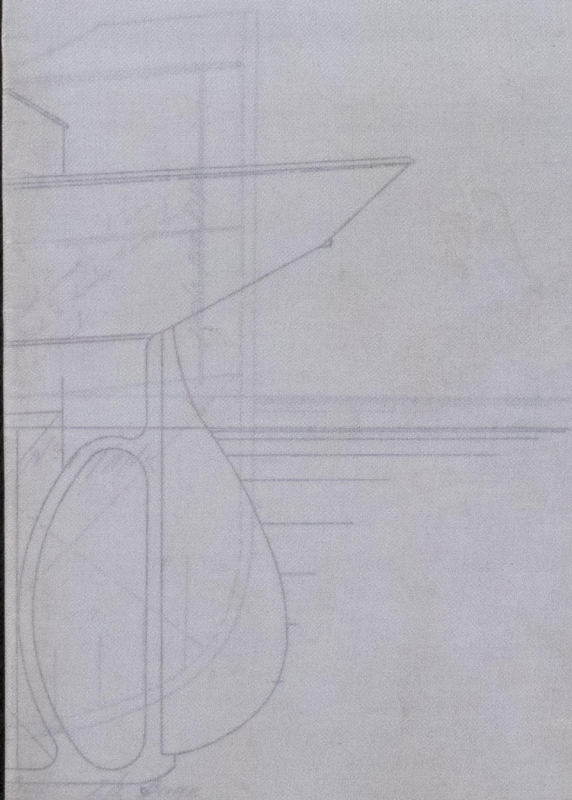
meurs. Ramege & Ferguson (Lim.)

S. S. No 161

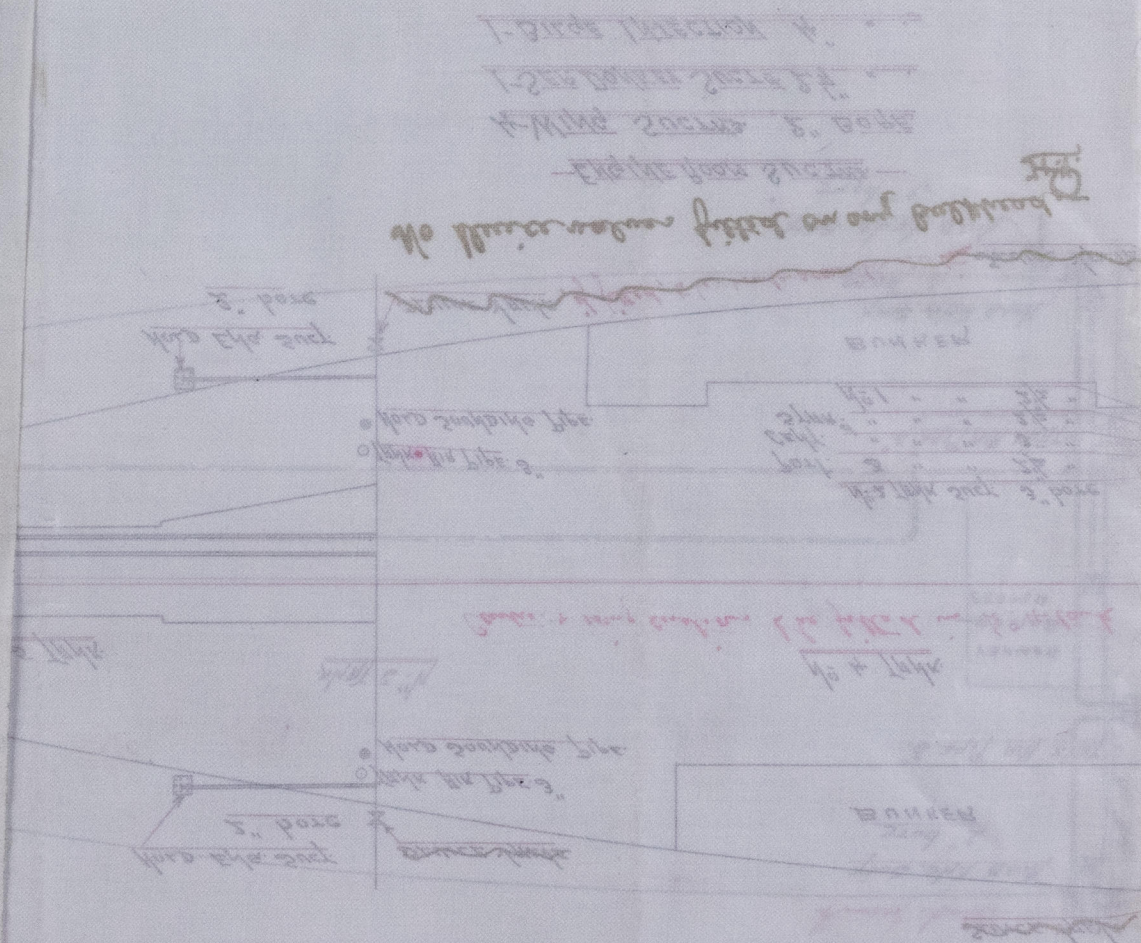
"Sifka"

Lth. Rept. No 8901

Handwritten notes and signatures, including "Sifka" and "Lth. Rept. No 8901".



LTH 568-0052

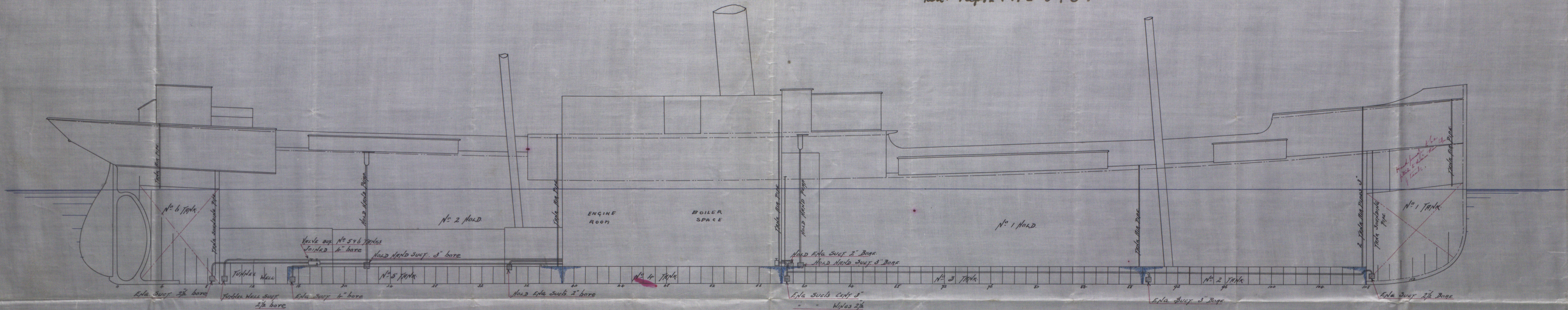


© 2019

Lloyd's Register  
Foundation



1. 1. "Sifka"  
Rech. Repert. № 8901



TONNAGE UNDER UPPER DECK = 879 TONS (APPROXIMATELY)

— PLAN SHOWING SUCTIONS.

\$ \$ N<sup>o</sup> 161.

- 224'-0" x 33'-0" x 14'-3"

$$\frac{1}{8}'' = 1 \text{ FT.}$$


Gms

12<sup>th</sup> May '98.  
H.T.