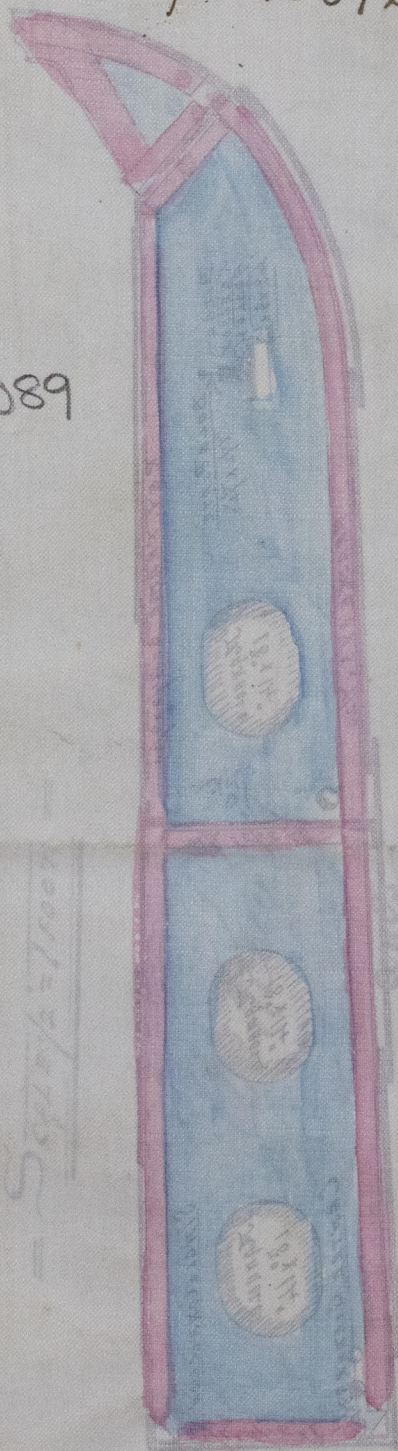


Ramages, Ferguson (Linn)

Invin S. S. No 157

"Natuna" Lth. Rept. No 8728

LTH567-0089

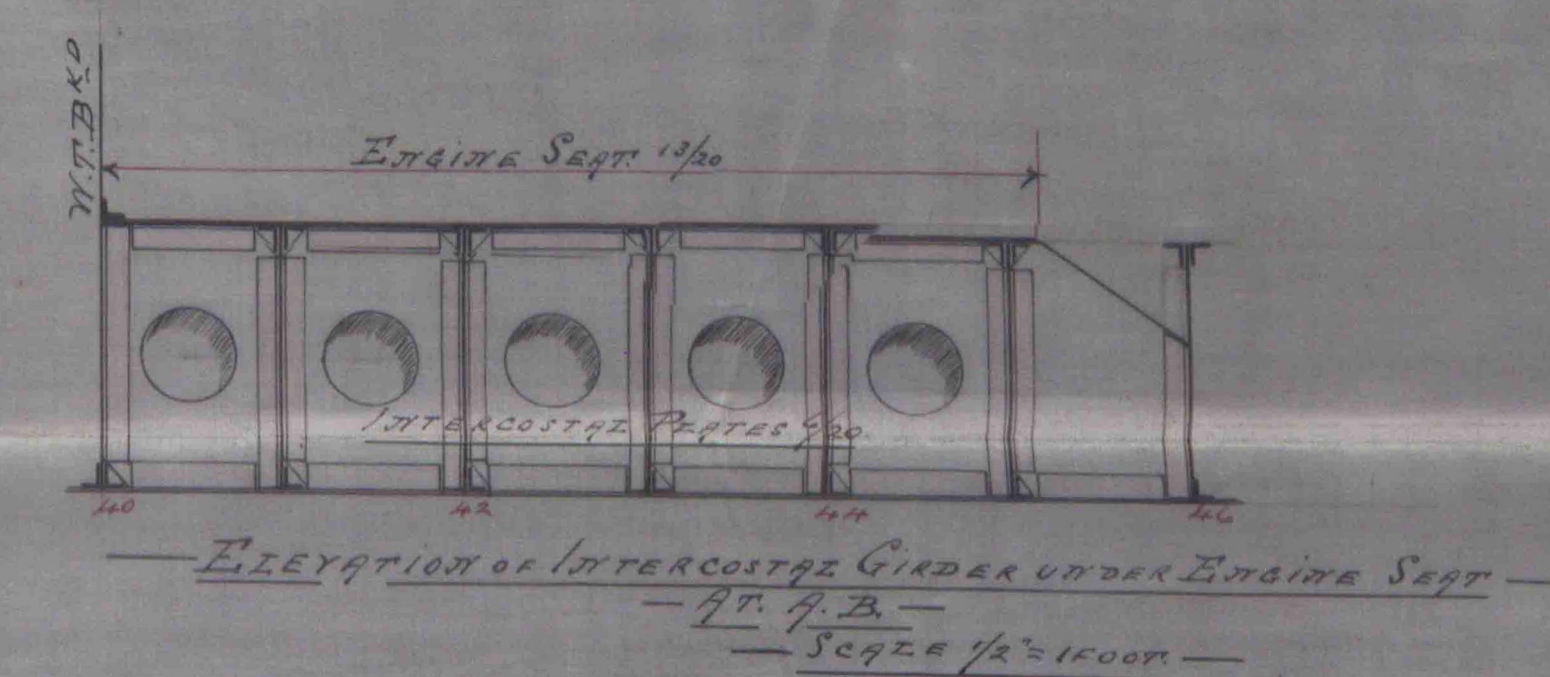
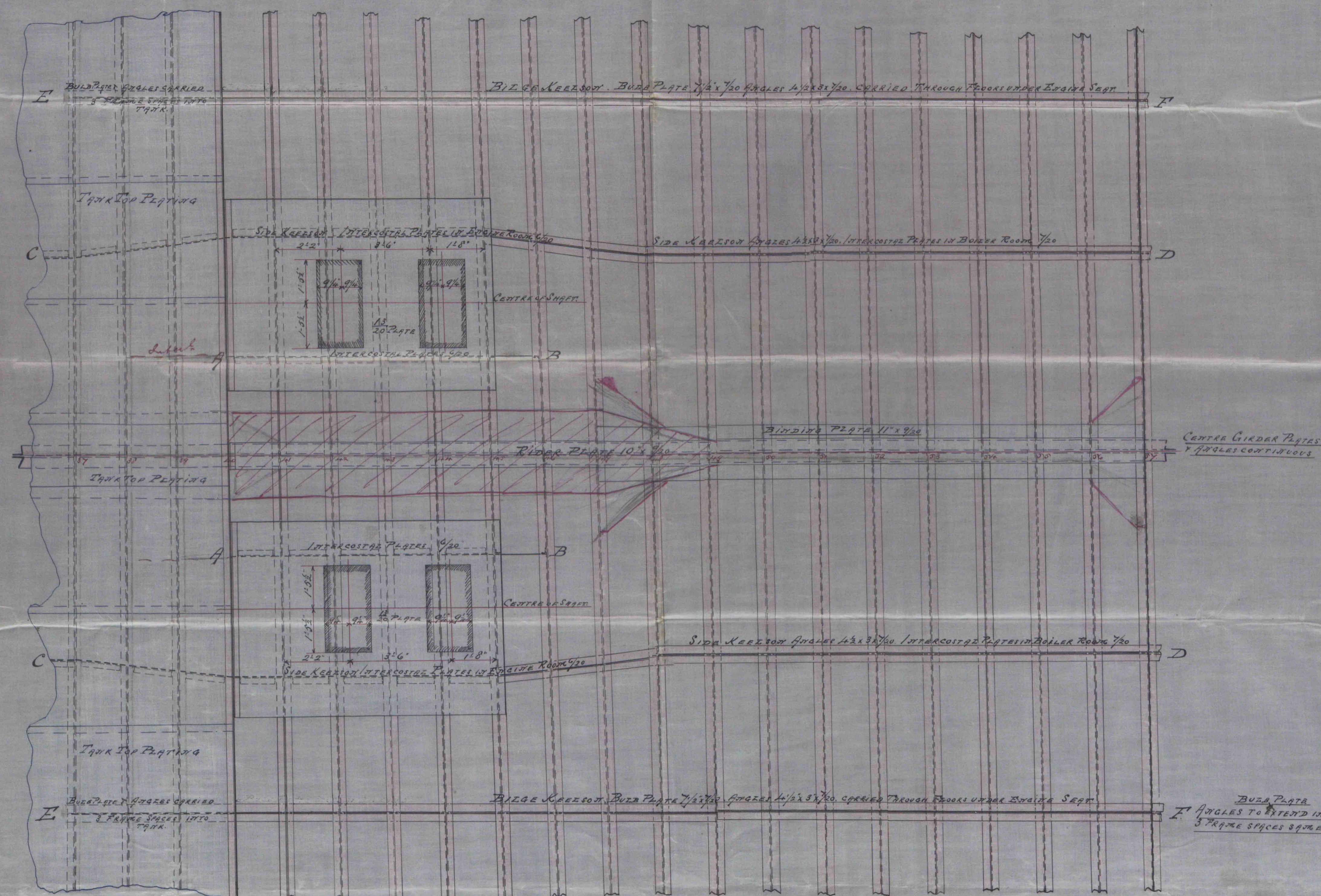
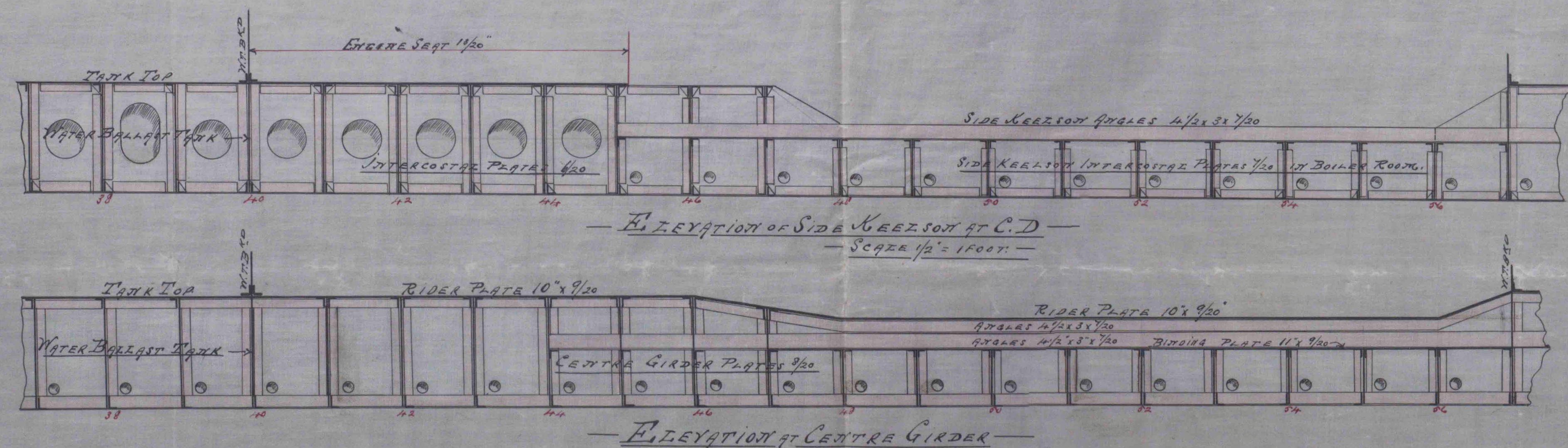
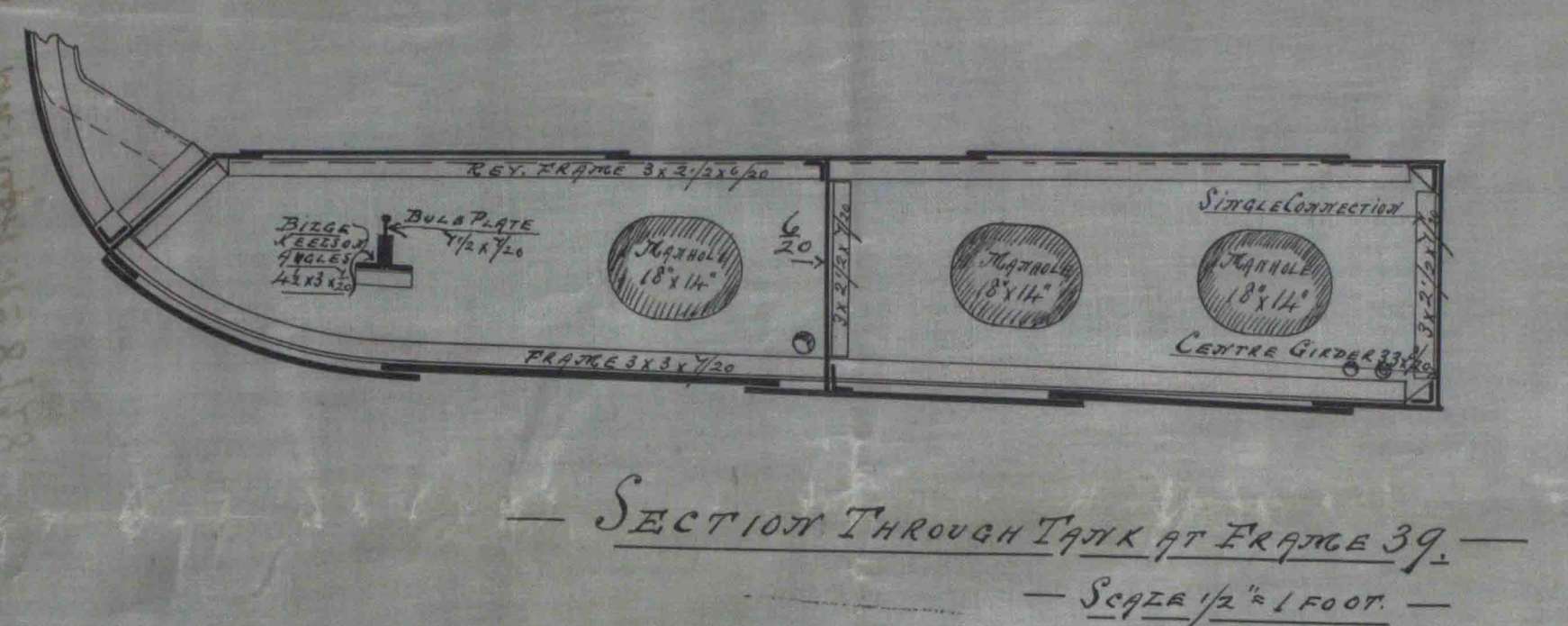
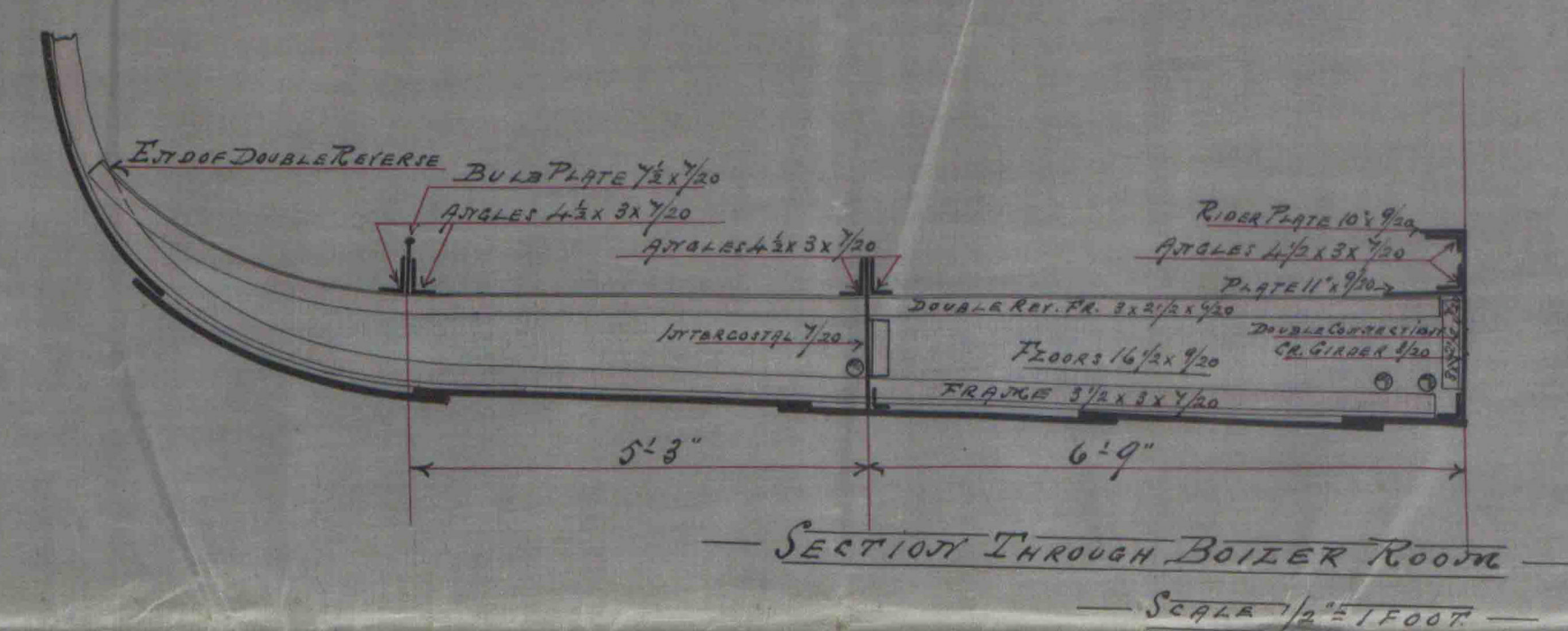
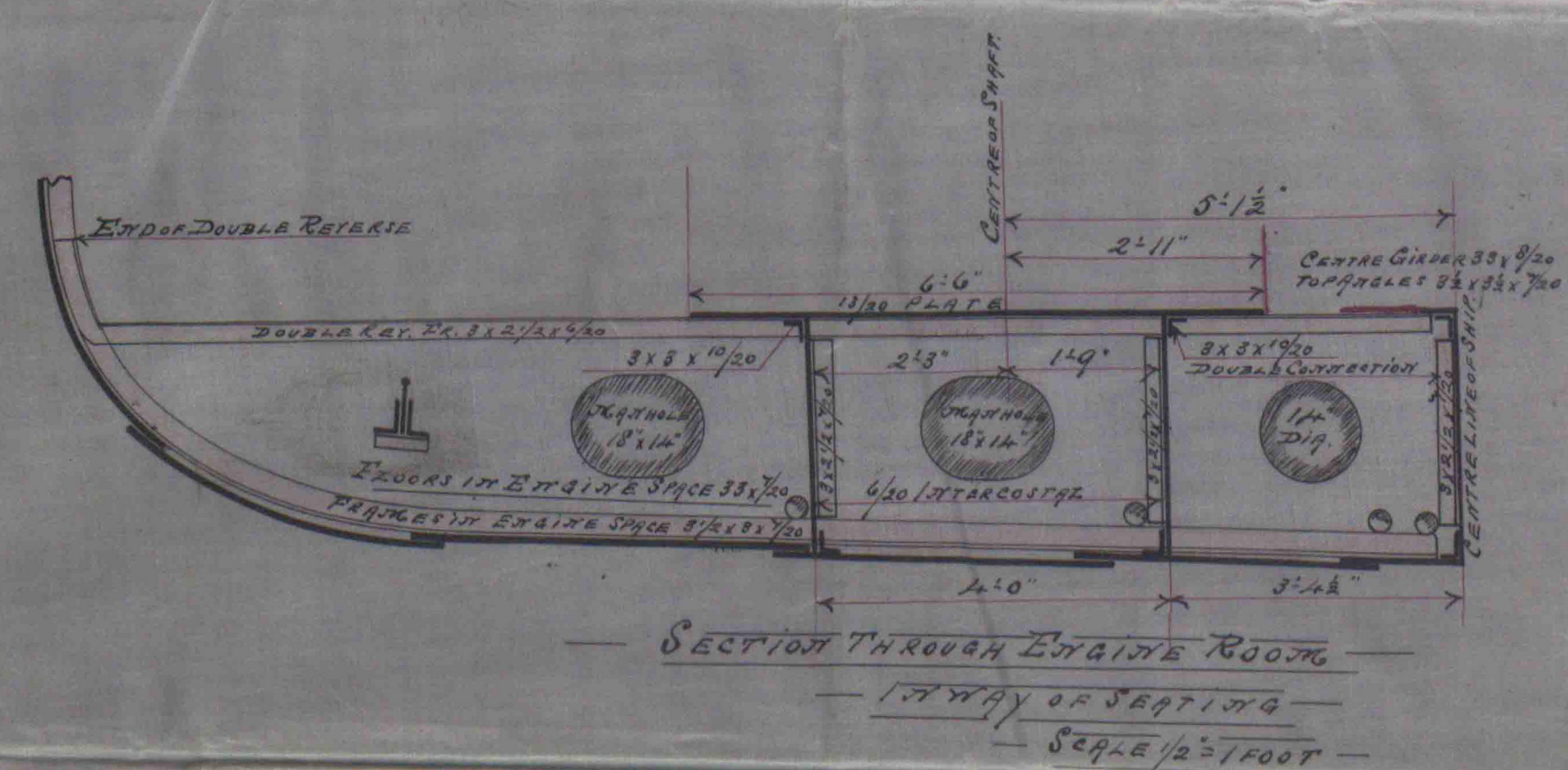
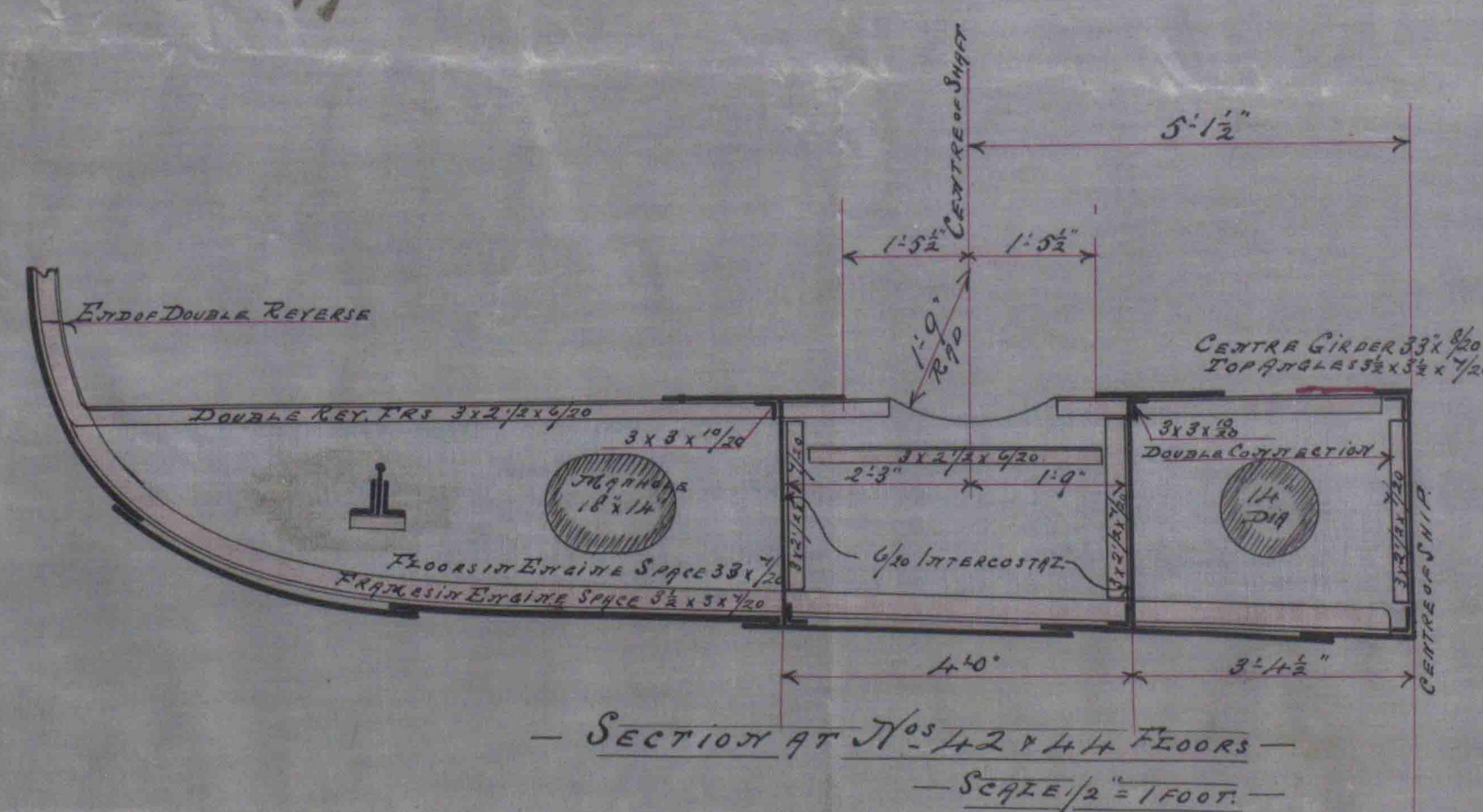


© 2019

Lloyd's Register  
Foundation



8. 10. 97



— THOMAS SCHEEN STEPHEN —  
— N<sup>o</sup> 157 — 'Natura' Lib. Rept. 8728.  
— PLATE OF ENGINE SECTIONS —  
— Scale 1/4" = 1 foot. —

8/10/97