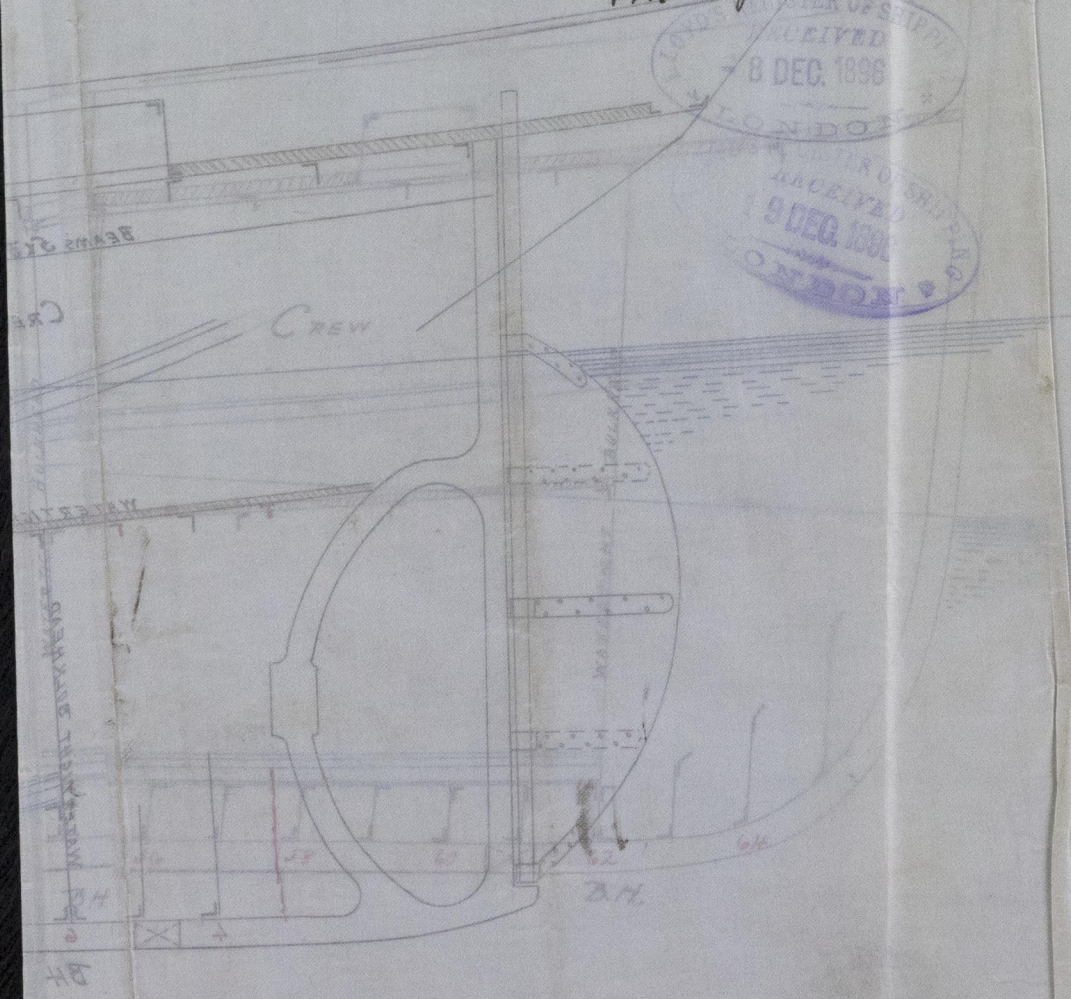
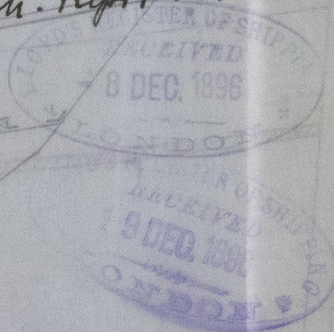


8-15-8

Hawthorn & Co. (Lim<sup>d</sup>)

S. S. 'Rouly Castle'

Lth. Rept. No 8394



© 2019

Lloyd's Register  
Foundation

LTH566-0144

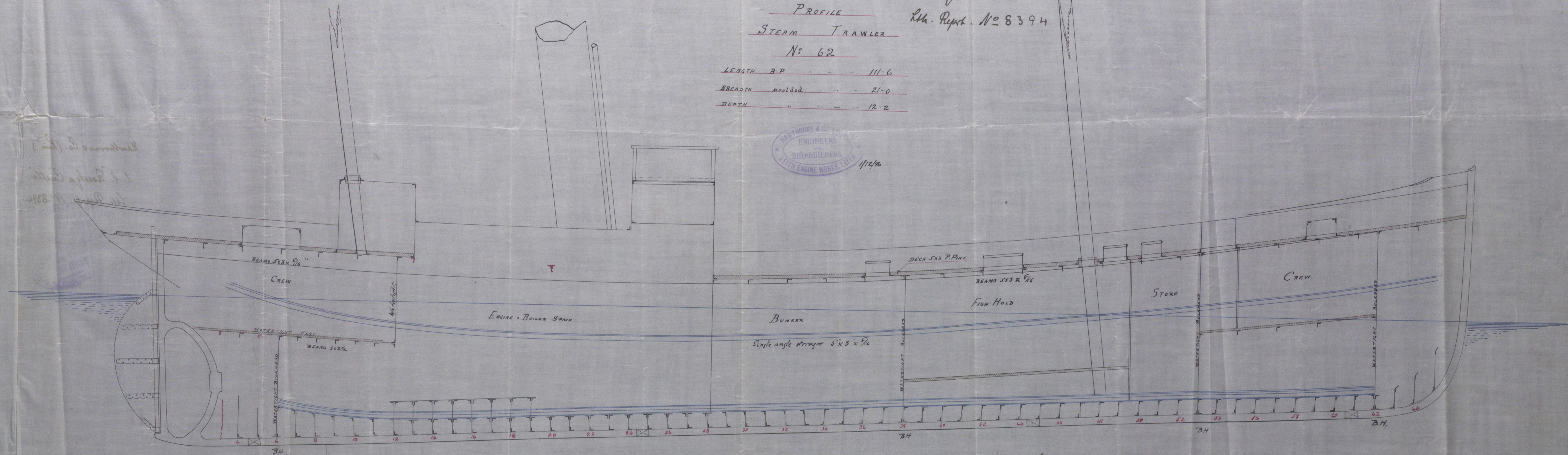
LTH566-0144





8.12.96

(Ind) Discontinued  
Hull of 'Rosalyn Castle'  
No 8394



PROFILE  
STEAM TRAWLER  
No 62

LENGTH B.P. - - - 111-6  
BREADTH moulded - - - 21-0  
DEPTH " - - - 12-2



'Rosalyn Castle'  
Lth. Rept. No 8394

147/2  
8/12/96

5th Decr 96  
H.T.