

Proposed Steam Fishing Vessels.

No 21, 22, and 23.

Length of Keel 88 ft 6 in

Length overall on deck 94 ft 6 in

Breadth moulded 18 ft 6 in

Depth 10 ft 8 in top of keel to top of Beam 27.10.96

Keel, American Elm 9 1/2 x 9 1/2

Stems and Knees British Oak, 9 in sided

Timbers and Space 1 ft 3 in

Timbers British Oak 5 in sided

Floors 11 in, Bilge 7 in, Top 5 in

Clamps 5 in sided 13 Oak

Keelson Pitch Pine 9 1/2 x 9 1/2

Planking Pitch Pine 2 1/2

Bilge and Belling Pitch Pine 3 1/2

Beam Clamps Pitch Pine 9 x 4

Celling Pitch Pine 1 1/2 in Bilge 2 1/2 in

Beams Pitch Pine or Oak 6 sided

Moulded 6 1/2 in ends 5 in {Space} 2 ft 6 in

Decks Pitch Pine 6 in x 2 3/8

Fastening Galvanized Iron

Planking Fastening Spikes & through Bolts 7/8

Trams 7/8

Iron Knees 4/6

Keel & Keelson 1 1/2

Stems, Keel Knees, and deadwood 1 1/2

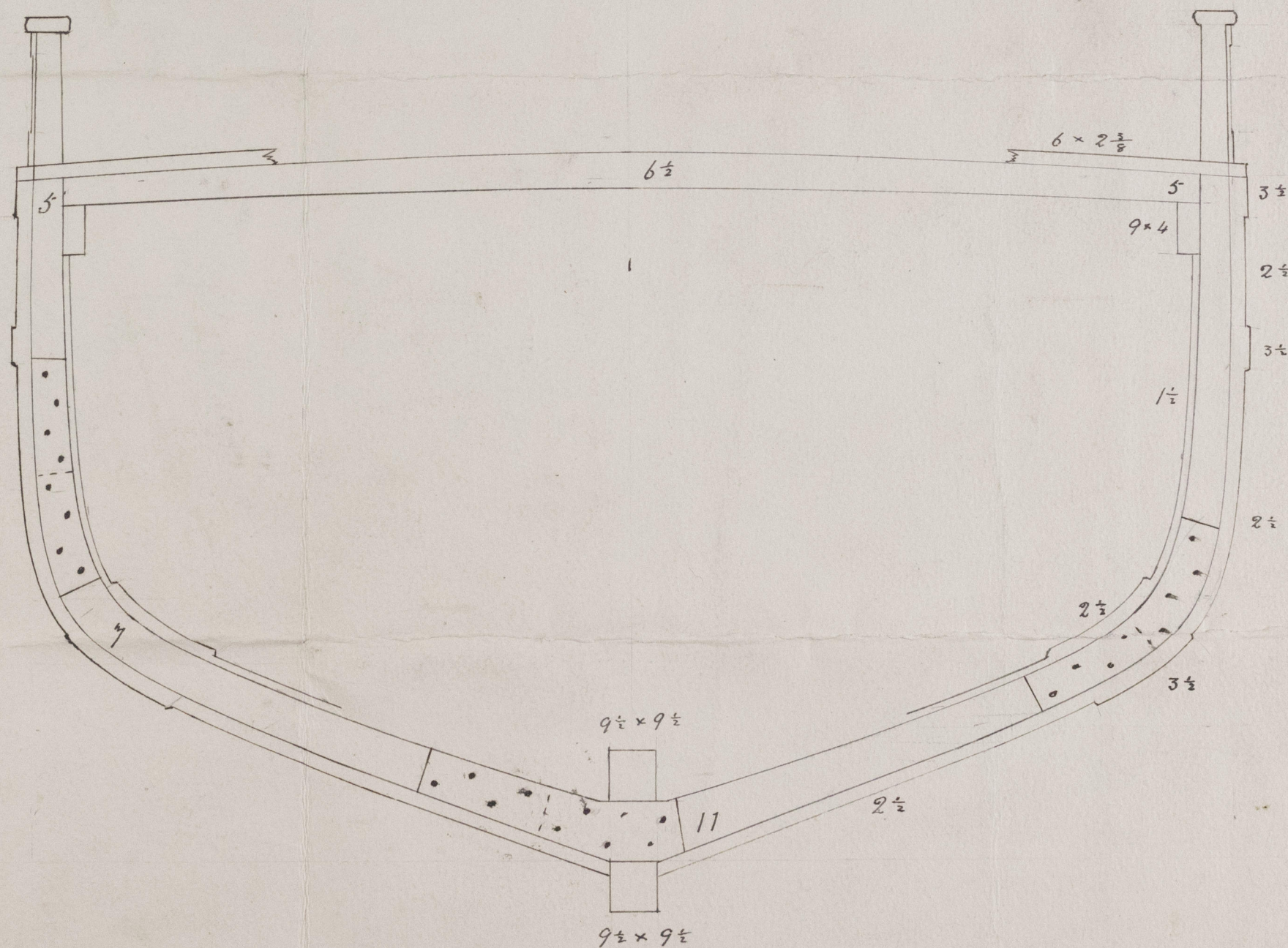
through Bolts at butts, and in every

3rd timber in each strack

Hanging Knees and Iron Beams
as Sister Vessel "White Cross"

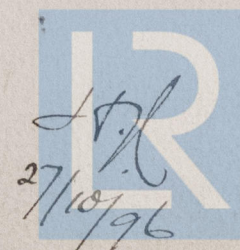


No 21 I. S. "Kilrenny" Lth. Rept. No 8381



From W. Jarvis

Ship Builder Anstruther Fife



© 2019

23rd Oct 96.

Lloyd's Register
Foundation

LTH506-0139

W. Jarvis' Nos 21. 22. & 23.

No 21 - S. S. "Kibenny"

Lth. Rept. No 8381



© 2019

Lloyd's Register
Foundation

LTH566-0139