

Hawthorns & Co
Boiler No 963
S.K. No 56
120 lbs

9th Rennie Castle

LTH566-0017



No 382
Hoyds List
240 lbs
J. H.
24-4-96



© 2019

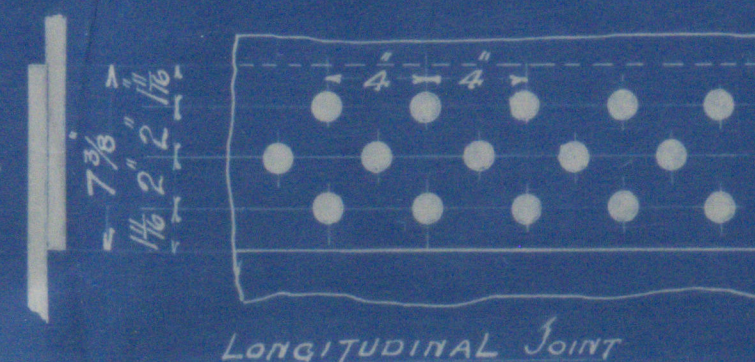
Lloyd's Register
Foundation

STEEL BOILER N^o 963 FOR S.S. N^o 56.
DUPLICATE OF BOILERS N^{os} 947 & 955.
WORKING PRESSURE 120 LBS PER SQUARE INCH.
SCALE 1/2" PER FOOT.

DUPLICATE OF BOILERS Nos 947 & 955.

WORKING PRESSURE 120 LBS. PER SQUARE INCH.

SCALE $1\frac{1}{2}$ " PER FOOT,



MS.
28-1-96