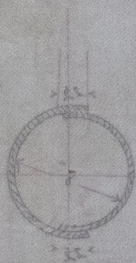
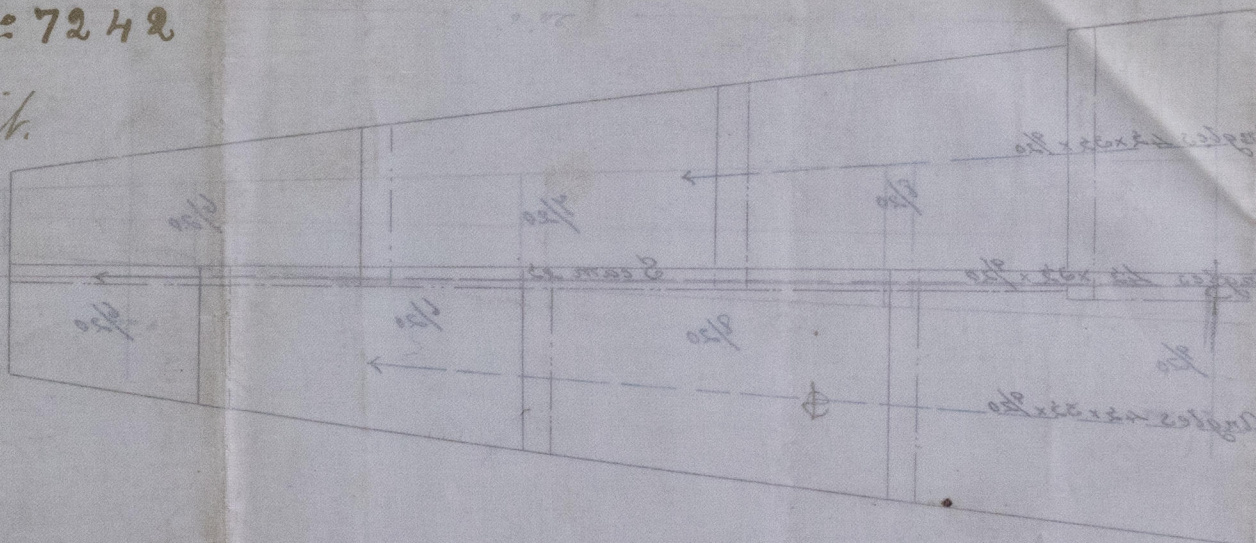


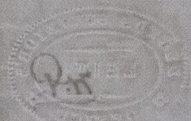
RA. "Royal North"
 Lth. Report. No 7242
Bowsprit.



Section through bow
1/2 scale



18" Long
 BUTTS OF PINES MARKED TO HAVE STAYS



11th Dec 1871

LTH 563-0098



© 2019

Lloyd's Register
 Foundation

14.10.92

Plan of Bowsprit for Barge No. 120

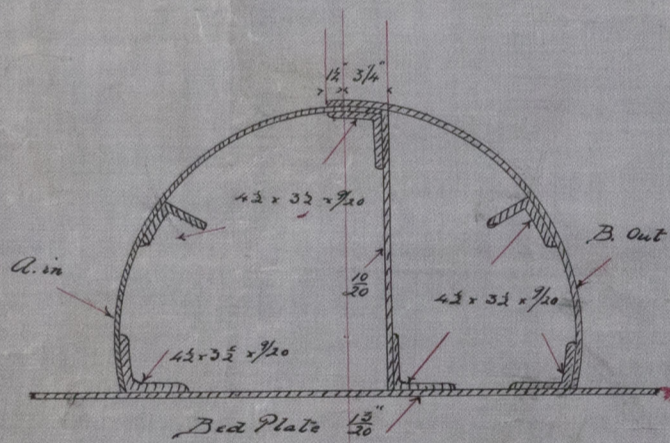
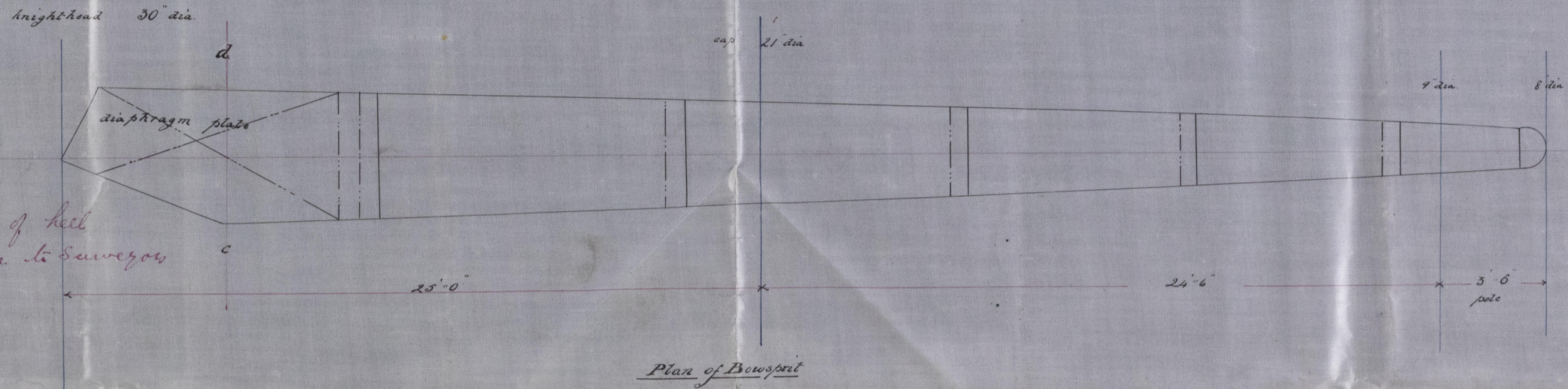
Bk. "Royal Fort"

Lth. Rept. No. 7242.

Scales $\frac{1}{2}$ in Breadth $\frac{1}{4}$ in length.

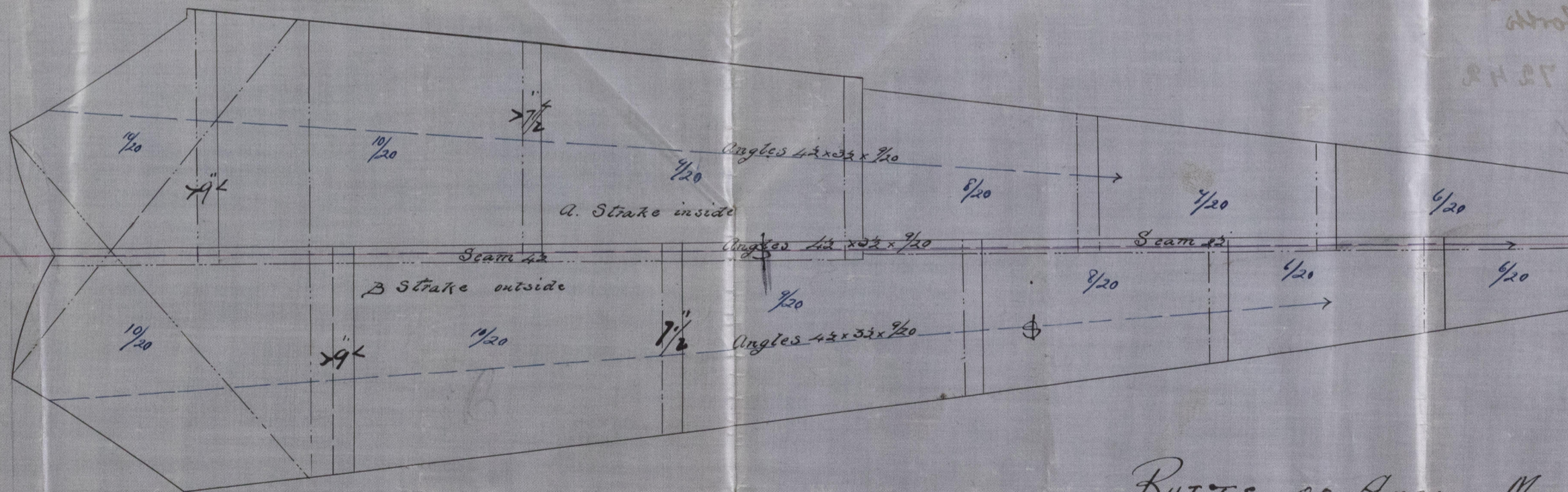
(Steel)

Strengthening in way of keel
and security of same to Surgeon's
satisfaction



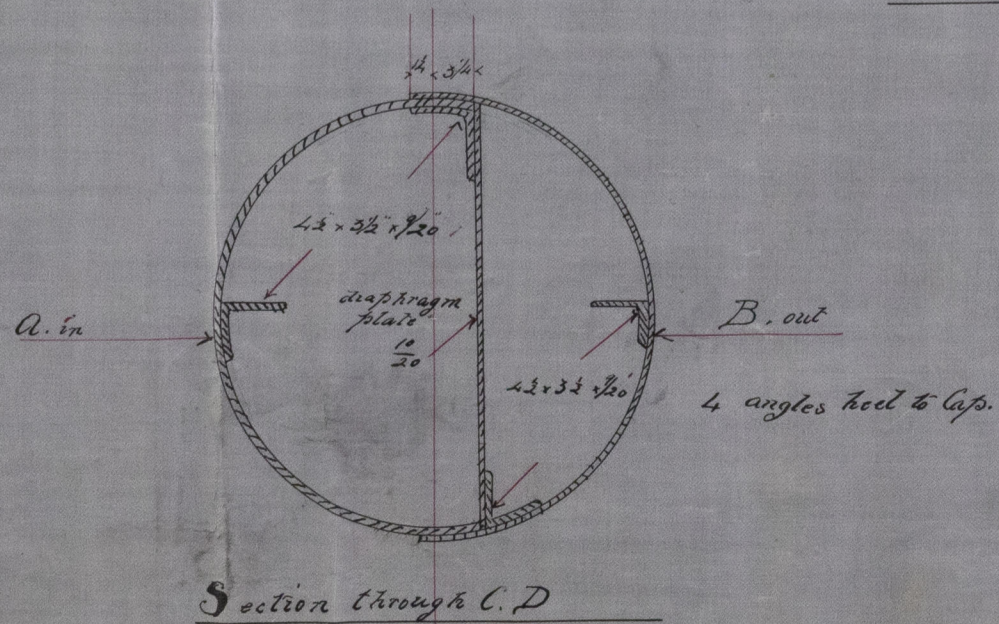
Section Through Knight head

Scale 1" = 1 foot



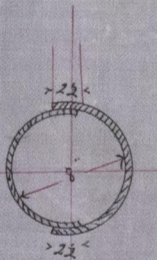
Expansion of Bowsprit

Butts to be



Section through C.D

"Whole length" of
Bowsprit to be
18' long



Section Through End

Scale

BUTTS OF ANGLES MARKED \$ TO HAVE STRIPS
18" LONG

LTH 563-0098

14/10/92