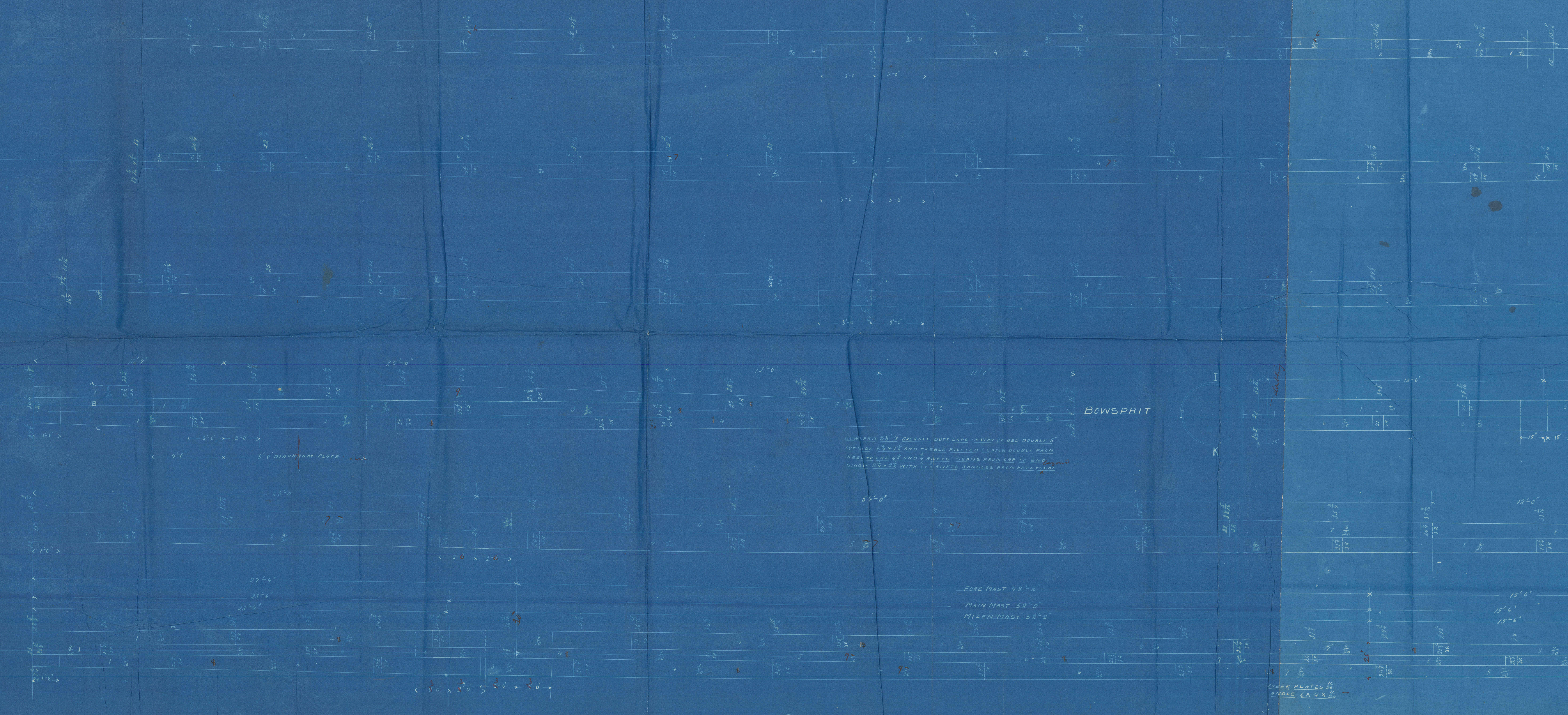
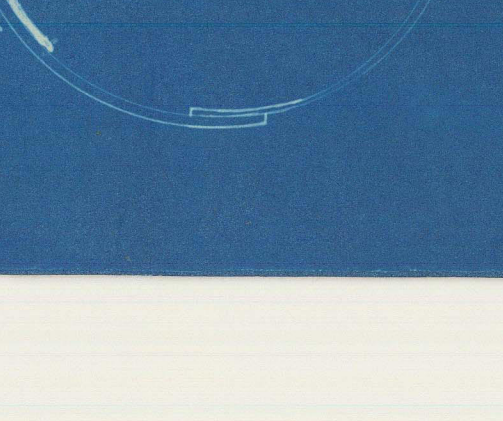
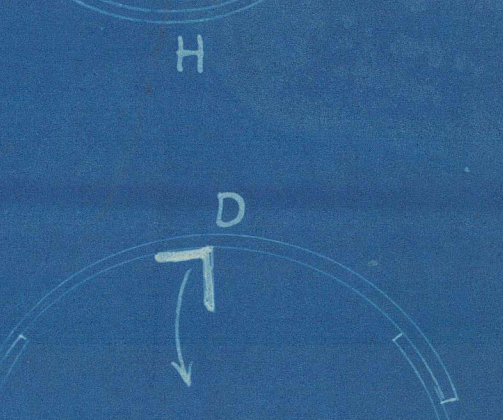
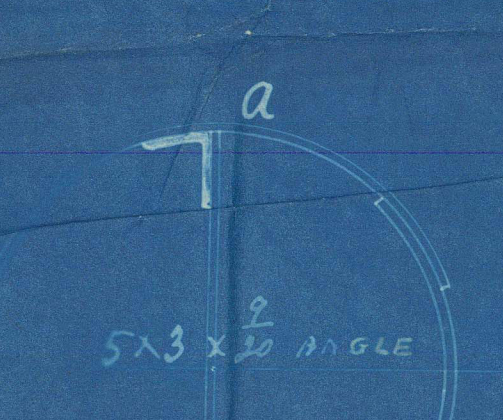
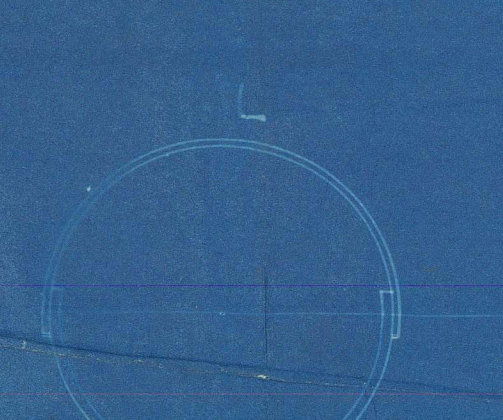
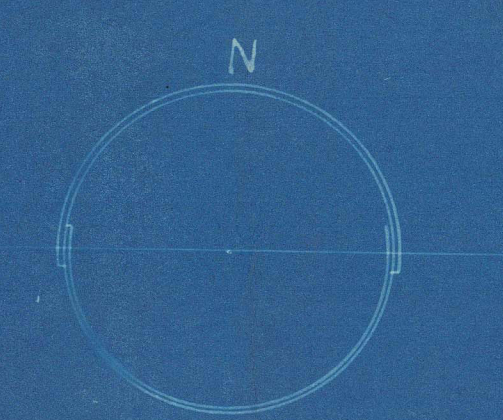
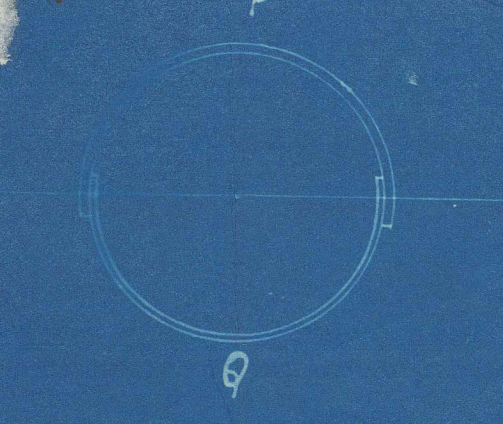


10.3.92



FORE MAIN MIZEN UPPER TOPSAIL YARDS 74'-0" CLEATED
71'-0" OVER STEEL BUTTS LAPPED 6'-0" AND TIEBARS RIVETED
SEAMS SINGLE RIVETED 2 1/2" SPACES WITH 1-1/2" RIVETS

FORE MAIN MIZEN LOWER TOPSAIL YARDS 32'-0" CLEATED
13'-0" OVER STEEL BUTTS LAPPED 6'-0" TIEBARS RIVETED
SEAMS SINGLE RIVETED 2 1/2" SPACES WITH 1-1/2" RIVETS

FORE MAIN MIZEN LOWER YARDS 52'-0" CLEATED
9'-0" OVER STEEL BUTTS LAPPED 6'-0" TIEBARS RIVETED
SEAMS SINGLE RIVETED 2 1/2" SPACES WITH 1-1/2" RIVETS

FORE MAIN MIZEN TOPMASTS 60'-0"
BUTTS LAPPED 6'-0" AND TIEBARS RIVETED
SEAMS SINGLE RIVETED 2 1/2" SPACES WITH 1-1/2" RIVETS

FORE MAIN MIZEN LOWER MASTS 91'-0"
BUTTS LAPPED 6'-0" AND DOUBLE RIVETED
SEAMS 7'-0" TIEBARS RIVETED SEAMS
DOUBLE 2 1/2" WITH 1-1/2" RIVETS WITH 1-1/2" RIVETS
WHOLE LENGTH

Butts of Masts & Bowsprit are shown in plan.

"Alcides" L.M. Rep 7039

-NO 164- MASTS AND YARDS-

SCALE 1/4" = 1 FOOT

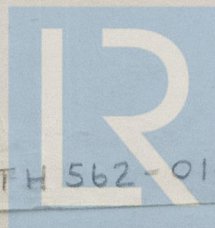
197/12

FORE MAIN MIZEN TOPMASTS 60'-0"
BUTTS LAPPED 6'-0" AND TIEBARS RIVETED
SEAMS SINGLE RIVETED 2 1/2" SPACES WITH 1-1/2" RIVETS

FORE MAIN MIZEN LOWER MASTS 91'-0"
BUTTS LAPPED 6'-0" AND DOUBLE RIVETED
SEAMS 7'-0" TIEBARS RIVETED SEAMS
DOUBLE 2 1/2" WITH 1-1/2" RIVETS WITH 1-1/2" RIVETS
WHOLE LENGTH

VIGOR MAST
Note: - The Vigor Mast is shown as one
not fitted in one length, a separate
topmast being fitted, as shown on separate
Sketch. — 1/12

164 Shachtch



© 2021

Lloyd's Register
Foundation

LTH 562-0162

BA. "Alcides"

Lth. Report. 7039

h 91

LTH 562-0162



© 2021
Lloyd's Register
Foundation