



Steam Trawler No. 78

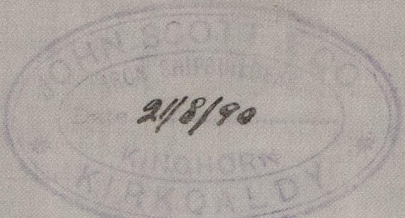
"Faith"

100'-0" x 20'-4" x 11'-1" moulded

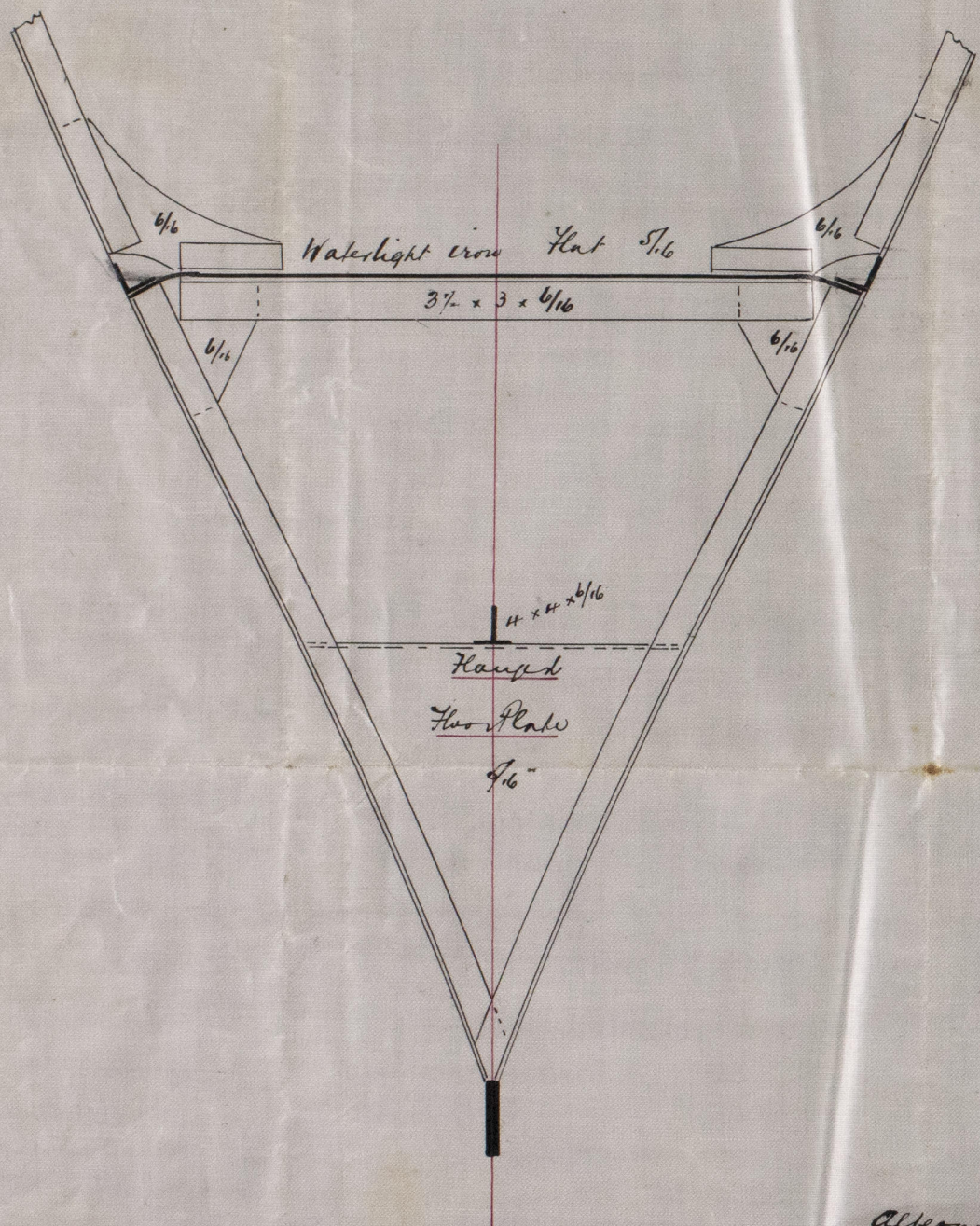
Scale 3/4" = 1 foot.

To be built of steel and to class

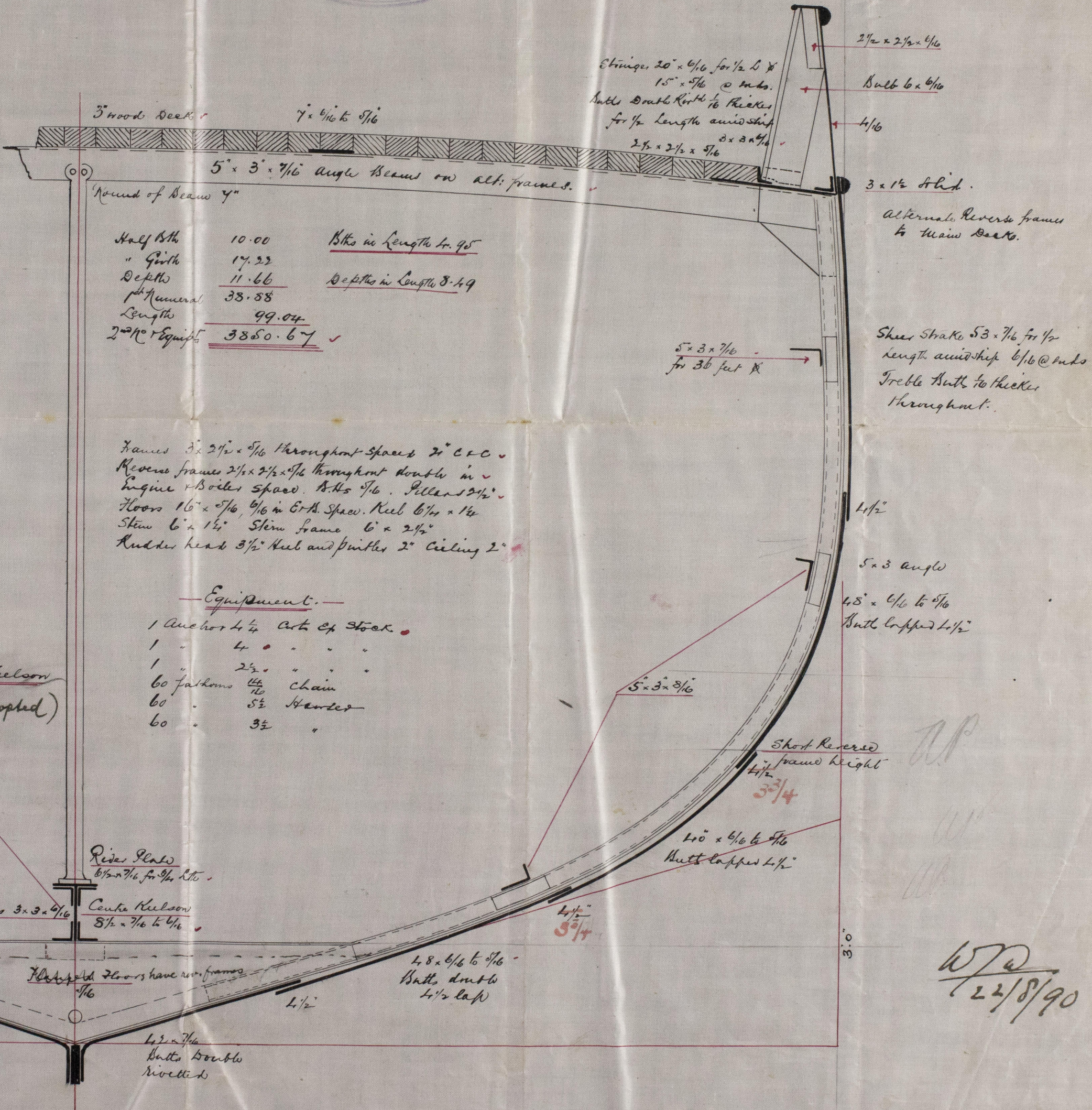
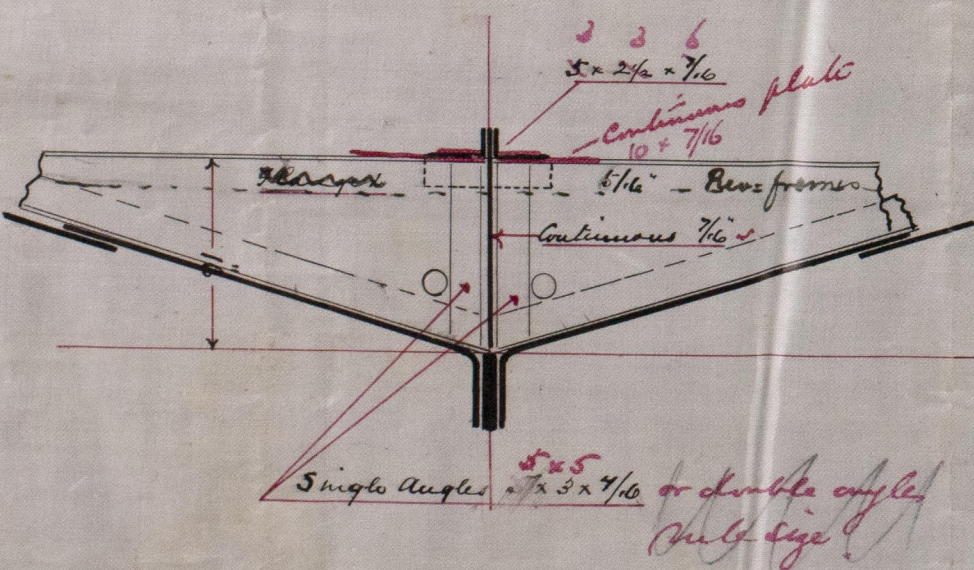
100 A for Trawling Purposes.



Section showing proposed  
method of fitting trawl Ballast.



Section under Boilers.



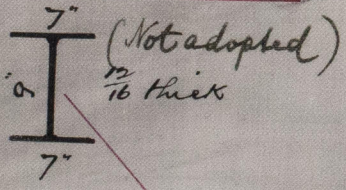
Half Bk	10.00	Bkts in Length 4.95
" Girth	17.22	
Depth	11.66	Depth in Length 8.49
1st Number	38.38	
Length	99.04	
2nd Equip	3850.67	

Frames 3 x 2 1/2 x 5/16 throughout spaces 2' c/c.  
Reverse frames 2 1/2 x 2 1/2 x 5/16 throughout double in  
engine & boiler space. Bkts 5/16. Pillars 2 1/2 x 5/16.  
Floors 16 x 5/16, 6/16 in E.H. Space. Keel 6 1/2 x 1 1/2.  
Stem 6 x 1 1/2. Stern frame 6 x 2 1/2.  
Rudder head 3 1/2 x 1 1/2 and pintles 2" Ceiling 2"

Equipment.

- 1 Anchor 4 1/4 cwt. Ex Stock.
- 1 " 4 " " " "
- 1 " 2 1/2 " " " " "
- 60 fathoms 1 1/2 chain
- 60 " 5/8 Hauler
- 60 " 3/4 " " " "

Alternative Center Keelson



Riser Plate  
6 1/2 x 7/16 for 1/2 ltr.  
Center Keelson  
8 1/2 x 7/16 to 6/16

J.P.  
26/8/90

W.P.  
22/8/90



Lth. Rept. No 6714

© 2019

Lloyd's Register  
Foundation