

Dec 13/12/88

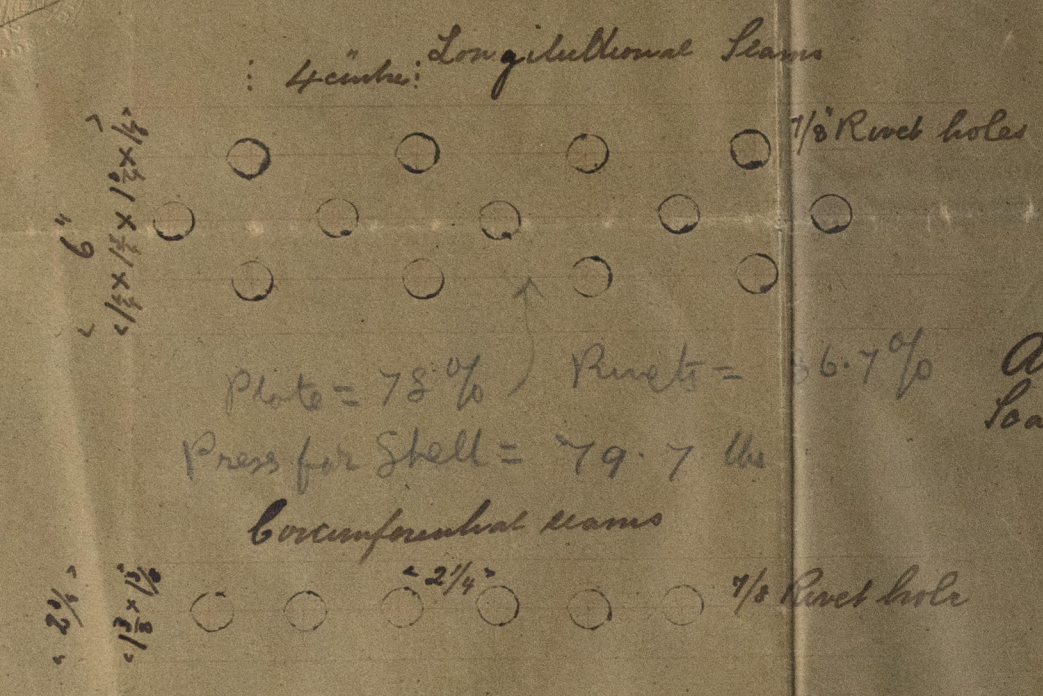
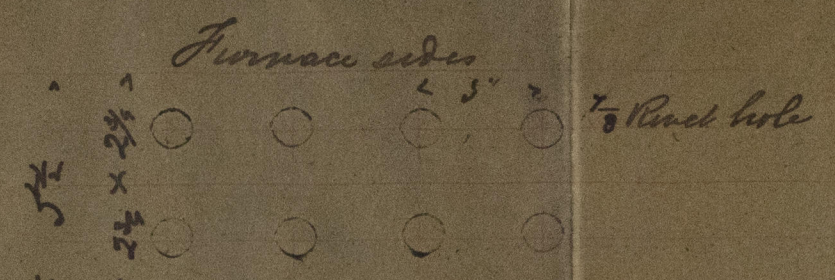
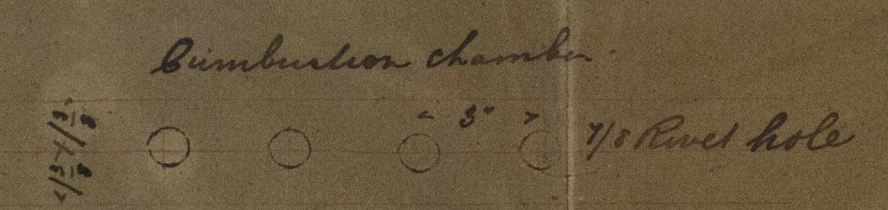


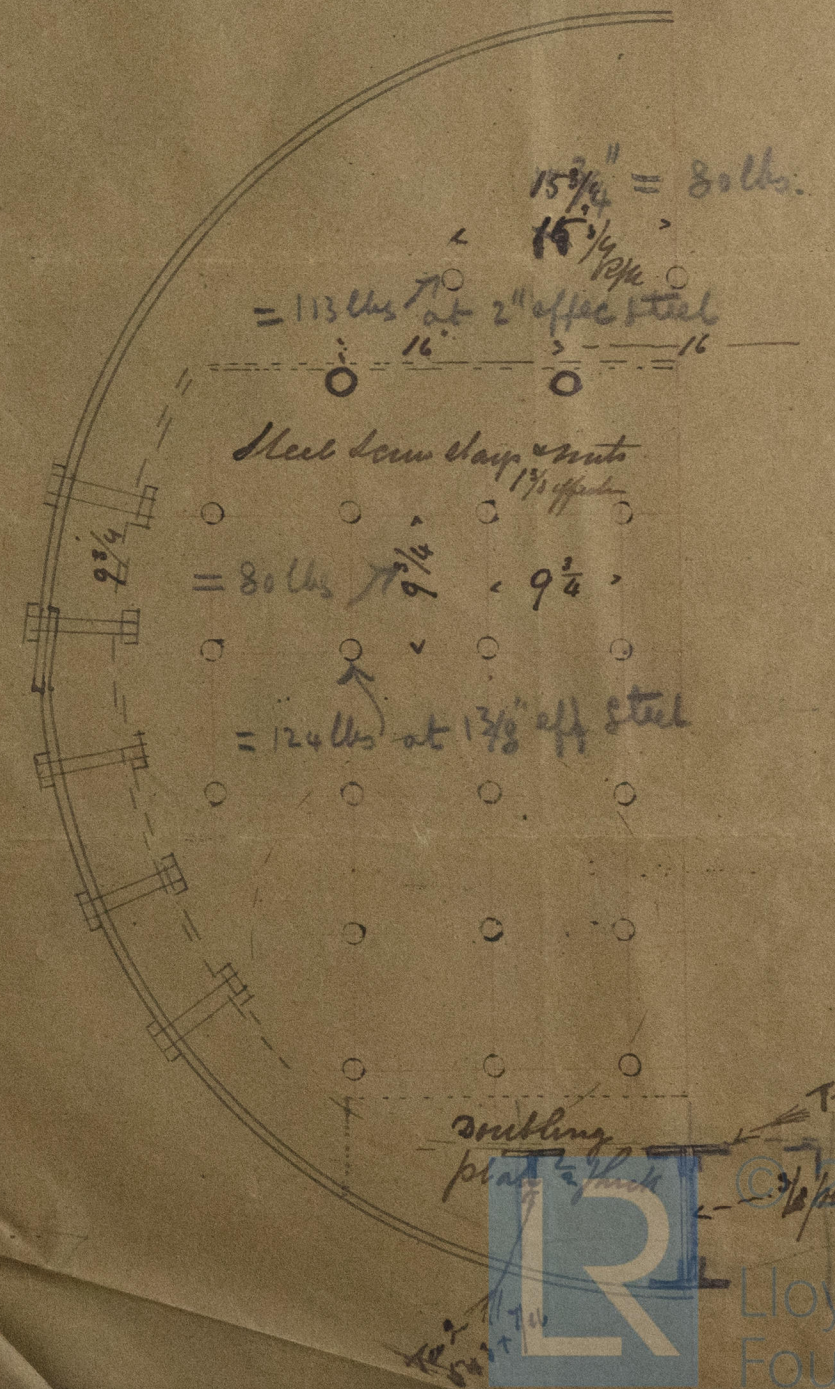
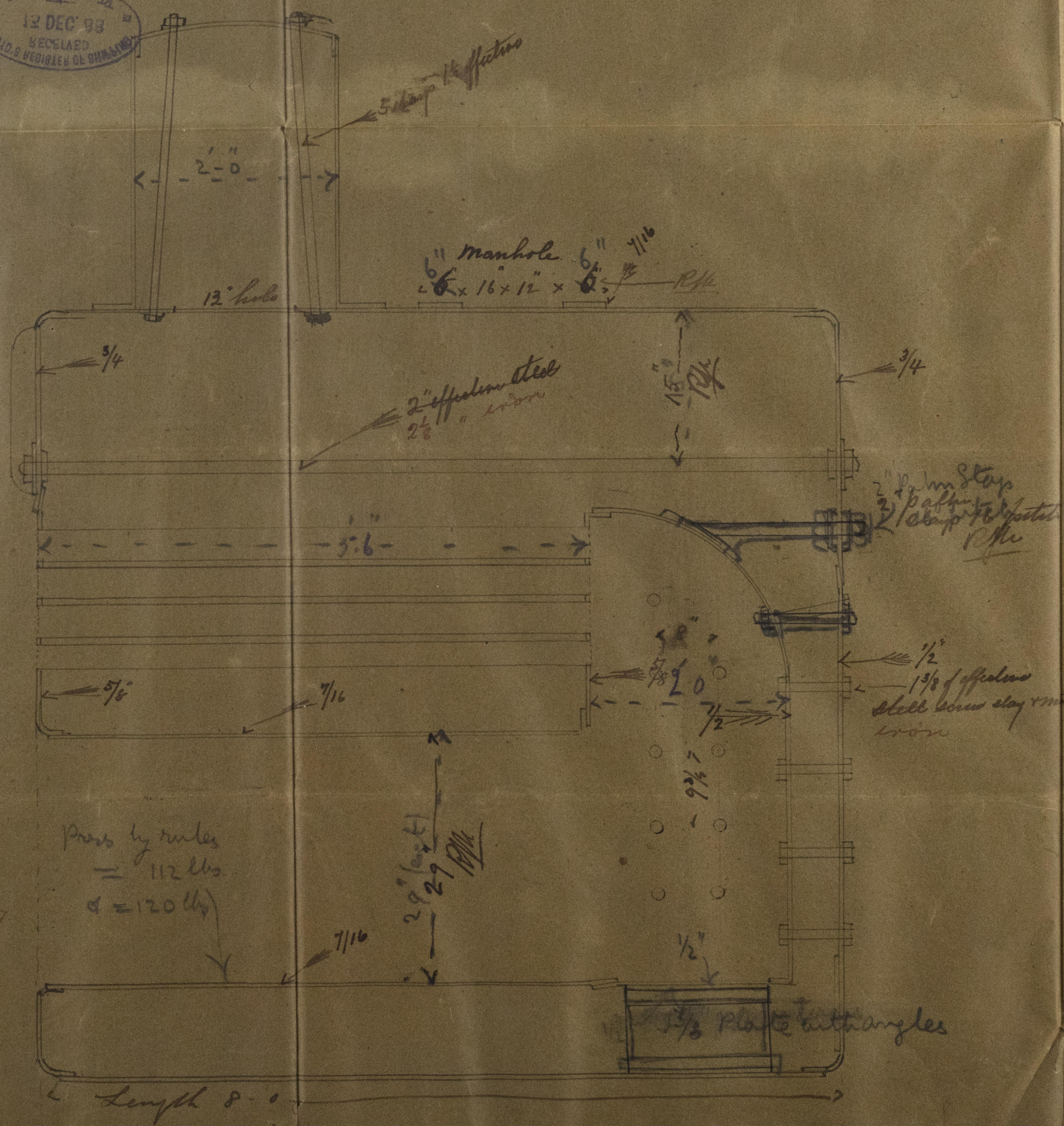
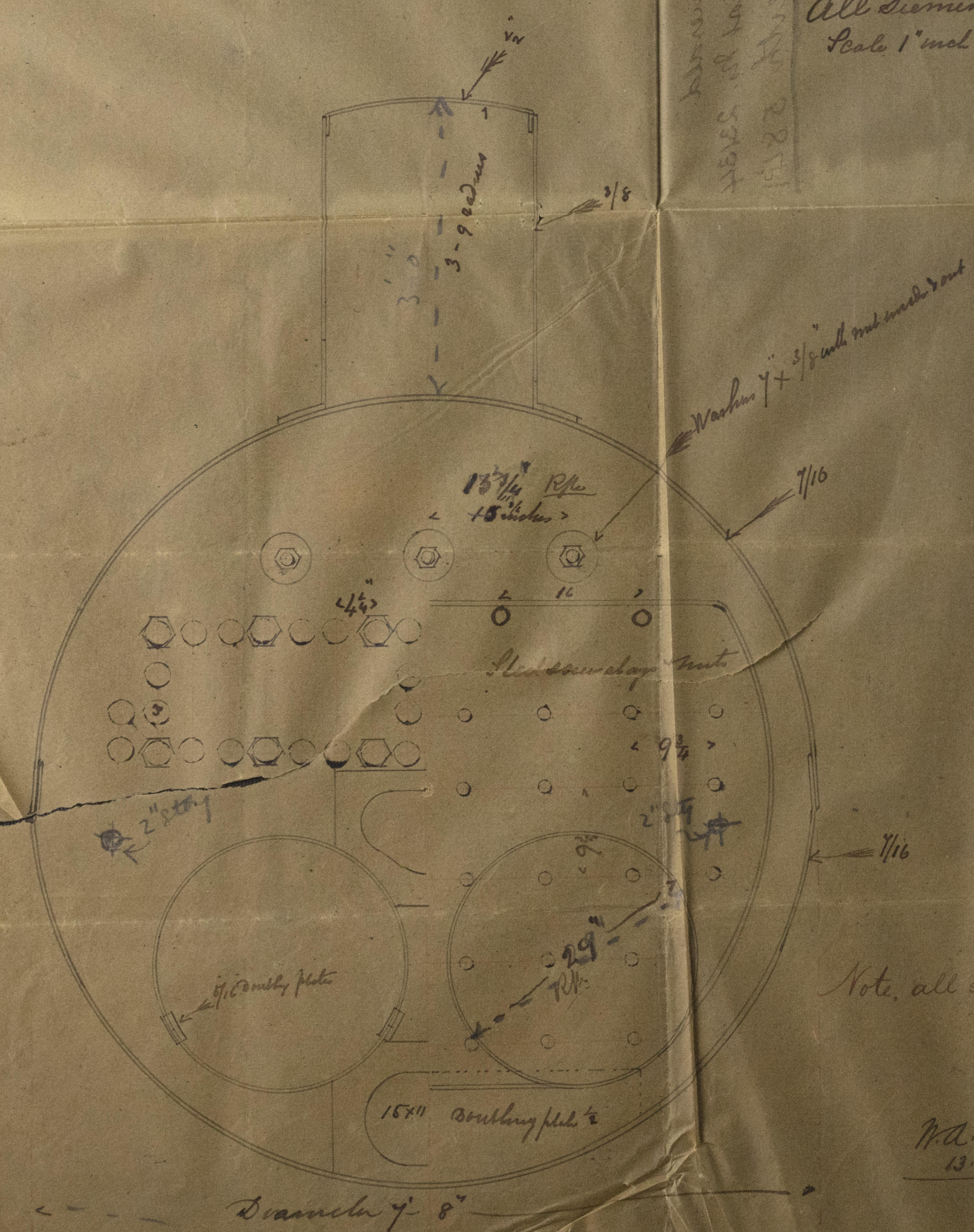
Plate = 78%  
Rivets = 6.7%  
Press for steel = 79.7 lbs  
Conformal seams

All steel Rivets  
Scale 3 inch = 1 foot



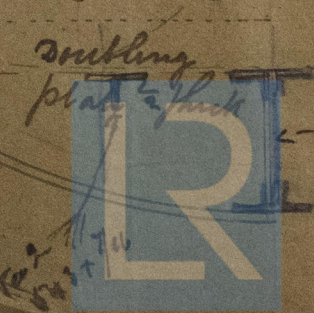
For vessel building by Messrs. Brown Brothers, Leith.  
No. 25 Emerald

R. J. MARSHALL  
TYNE BOILER BUILDING WORKS  
SOUTH SHIELDS  
80 lbs Working pressure  
All Siemens Martin steel  
Scale 1 inch = 1 foot



Note: all sharp of iron.

M.A.  
13.12.88



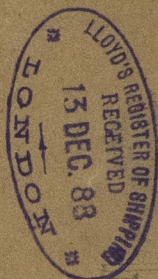
Lloyd's Register Foundation



S.S. "Emerald"  
 Twe. Report No. 23134  
Leith 5841

80 1/2 inches = 1 ft  
 80 1/2 inches = 1 ft  
 80 1/2 inches = 1 ft

SOLE AGENTS  
 LIME BROTHERS & CO. LTD.  
 10, MARK LANE, LONDON, E.C. 3



© 2019  
 Lloyd's Register  
 Foundation

0 3 1/2

0 3 1/2

0 3 1/2

0 3 1/2

0 3 1/2

0 3 1/2

LT4 55B-0219