

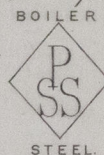
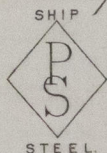
Mill Department.  
London Office.  
11 Queen Victoria St.  
E.C.

Parkhead Iron & Steel  
Forge & Rolling Mills.  
Glasgow. 24<sup>th</sup> April 1886

Messrs P. & H. Macfellan.

(2) Bought of J. & W. Beardmore.

Manufacturers of Steel Plates & Bars, (Siemens Process) & Iron Plates & Bars for  
Ships, Boilers, &c. & Marine Engine Forgings of all descriptions.  
Iron & Steel Plates flanged for Boiler Fronts &c.



P.R. 10 R.	36	Steel Bar	2 1/8 Round	+ 11. 0	2 3 2.
	4		2 "	" "	. 4 1.
	8		" "	" 6. 3	. 4 3 12
	8		1 1/4 "	" 7. 6	. 4 2.
	12		1 3/8 "	" 15. 0	. 8 1 12
	30		1 1/4 "	" "	. 17 1 16
98		Per rail to North Leith, on			4 2 3 12
		Trucks No. 1663, for Messrs Ramage & Ferguson			

(2/40)

Originals guaranteed R.M.  
(Cin 545)

LTH557-0292



© 2019

Lloyd's Register  
Foundation