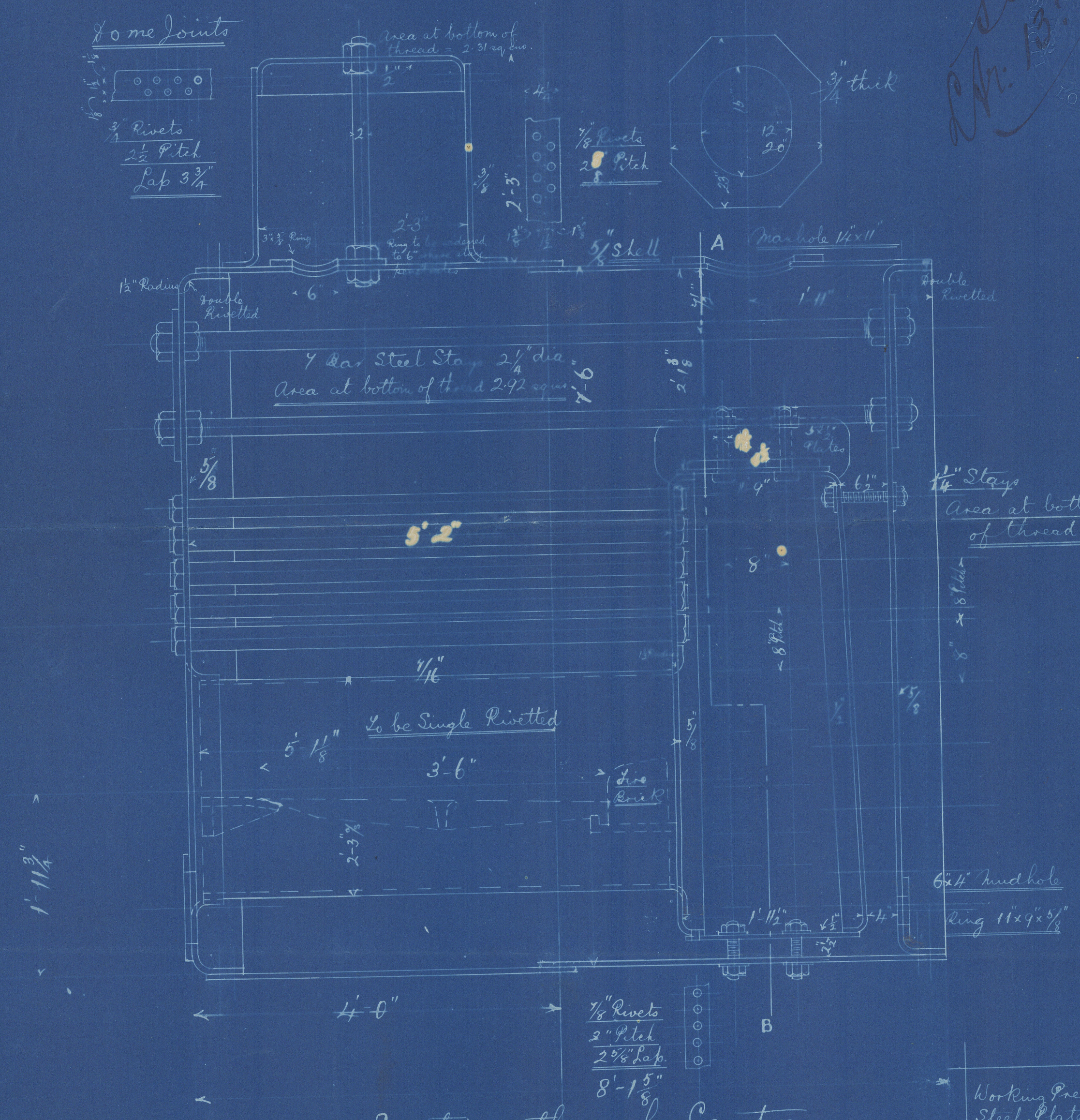
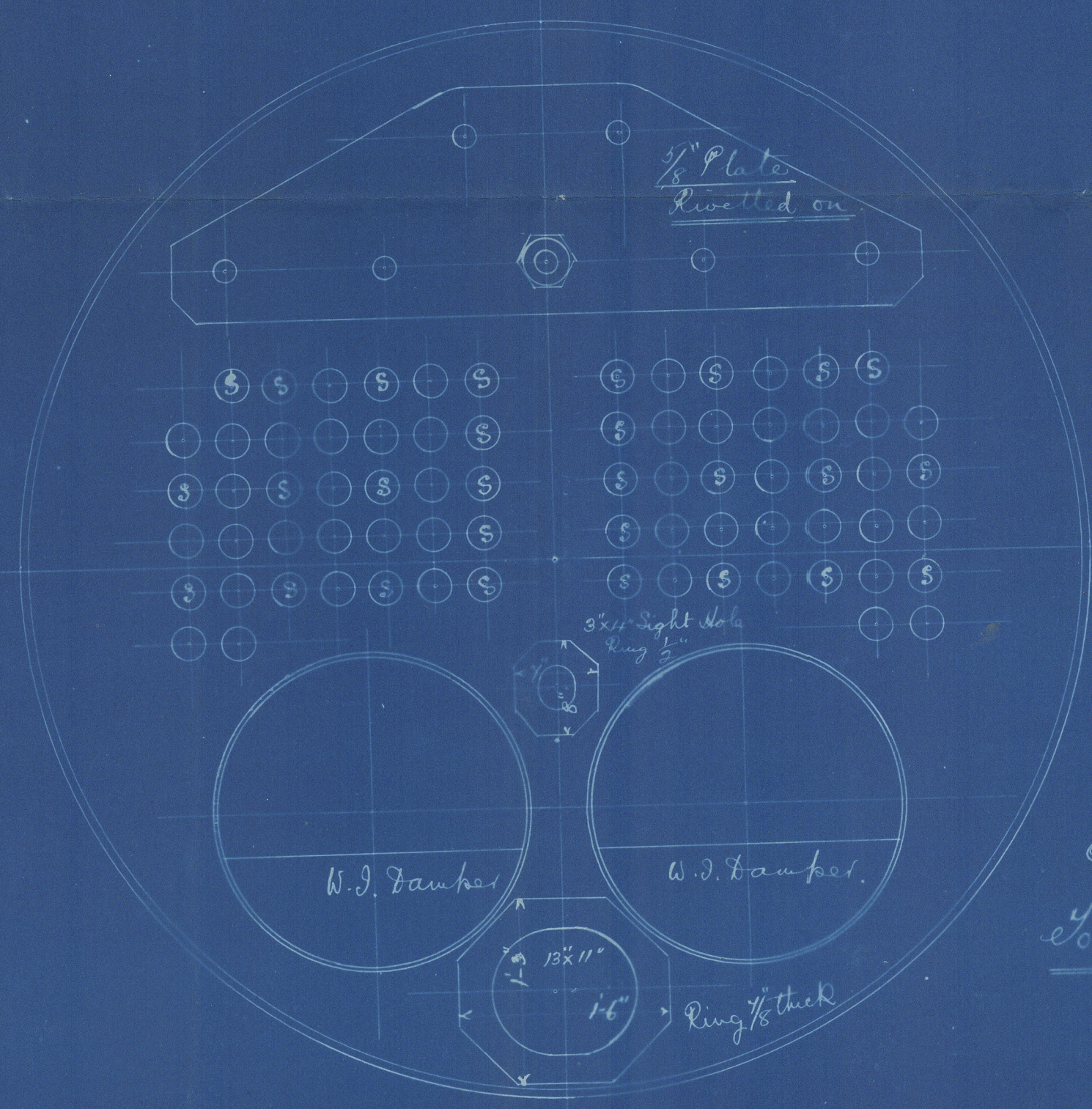


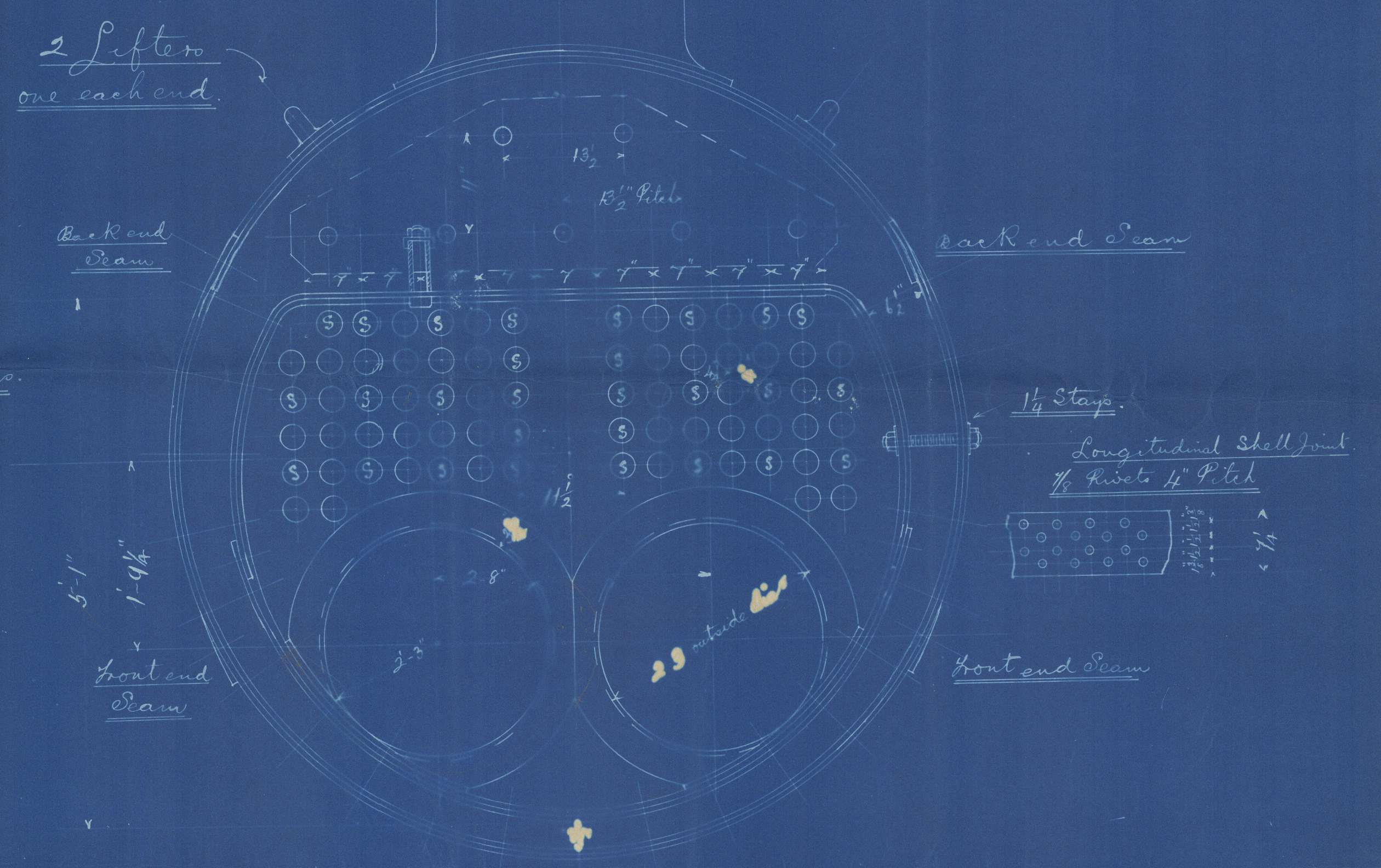
See Mr. B. 11:96



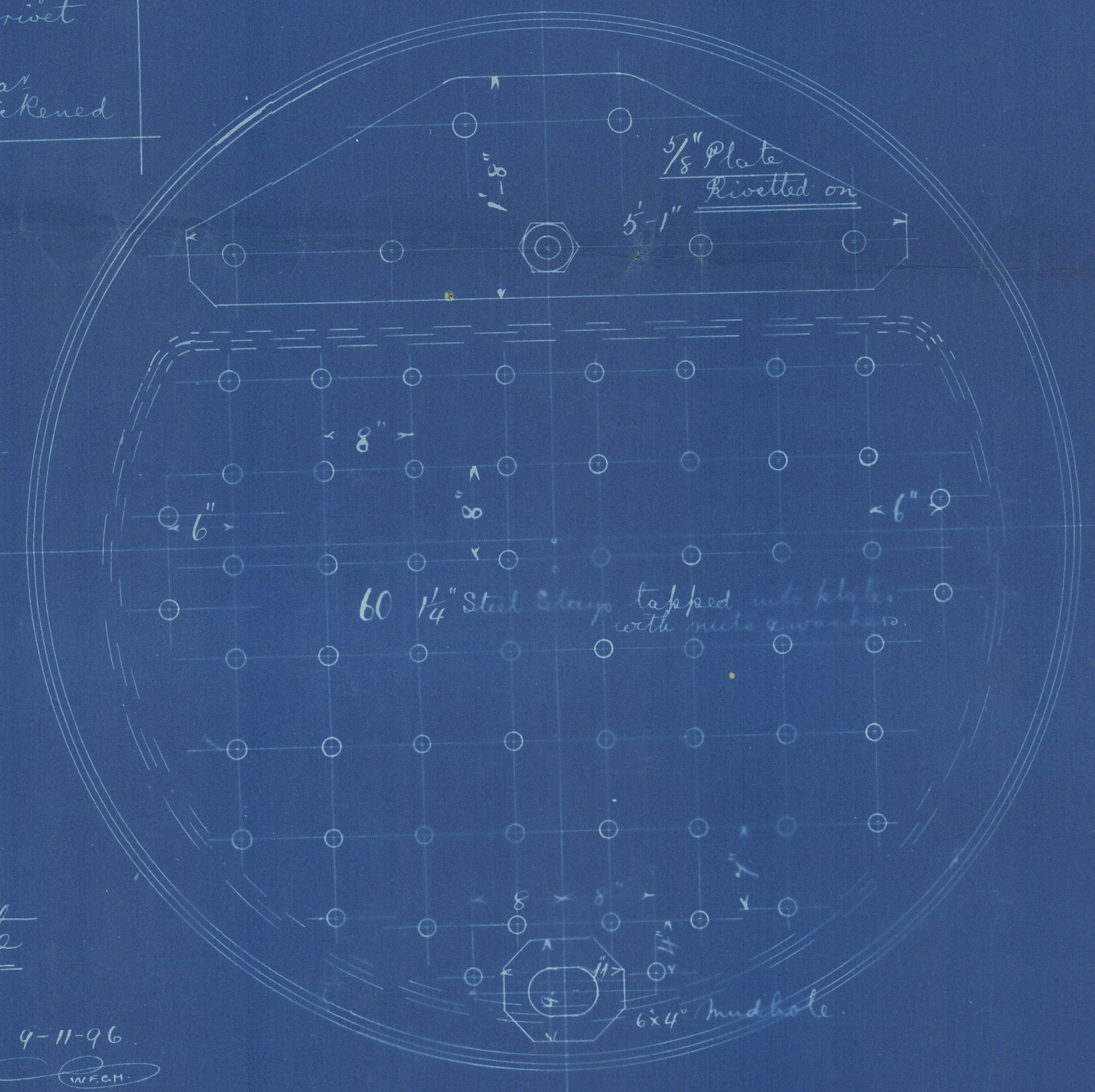
Section through Centre



Front End.



Section on Line A.B.



Back End.

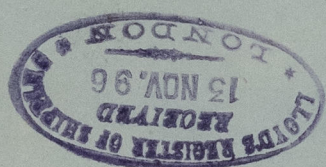
Working Pressure 120 lbs. Tested to 240 lbs.
 Steel Plates 28 tons tensile strength
 Steel Rivets Holes drilled in position 1/16 larger in dia. than rivet
 44 Tubes belled 1/8" smokebox end
 28 Stay tubes 1/4" thick 3" outside dia. ends thickened

Marine Boiler
 for "S/S. Emerald"
 Scale 1" = 1 foot.
 to Lloyd's Rules & Certificate

4-11-96
 W.P.C.M.

4-11-96
 13.11.96

Amended Plan.



LON 731-0026

Boiler Plan. W.S. S. Trlb.

Emerald

London. 58606.



© 2021

Lloyd's Register
Foundation