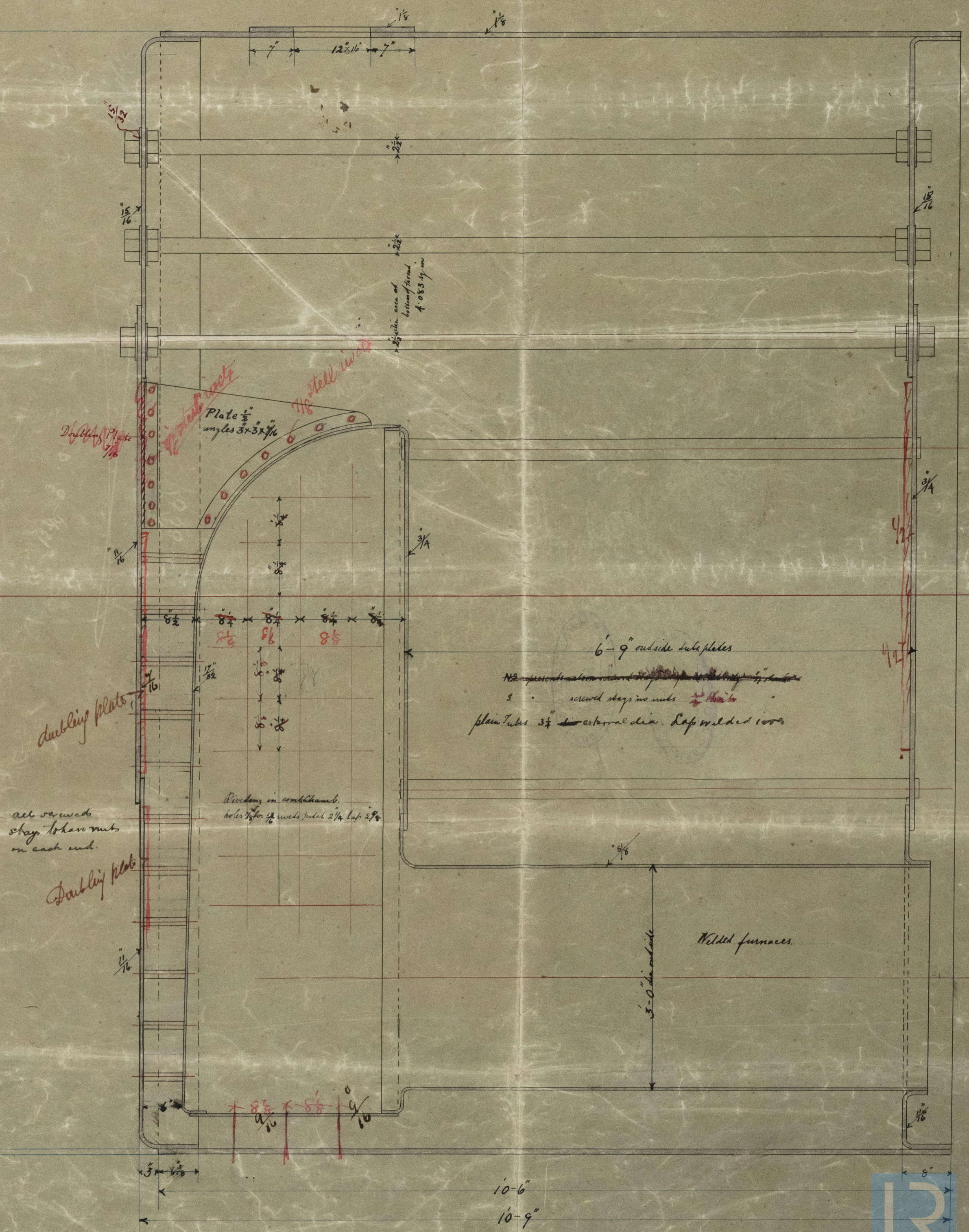
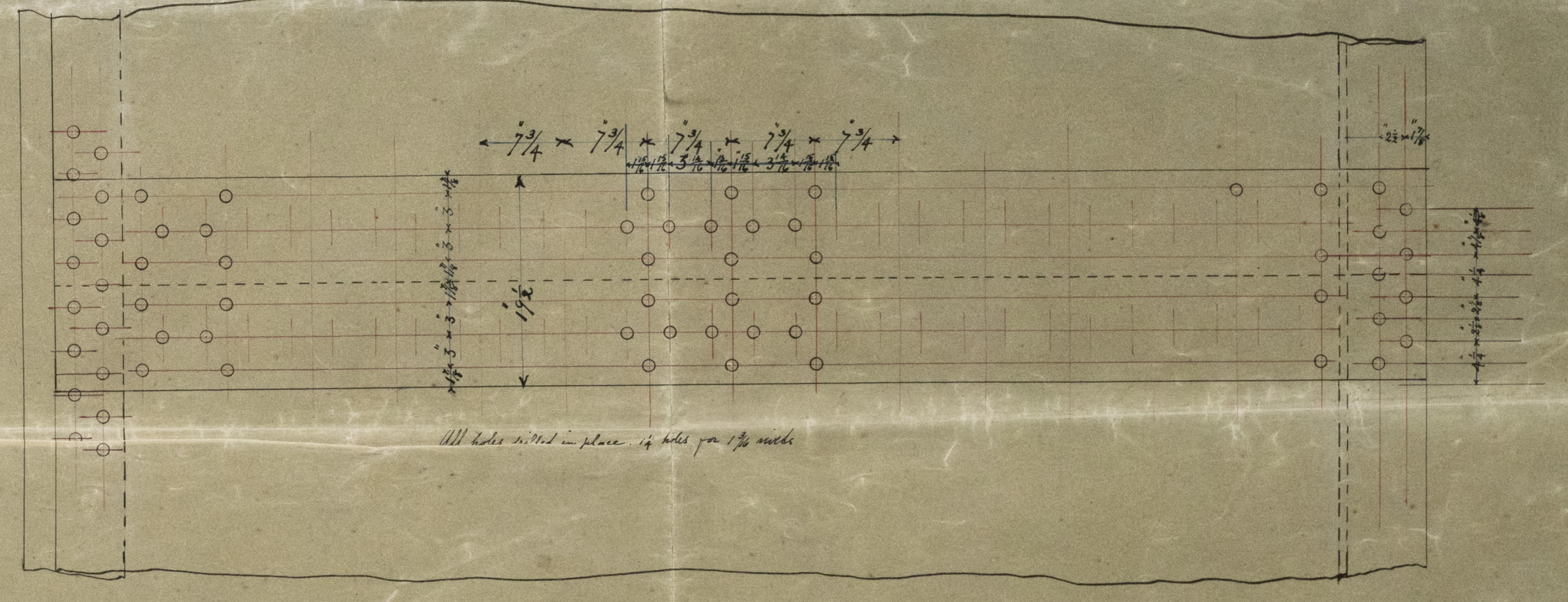
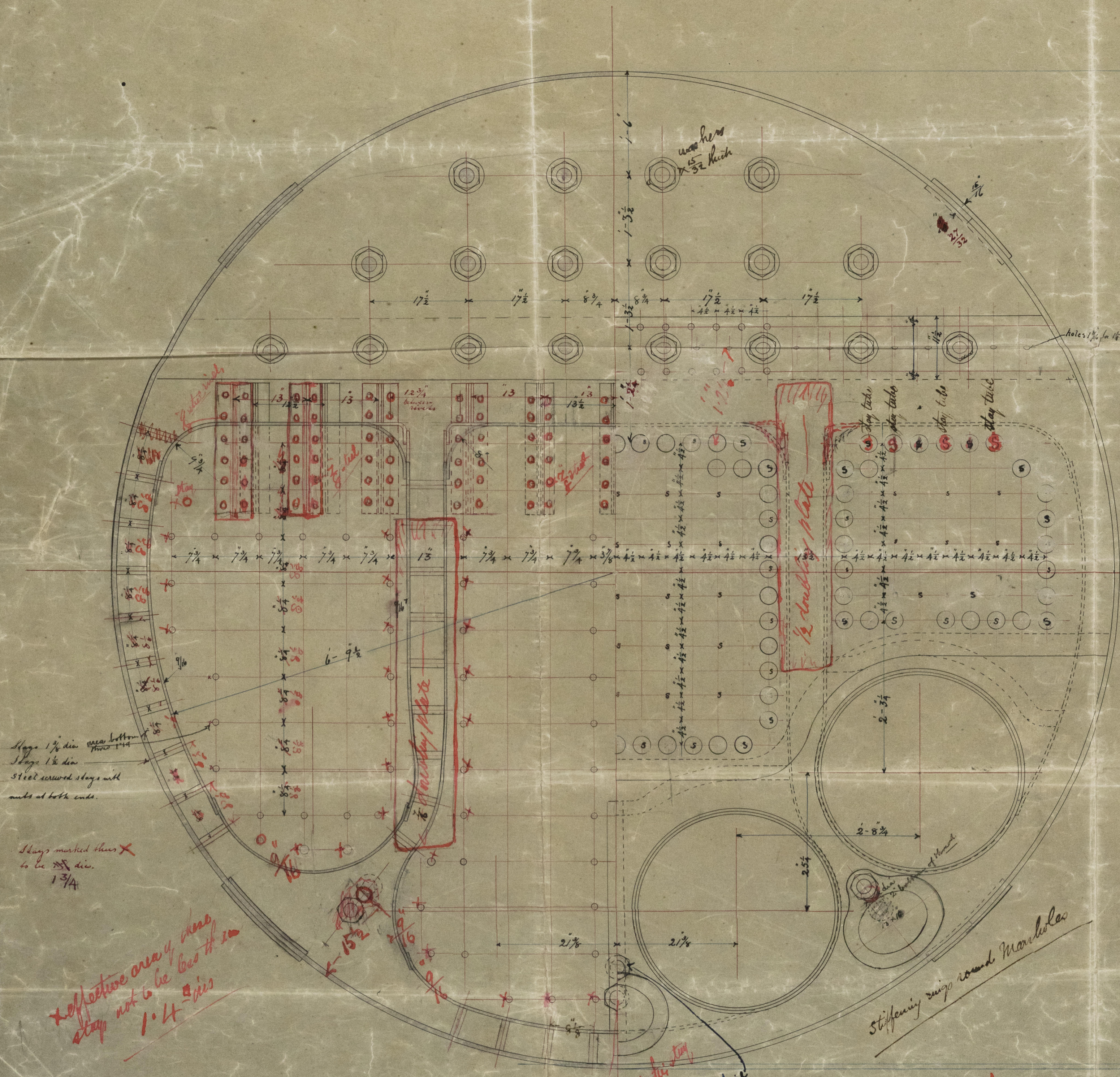
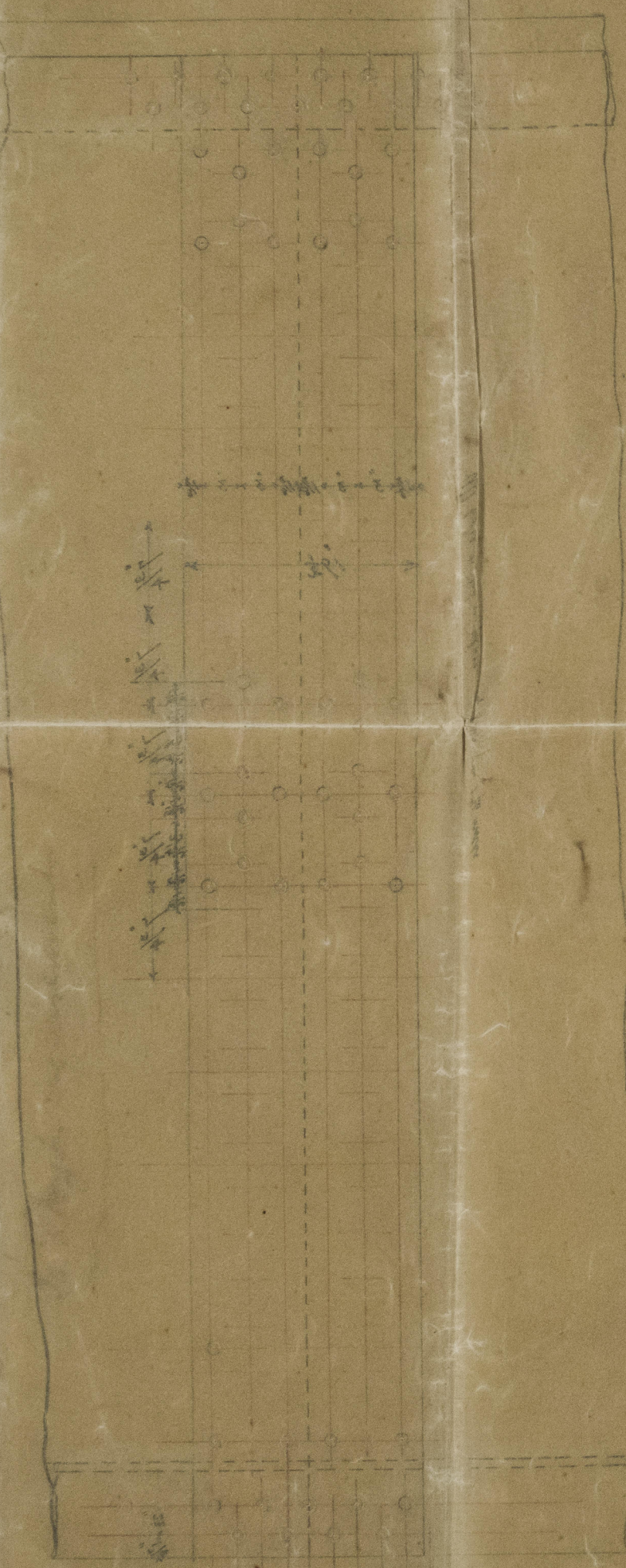


Proposed Steel Boiler "S.S. Swan" G.S.N. Co. London
Working pressure 130 lbs per square inch. Hydraulic test 260 lbs
Scale 1 inch = 1 foot April 13. 72.
To Lloyd's requirements





LLOYD'S REGISTER OF SHIPPING
RECEIVED
21 APR. 94
LONDON

LLOYD'S REGISTER OF SHIPPING
RECEIVED
21 APR. 94
LONDON

LLOYD'S REGISTER OF SHIPPING
RECEIVED
21 APR. 94
LONDON

0970-826407