

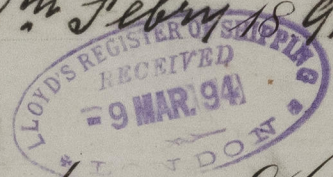
TELEGRAPHIC ADDRESS.
"BEARDMORE, GLASGOW"

TELEPHONE NO 1356.

LONDON OFFICE.
11 QUEEN VICTORIA ST. E.C.
NEWCASTLE OFFICE.
2 SAINT NICHOLAS BUILDINGS.

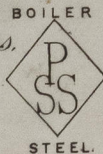
Parkhead Forge, Rolling Mills,
and Steel Works,
Glasgow. 8th Feb 1894.

Messrs H. J. Skelton & Co.



Bought of William Beardmore & Co.

Manufacturers of Steel Plates Bars & Rivets (Siemens Process) & Iron Plates Bars &
Rivets for Ships, Boilers, &c. & Marine Engine Forgings of all descriptions.
Iron & Steel Plates flanged for Boiler Fronts &c.



STEEL 307

		PS				
B	2	174	10.2	48	7/16	1318
C	2	175	10.1	54		143 3/4
A	2	408		72		12
D	1	506	79" diam		3/4	9212
E	2	545	8.5	89	19/32	1928
F	1	607				
G	1	300	48 diam		1/2	2120
H	2	408	12.0	18	7/16	5316
		<u>172</u>				<u>41734</u>

See City Index 4762 to Carron Co. Greenock
for Shipt. to London to your order.

4 Plates 1.8.1.4 6/51
8 . 3.9.2. . 3/57

Greenock

1/3/94

General Steam Navigation Co.



© 2021

Lloyd's Register
Foundation