

TELEGRAPHIC ADDRESS.  
"BEARDMORE, GLASGOW"

TELEPHONE NO 1356.

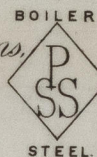
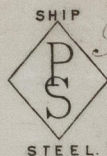
LONDON OFFICE,  
11 QUEEN VICTORIA ST. E.C.  
NEWCASTLE OFFICE,  
2 SAINT NICHOLAS BUILDINGS.

Parkhead Forge, Rolling Mills,  
and Steel Works  
Glasgow. 27 Sept 1893

Mr Wm Brown & Co

Bought of William Beardmore & Co

Manufacturers of Steel Plates Bars & Rivets (Siemens Process) & Iron Plates Bars &  
Rivets for Ships, Boilers, &c. & Marine Engine Forgings of all descriptions.  
Iron & Steel Plates flanged for Boiler Fronts &c.



S/S Rovers.

General Steam Navigation Co Ltd

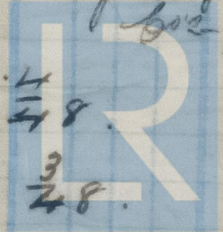
A	2	SS 159	10.8.	41	1/2	133.
B	2	154	10 9 1/2	5 11/2	"	17-12.
C	2	224.92	10.8	5.5.	"	182.
D	2	133 1/4	9.10	93	1/16.	27 3/4
E	1	261	60 1/2 diam		5/8.	43.
F	1	282	12.0	13		35.
G	1	924	85 diam		1.	14 1/2.
						63.2.

11

Renck. 1904 1 to.  
Cannon ca 9 months for.  
Ship to London

Ship Builders;  
Super General Steam Navigation  
Co Ltd London

4 Plate	2	0	3.12	46.5
3	2	10	34	48.
2		14	10	48.
1		3	10	48.
1		14	1.12	48.



Lloyd's Register  
Foundation

L0N728-0256