

TELEGRAPHIC ADDRESS.  
"BEARDMORE, GLASGOW"

TELEPHONE NO 1356.

LONDON OFFICE.  
11 QUEEN VICTORIA ST. E.C.  
NEWCASTLE OFFICE.  
2 SAINT NICHOLAS BUILDINGS.

Parkhead Forge, Rolling Mills,  
and Steel Works,  
Glasgow 24<sup>th</sup> Jan'y 98

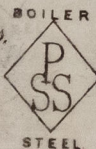
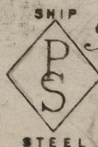
Messrs Brown & Laue

Bought of William Beardmore & Co.

Manufacturers of Steel Plates Bars Rivets Siemens Process & Iron Plates Bars.

Rivets for Ships, Boilers, &c. & Marine Engine Forgings of all descriptions.

Iron & Steel Plates fanged for Boiler Fronts &c.



IAS n. 24 Steel Angles 5, 3,  $\frac{3}{8}$ , 25.0 281.

Shipped per the S.S. "Bohemian"

General Steam Navigation Co  
Deptford

George H. Woodcock  
Surveyor to Lloyd's Register.  
1/2/92

$\frac{1}{25}$



© 2021

Lloyd's Register  
Foundation

LON 726-0267