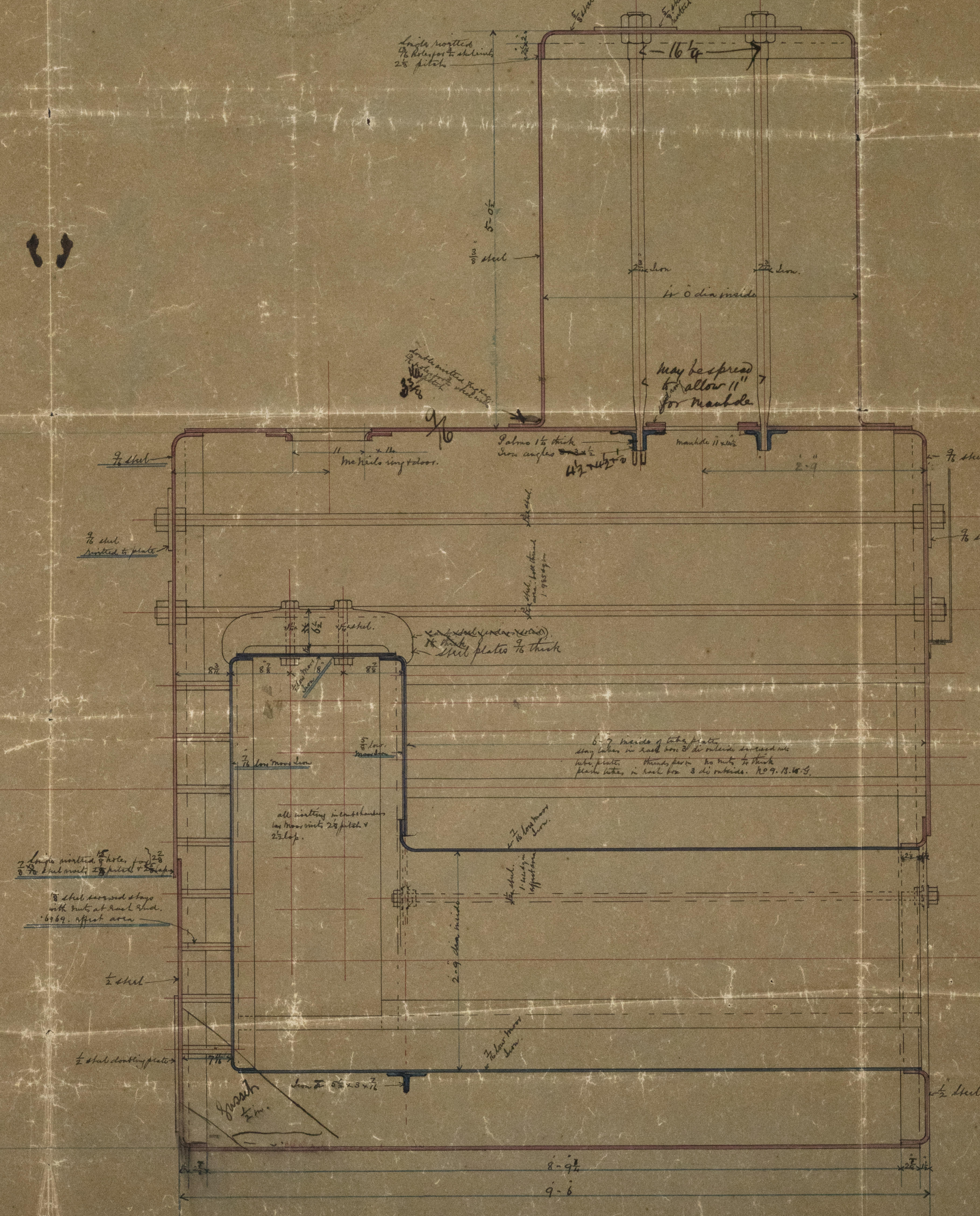
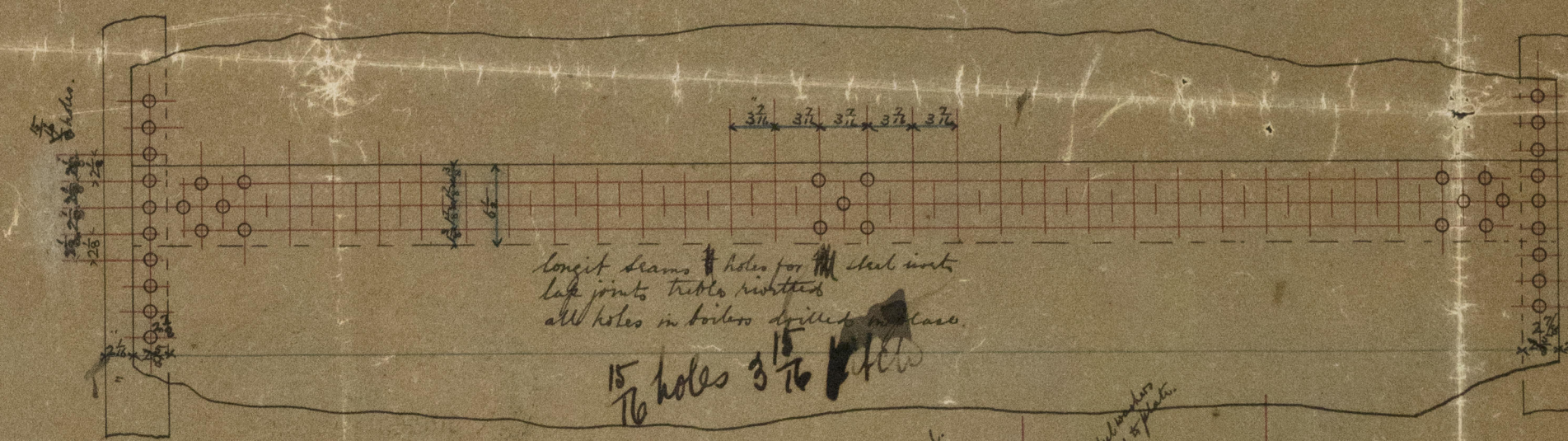
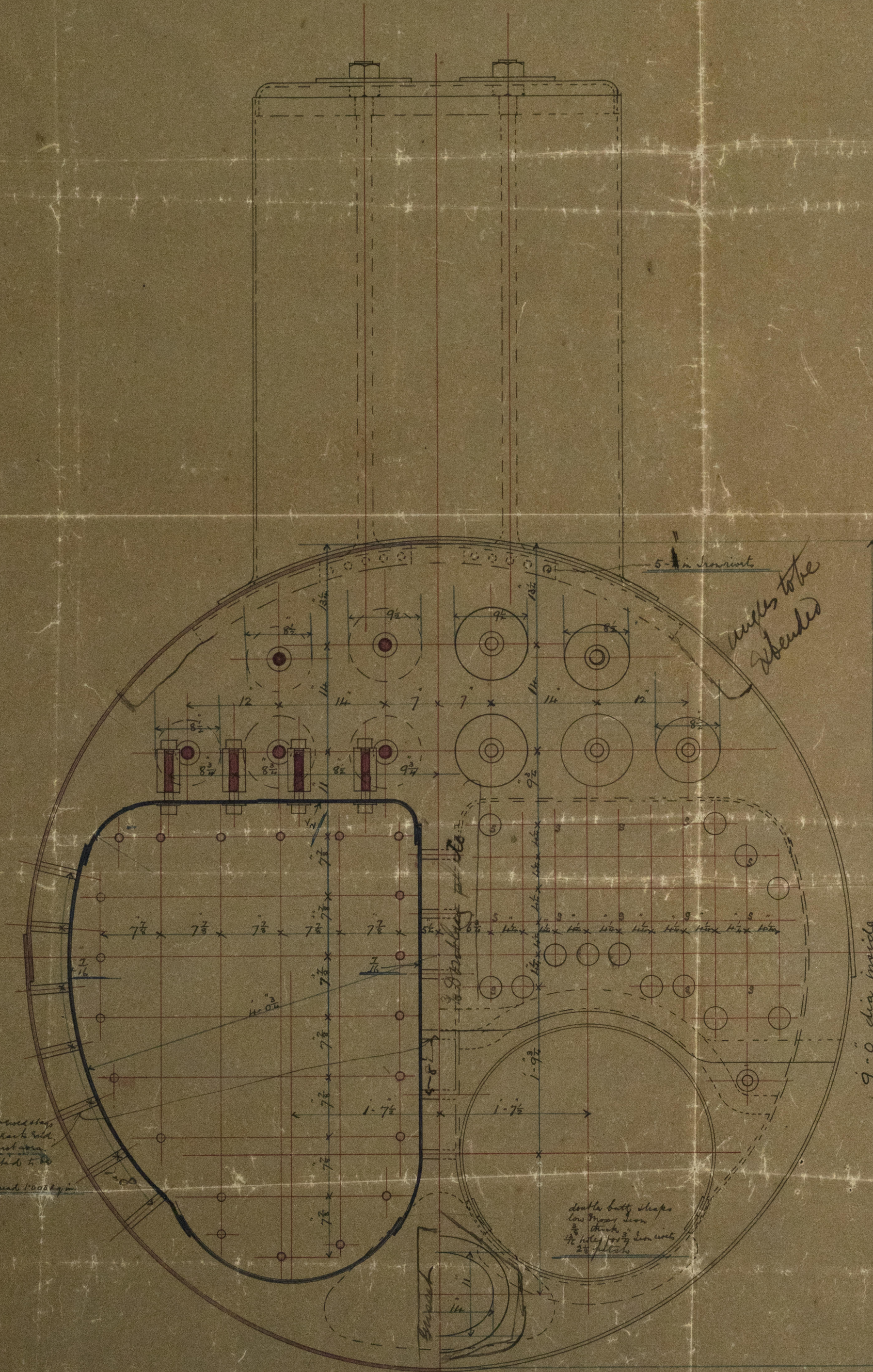


Boilers for Rio Laja Ld.
2 Boilers shells of Steel & internal parts of
Low Moor Iron. Small tubes of plain Iron.
Working pressure 85 lbs per square inch. Superheater at 170 lbs.
Scale 1 in = 1 foot. 15th Oct 1891.



J. J. M.
17/10/94

Lon 53015

