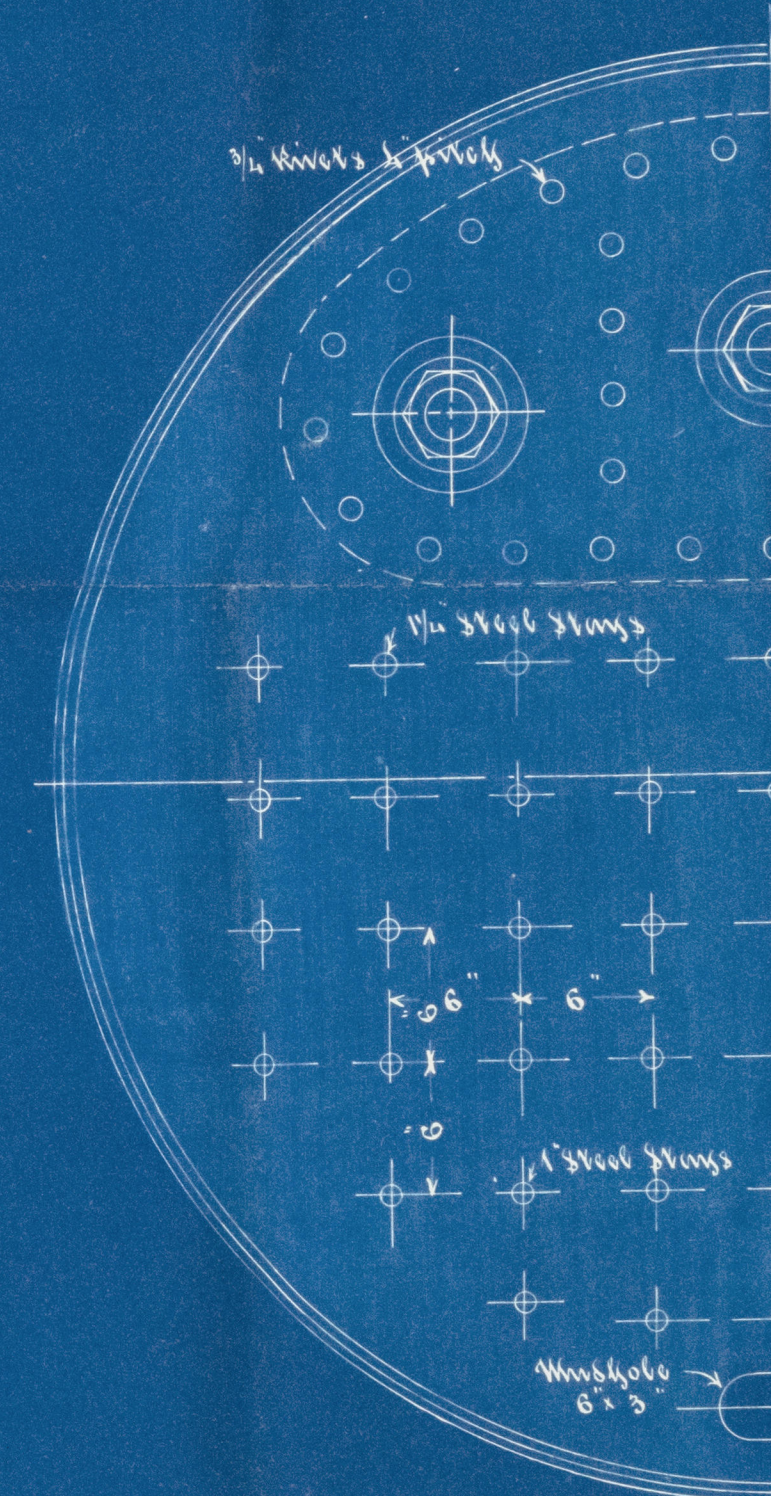
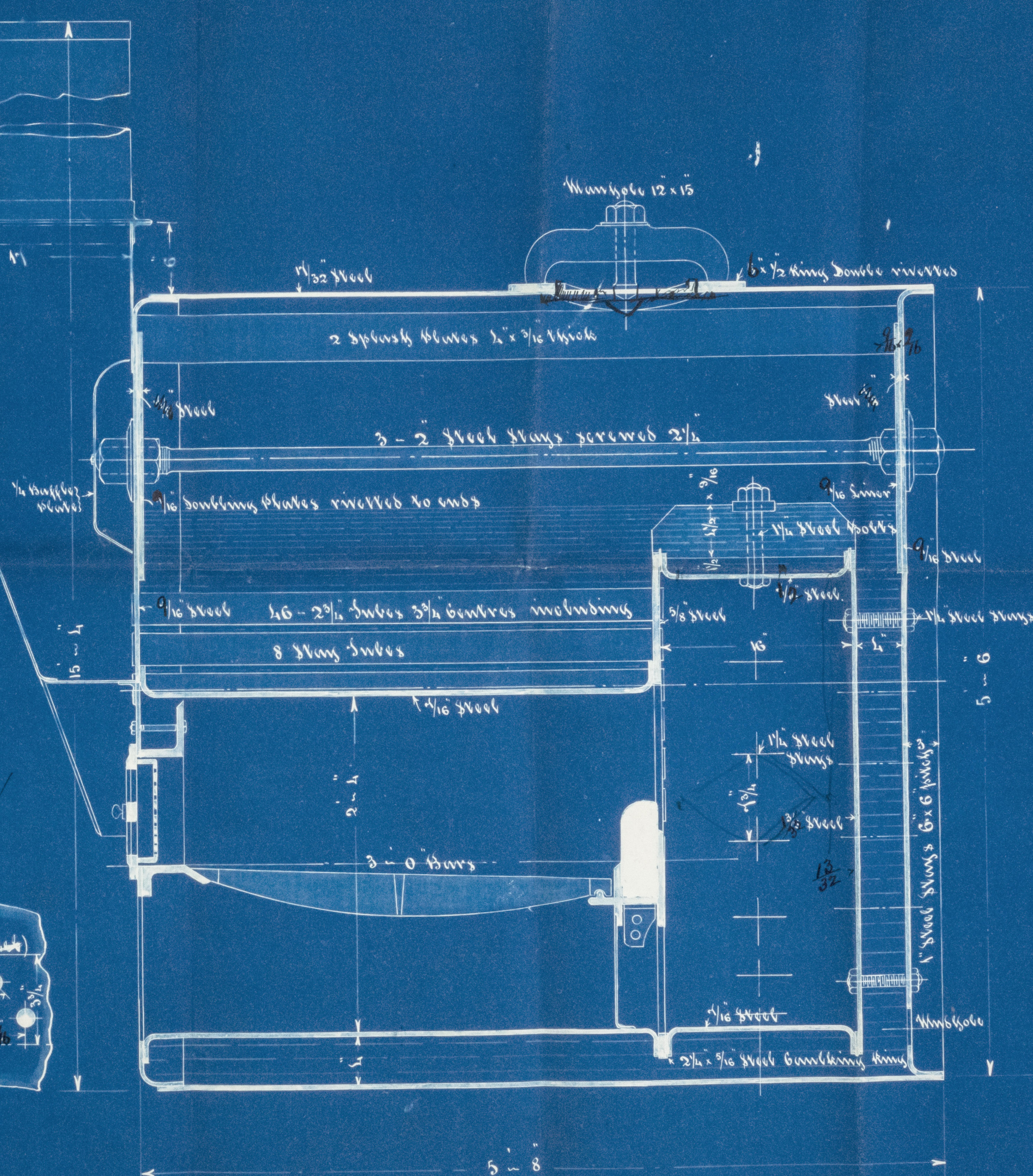
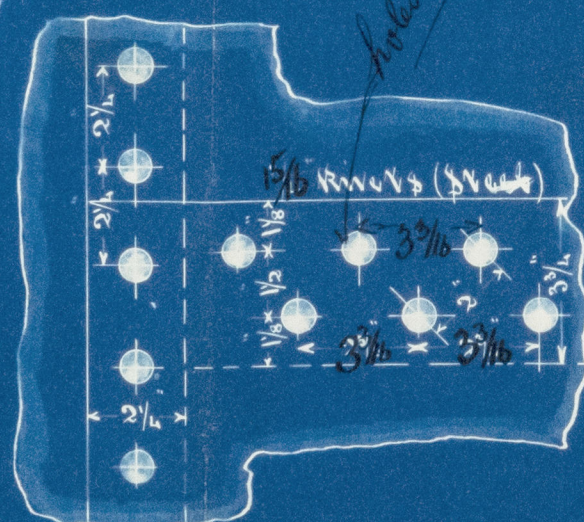
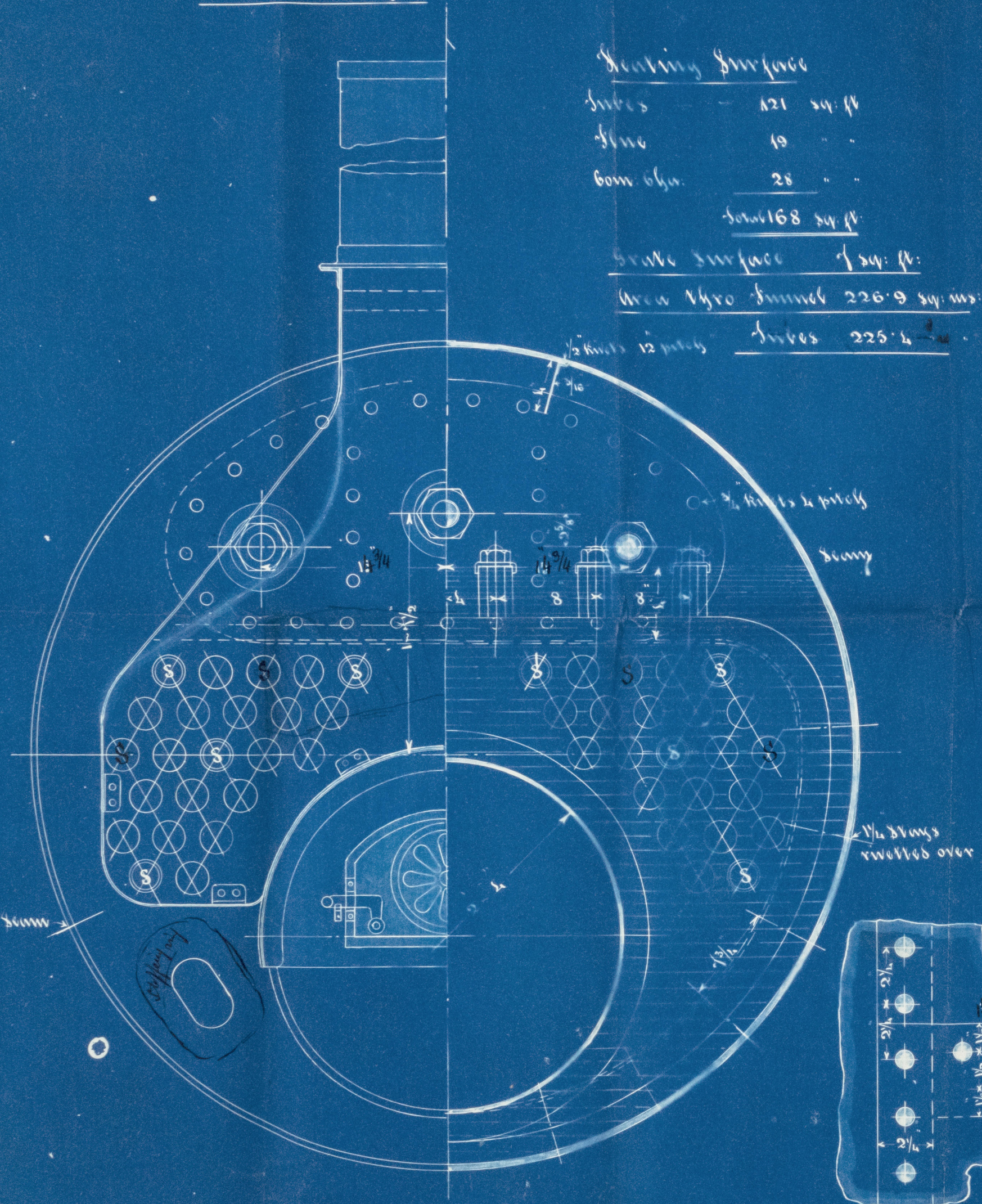


16/5/90

One Boiler Thus

Boiler 1/2" = 1'-0"

Heating Surface
 Tubes 121 sq. ft.
 Flue 19 "
 Gross Area 28 "
 Total 168 sq. ft.
 Grate Surface 7 sq. ft.
 Area thro. funnel 226.9 sq. ins.
 Tubes 226.4 "



Working Pressure 120 lbs per sq. in.
 Test 240 "

16.5.90

FRASER & FRASER
 BROMLEY-BY-BOW
 LONDON, E.

691