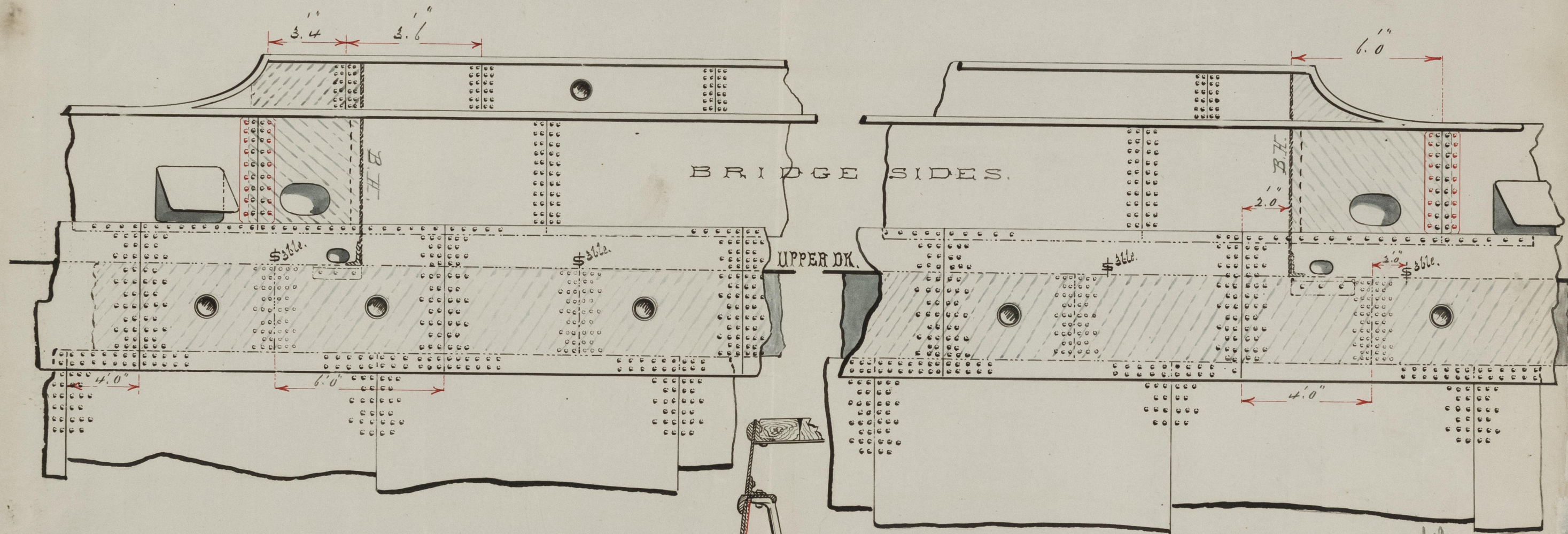


S.S. "ECHUCA"

Sketch Showing Shell Butts at ends of Mid. Br^d House

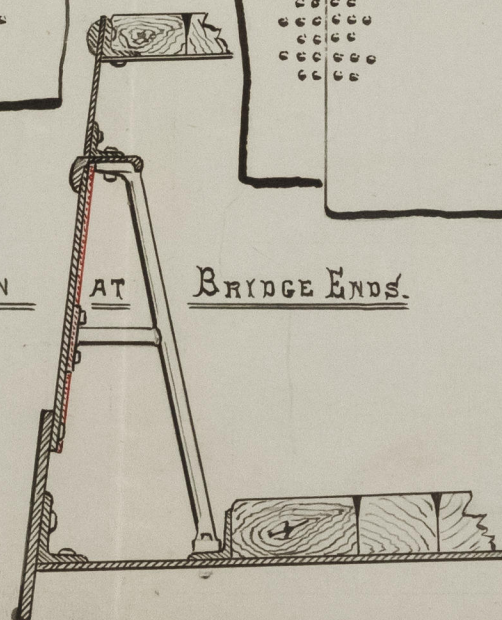


~ ~ ~ AFT END ~ ~ ~

SECTION AT BRIDGE ENDS.

~ ~ ~ FORE END ~ ~ ~

NB. : \$ Show position of the Upper Deck Stringer Butts.



LON724-0054

As per instructions from Mr. Connel, 1899
 Lloyd's Register
 Foundation
 1897-89