

Let. to Builder
13/6/85

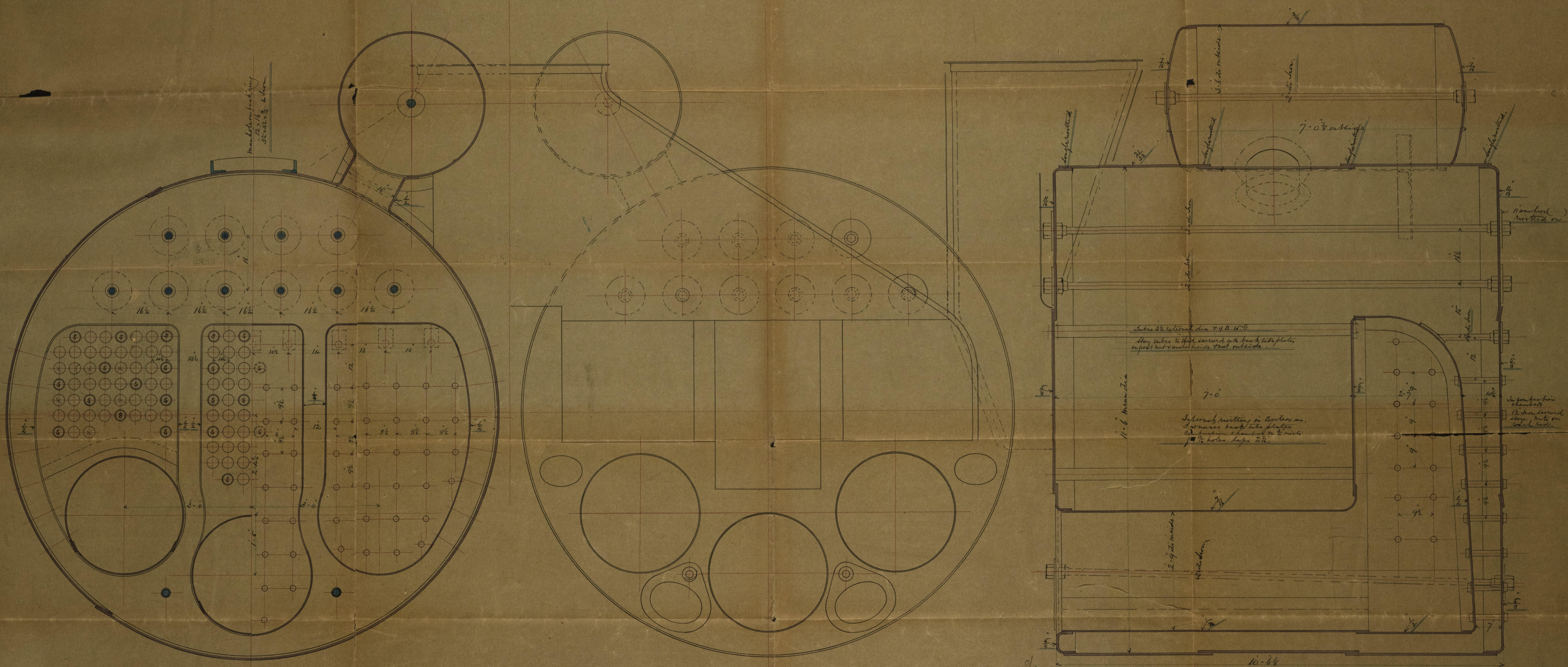


Boilers for S.S. "Rhona"
mean diameter 11.6 x 10.6 ft long.
To be made of the Leeds Forge Co. steel.
working pressure 70 lbs per square inch. Hydraulic test 140 lbs per sq inch.

Grate surface in two Boilers	80 sq feet.
Heating surface	
Tube sheet face	1902
Total	2460

Scale 1 inch = 1 Foot. 9th June 1885. A.Y.

Position in steam room.
Single riveted. 7/8 inch pitch for 7/8 holes.
Lap 2 3/4. Pitch 2.



Longitudinal seams in shells double riveted.
Pitch 2 3/4. Lap 4 1/2 in. All holes drilled after bending.
other seams in shells 7/8 holes single riveted. Lap 2 3/4. Pitch 2 3/4.