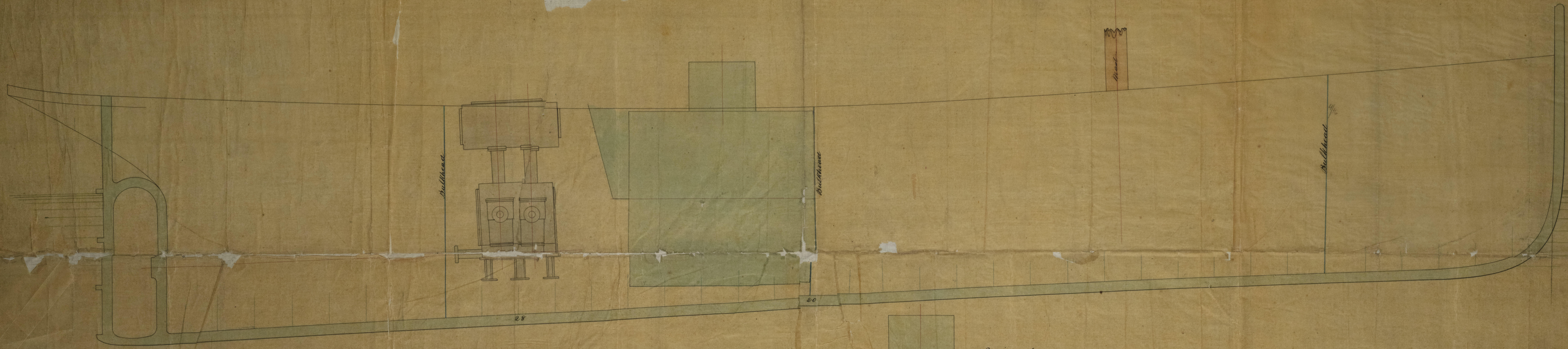


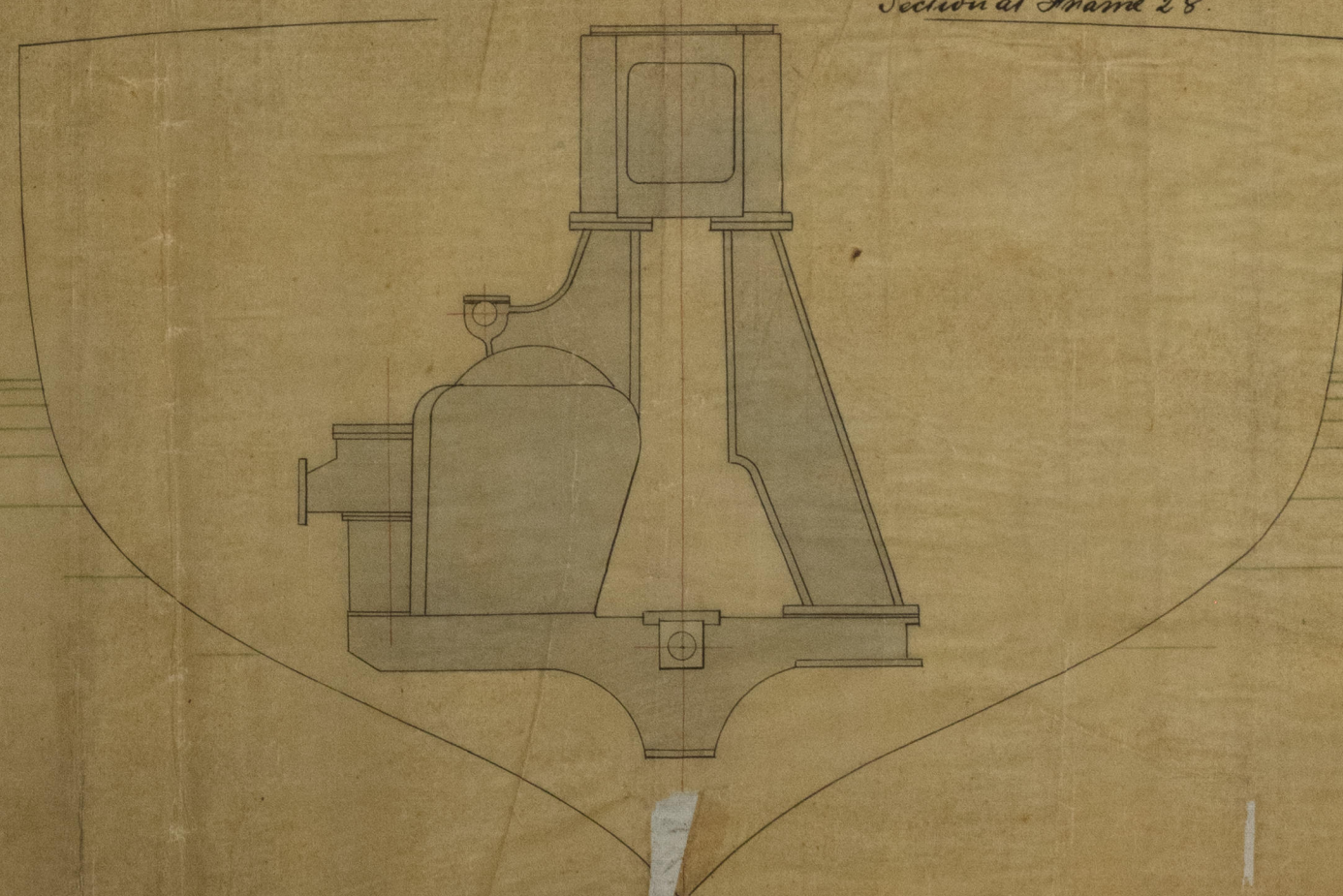
Disb'd
14 MAY 1872

Sheer Plan of Screw Steam Trawler
Scale 1" = 10 feet.

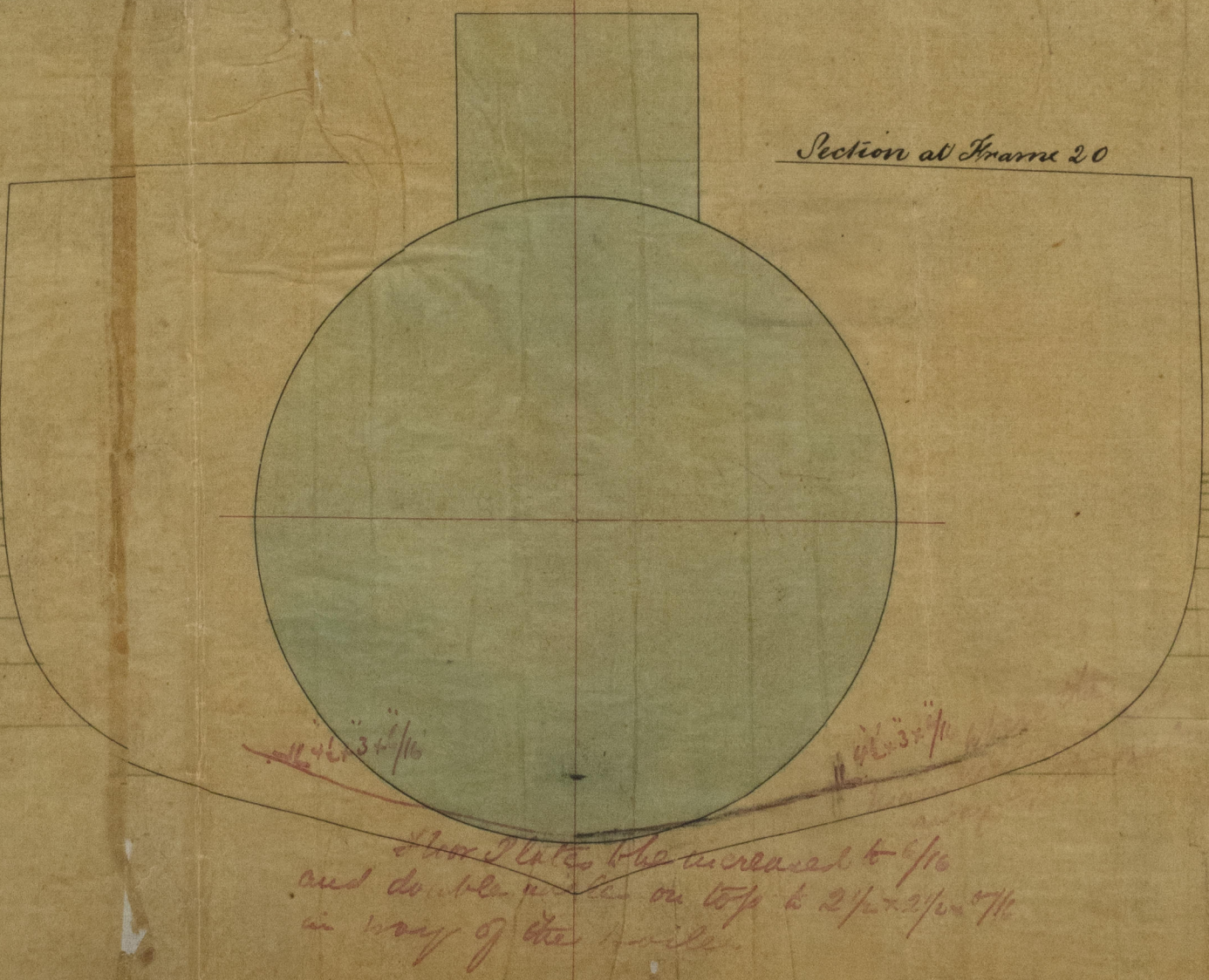
Arthur Iron Works Co.
S. Steam Trawler
66 x 15.5 x 9



Section at Frame 28



Section at Frame 20



1872
22 1/2

the plates increased to 1/2
and double on top to 2 1/2 x 1/2
in way of the boiler

Pioneer

Lon 42801



© 2021

Lloyd's Register
Foundation