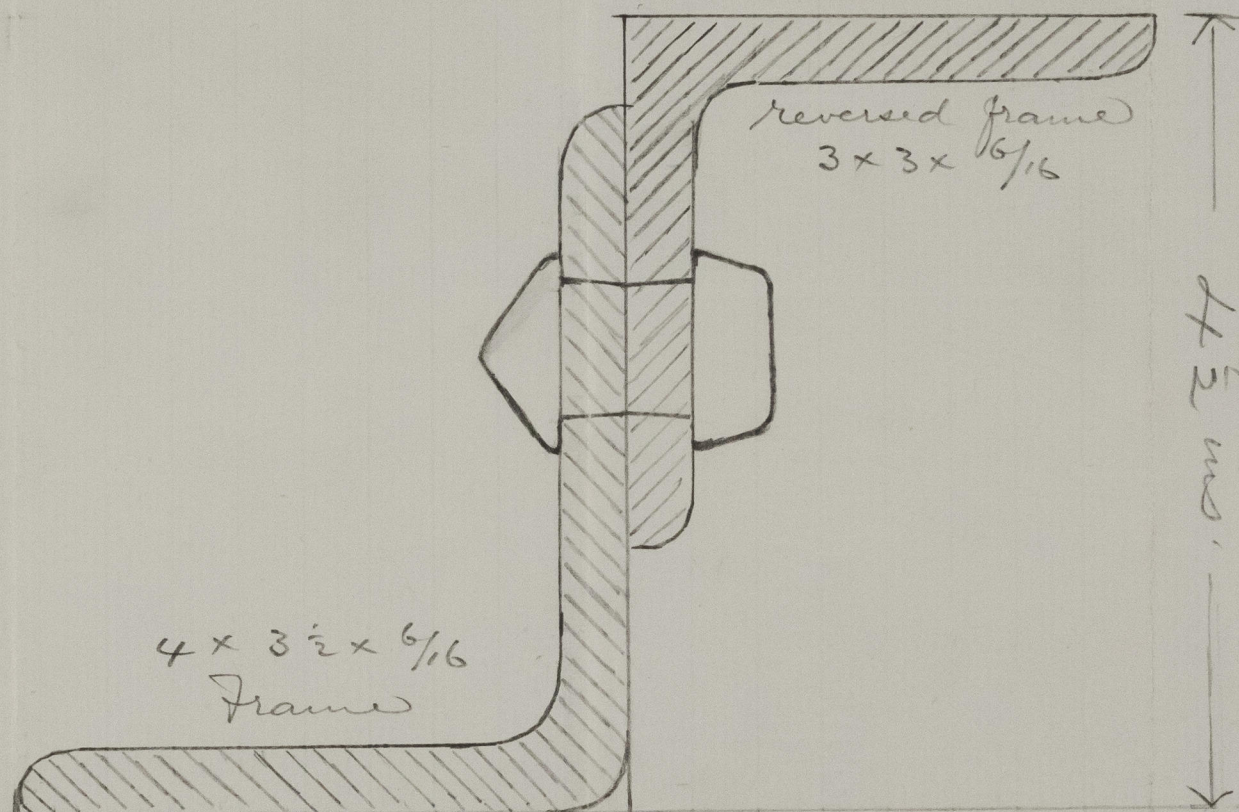


Steel vessel to be built at Lindholmens works  
Gothenburg -

240.2 x 32.5 x 20.1 k. m.

Suggested mode of fitting Frame and Reversed Frame.

4-3-80.



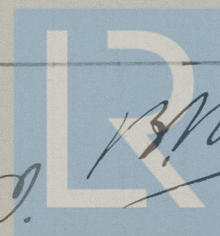
Outside plating

h.c.

B.M.

J.M. 4/3/80

IRONS46 - 0155



© 2021

Lloyd's Register  
Foundation