

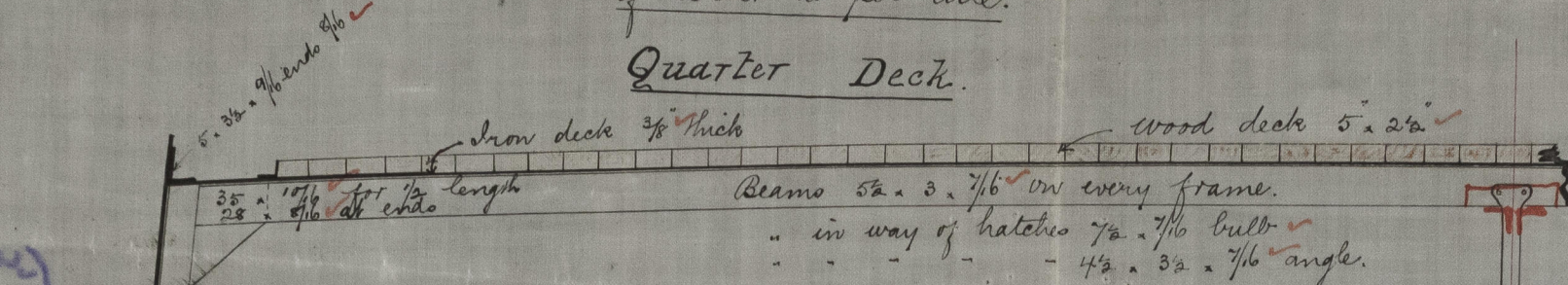
22.6.80

S.S. "Joseph Viney" No. Report No. 15114
 S.S. "Agnes Otto" " " " 15337

S.S. Nos 165-8.

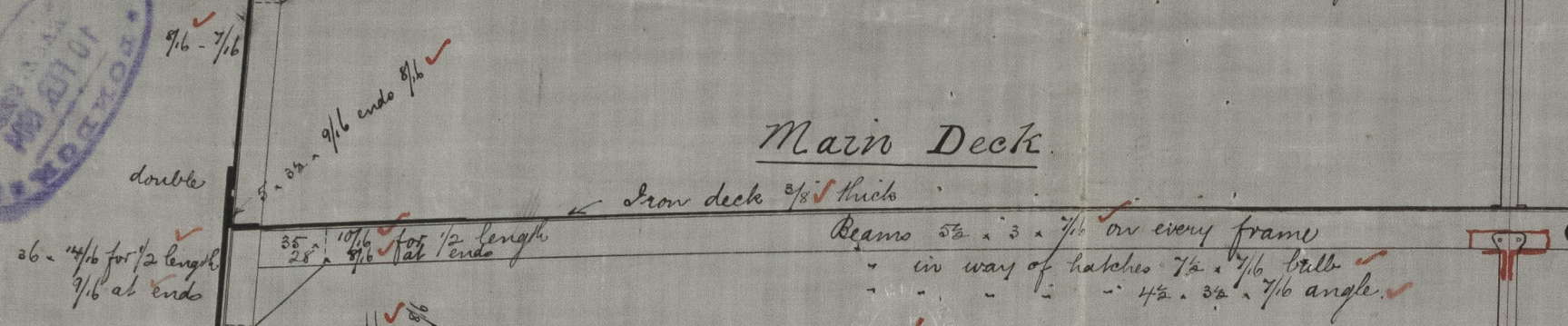
Quarter deck exceeding $\frac{1}{4}$ vessel's length to be strengthened in way of Break as per rule.

Quarter Deck.



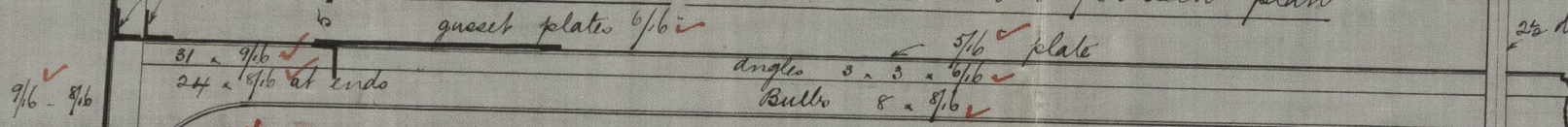
Class 100 A.

Main Deck.



$\frac{1}{2}$ Beam 16.15 ✓
 $\frac{1}{2}$ Girth 31.65 ✓
 Depth 19.15 ✓
 $66.95 \times 247 = 16536.65$

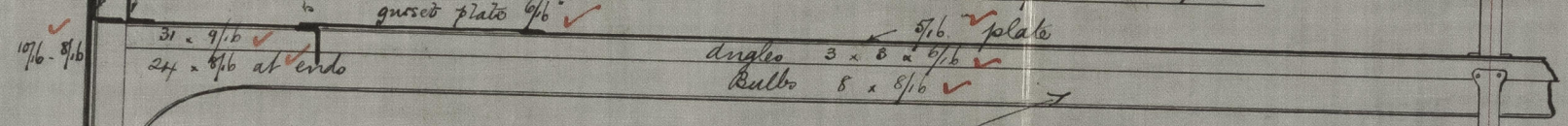
Hold Beams below Quarter deck as per deck plan
 gusset plate 9/16 ✓



12.8 depths
 12 and 13 depths
 7.6 Breadths

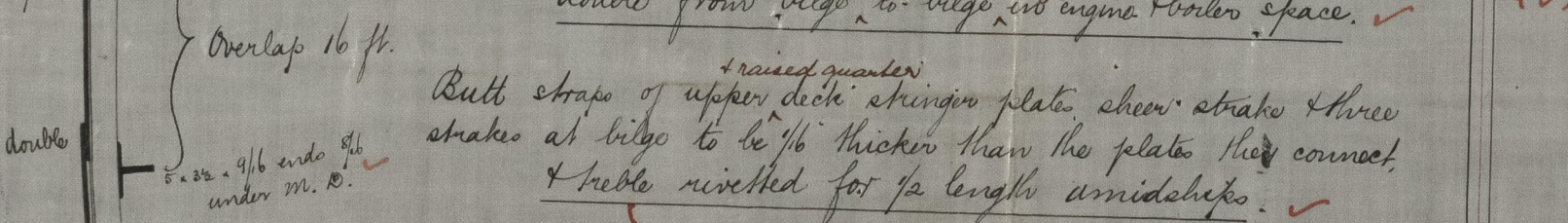
Equipment No. 18189 ✓

Hold Beams below Main deck as per deck plan.
 gusset plate 9/16 ✓



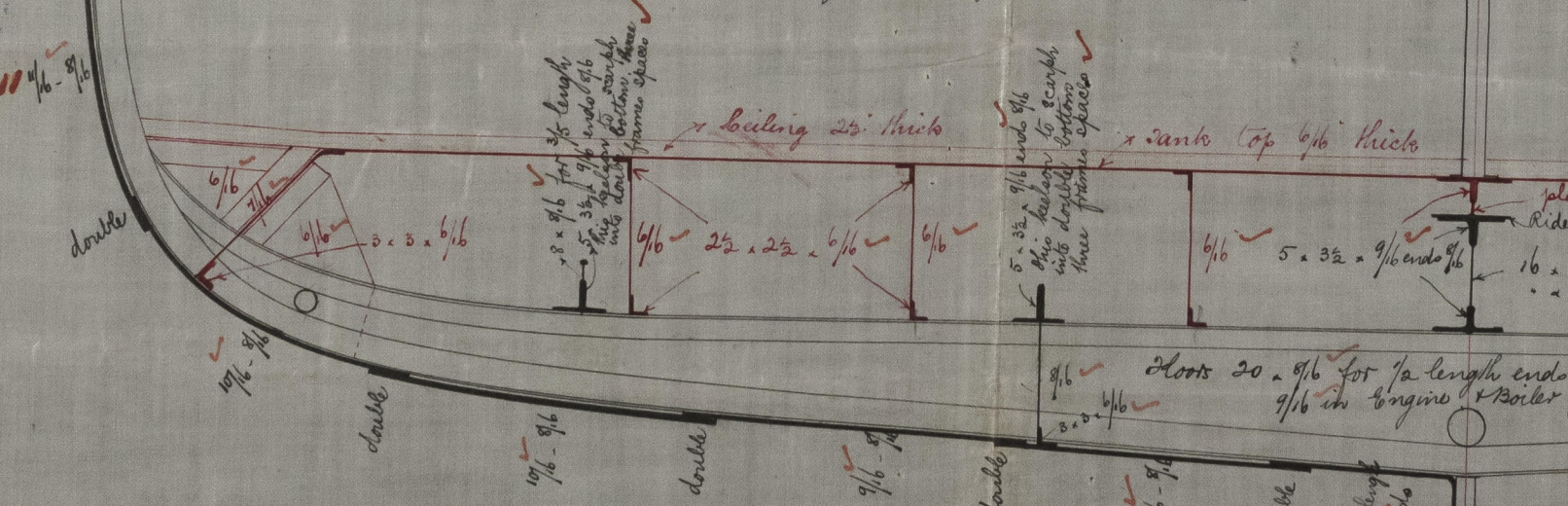
Forecastle beams 6 1/2 x 7/16 bulbs
 " " " 2 3/4 x 2 3/4 x 7/16 angles.

Frames 4 x 3 x 7/16 for 3/5 length amidships, 9/16 at ends, spaced 25" apart.
 Reverse - 3 x 3 x 6/16 to extend to upper & lower decks alternately.
 double from bilge to bilge in engine & boiler space.



After ballast tank 74.9 long
 Fore - 99.8

Butt straps of upper deck stringer plate sheer strake & three strakes at bilge to be 1/16 thicker than the plates they connect. & bevel riveted for 1/2 length amidships.



plates in way of tanks 9/16
 rider plate 11 x 10 1/16
 16 x 12 1/16 for 1/2 length
 10 1/16 at ends

Keel 8 1/2 x 2 1/2 ✓
 Stem 8 x 2 1/2 ✓
 Stern Post 10 x 4 1/2 ✓

JOHN READHEAD & CO.
 Shipbuilders.
 SOUTH SHIELDS.

mm
 22/6/80

JOHN B. BAYNE
JOHN B. BAYNE

50/100
1/100

0152



IRON 546-0152

285 14³ Iron
1/2 "Joseph Virey"

285 14³ 102

22 1/2
22 1/2



© 2021

Lloyd's Register
Foundation