

Iron ship Bellini Sunderland report No. 12521

MIDSHIP SECTION

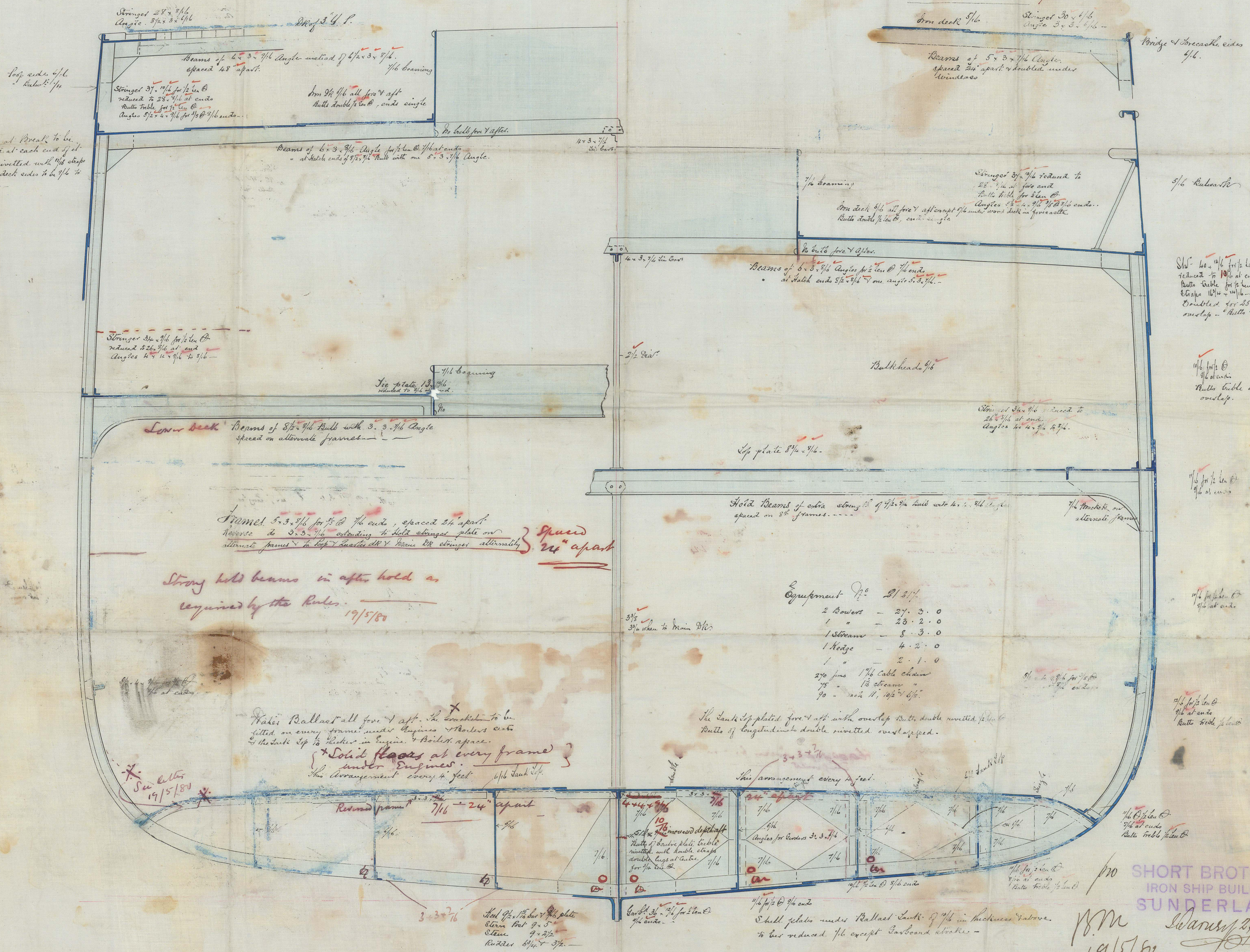
S.S. No. 110

SCALE - 1/4 INCH TO 1 FOOT

PRINCIPAL DIMENSIONS

|                      |          |
|----------------------|----------|
| LENGTH PER RULE      | 258.6    |
| BREADTH DO.          | 36.9     |
| DEPTH TO TOP OF KEEL | 21.6 1/2 |
| CLASSIFICATION       | 100A     |

1/2 Depth 35.2 by measurement  
 1/2 Breadth 17.8 1/2  
 Depth 21.3 1/2  
 1/2 6 1/2 x 258.5 = 9288  
 Over 11/2 inch exceeding 12 depth = 11.9  
 1/2 Breadth 7.2



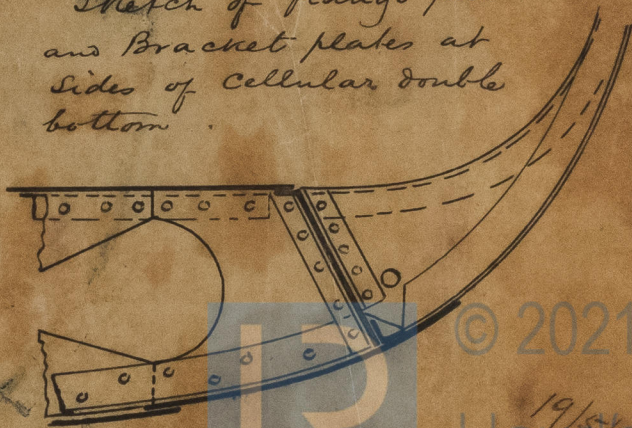
Equipment

|                           |                     |
|---------------------------|---------------------|
| 2 Bowlers                 | 27. 3. 0            |
| 1 "                       | 23. 2. 0            |
| 1 Steamer                 | 8. 3. 0             |
| 1 Hodge                   | 4. 2. 0             |
| 1 "                       | 2. 1. 0             |
| 270 fms 1 1/2 Cable chain |                     |
| 75 "                      | 13 Steamer          |
| 70 "                      | each 11, 10 1/2 1/2 |

SHORT BROTHERS,  
IRON SHIP BUILDERS,  
SUNDERLAND.



Sketch of flange plate  
and Bracket plates at  
Sides of Cellular double  
bottom.



© 2021

19/5/80  
Lloyd's Register  
Foundation

IRONS46-0015 1/2



Midship section

1RONS46-0015

7/8 "Oga"

ex (Belkin)

Iron 28309

midship section

midship section

midship section

midship section



© 2021

Lloyd's Register  
Foundation