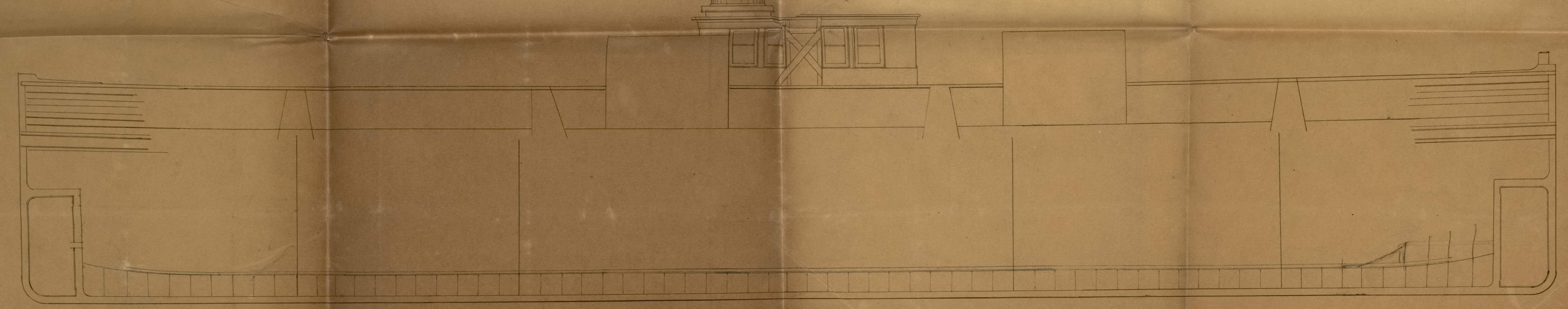


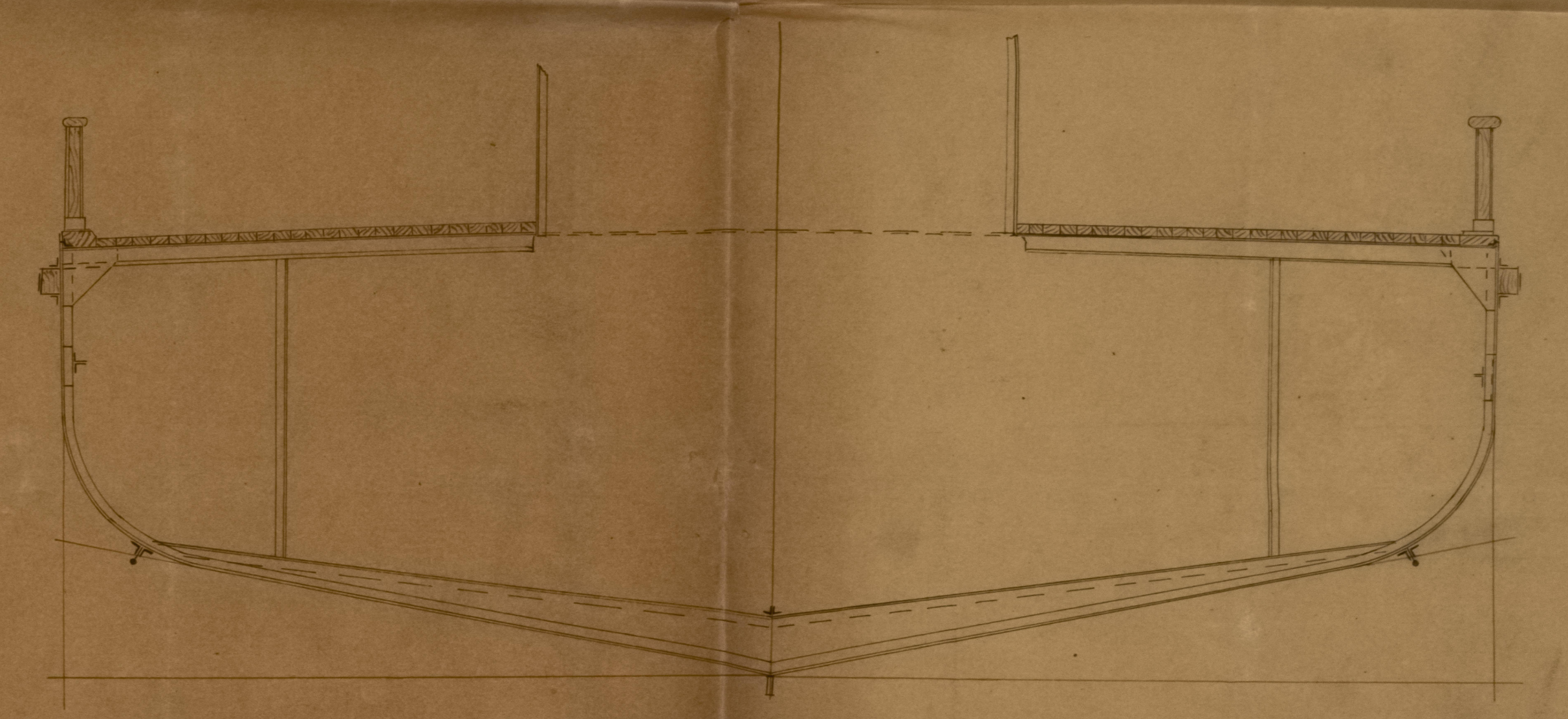
Copy of original Plan as  
approved by the Ferry  
Commission & stamped the  
28<sup>th</sup> Jan. 1880.

Dimensions  
Length R<sub>o</sub> — 130 ft  
Breadth Moulded — 45 "  
Depth do — 15 " 11 ins

— WOODSIDE FERRY — "Rebington"  
LUGGAGE STEAMER  
Iron No 28,308.



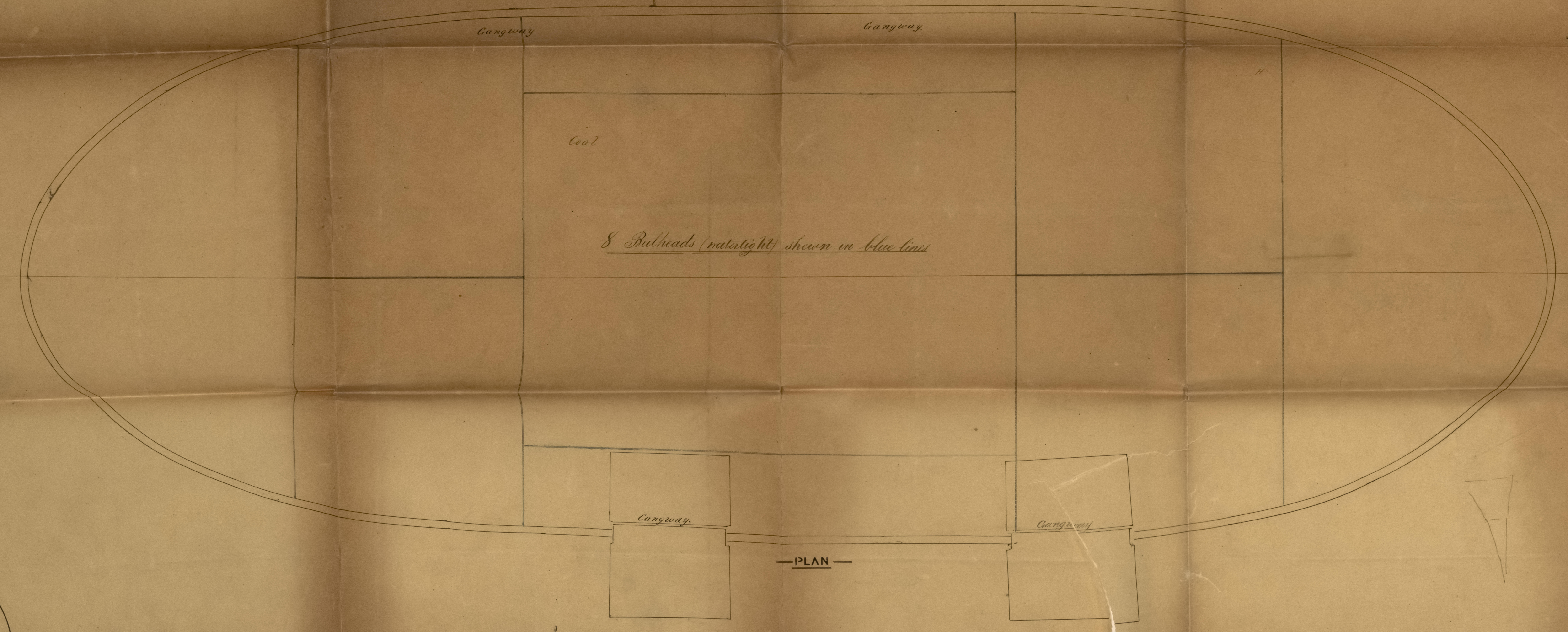
LONGITUDINAL SECTION



SECTION

Wm. Albury & Sons  
Engineers & Shipbuilders etc  
Preston

Scale 1/4" = one foot.



PLAN

8 Bulkheads (watertight) shown in blue lines

L. Fred. 9<sup>th</sup> Nov 1880  
9.9.2