

Steel S. S. "Oak" Glasgow
Greenock Report N^o 4883.

To Class 100 A. I. Steel

Depth to Top of hole = 18.58
 Half Beam = 16.12
 Half Girth = 31.10

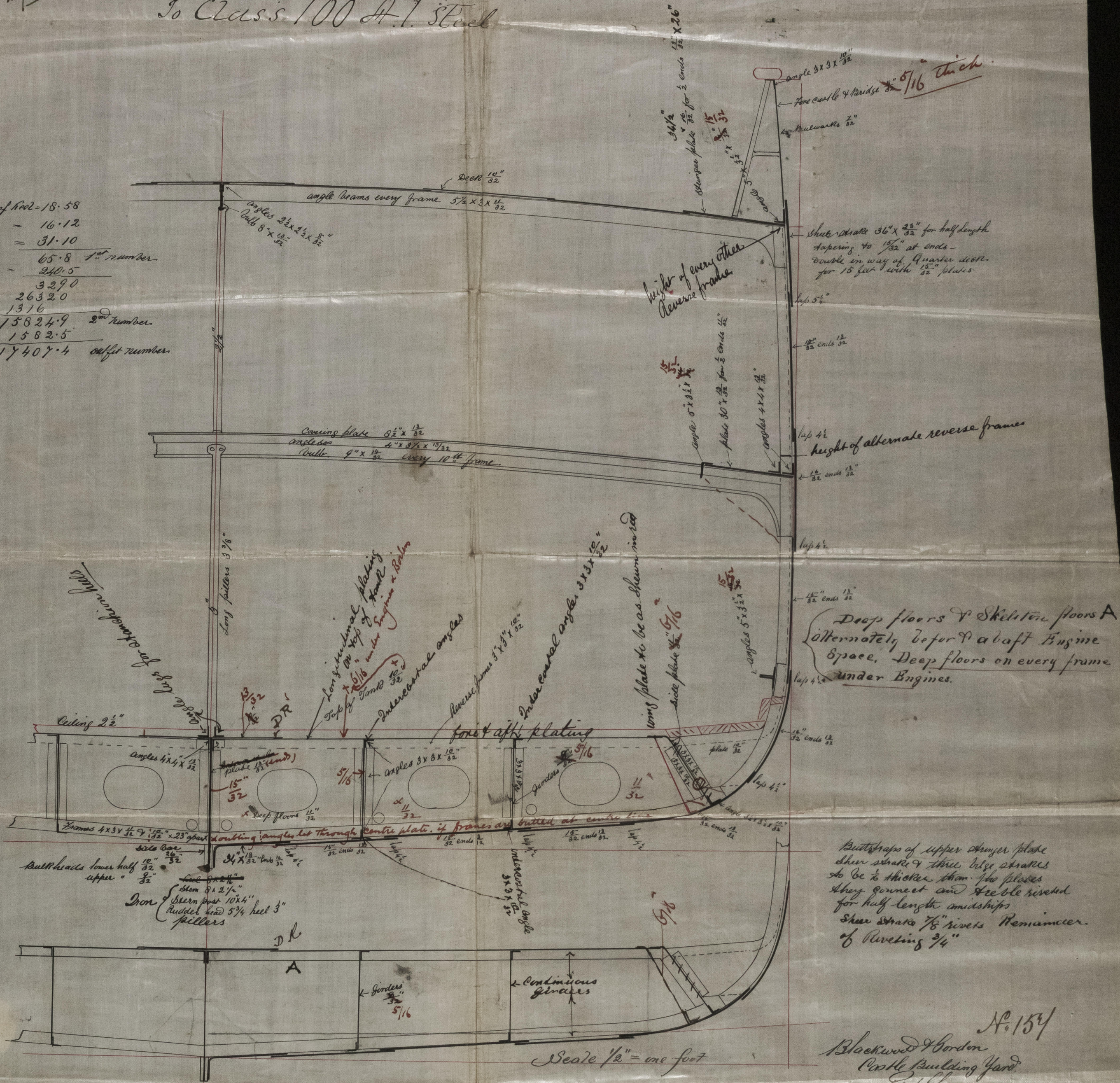
Length on dock = 65.8 1st number.

3390
 26320
 1316

15824.9 2nd number.

1582.5

17407.4 offset number.



Buttstraps of upper stinger plate
sheer strake & three rise strakes
to be $\frac{1}{2}$ thicker than two plates
they connect and are be riveted
for half length amidships
sheer strake 78" rivets Remainder
of Plating $\frac{3}{4}$ "

No. 154
Blackwood & Gordon
Rattle Building Yard
Port Glasgow
19/1/80

Longitudinal section

Scale $\frac{1}{2}" = \text{one foot}$

← Janders
32
5/16

2- Continuous girder

© 2021
Lloyd's Register
Foundation

Handwritten notes and signatures at the top of the page, including "for 2814" and "L. J. ...".

2814

