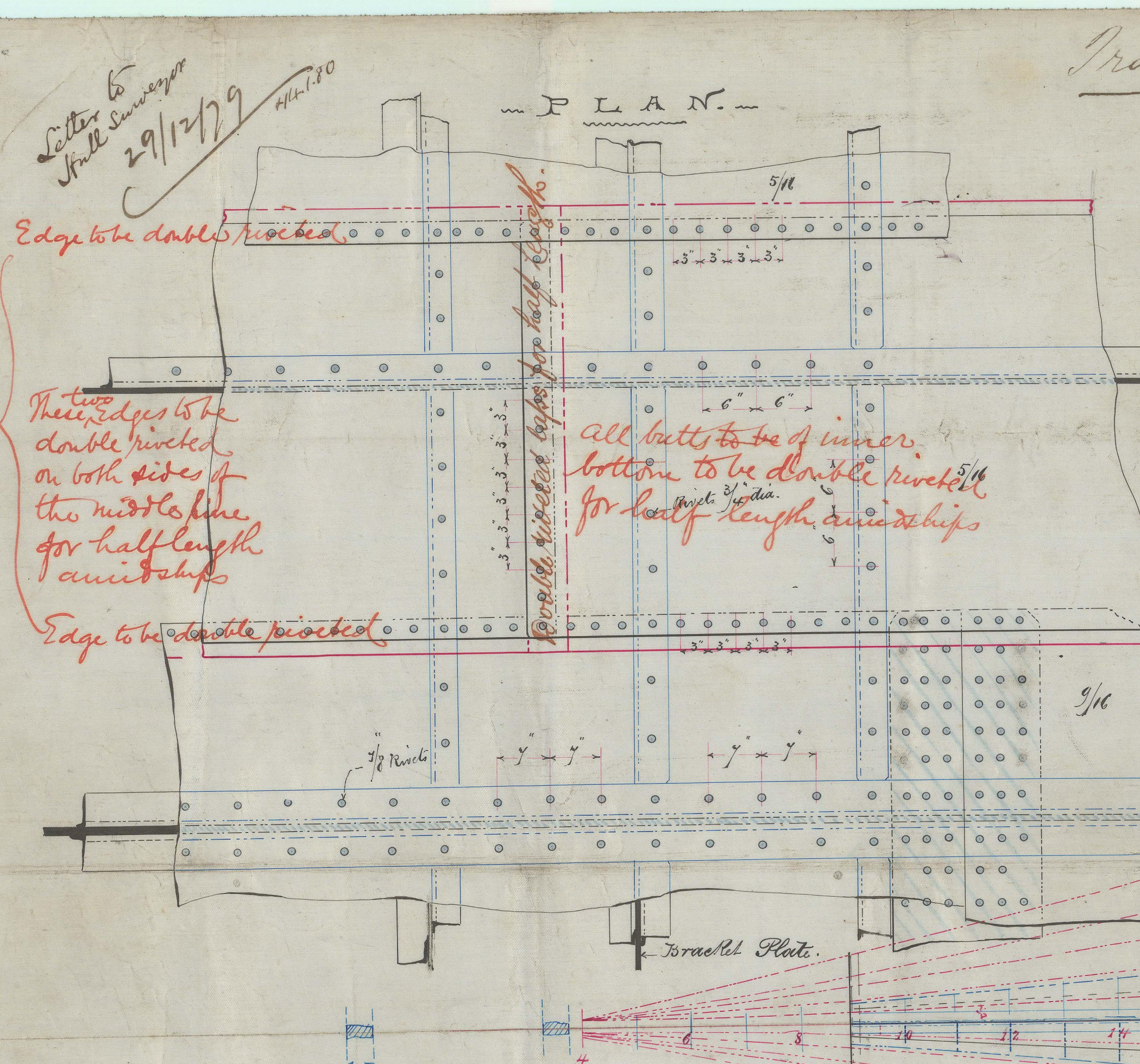


Letter to  
J. H. Swanwick  
29/12/79

Edge to be double riveted  
These edges to be double riveted on both sides for the middle line for half length of main beams  
Edge to be double riveted



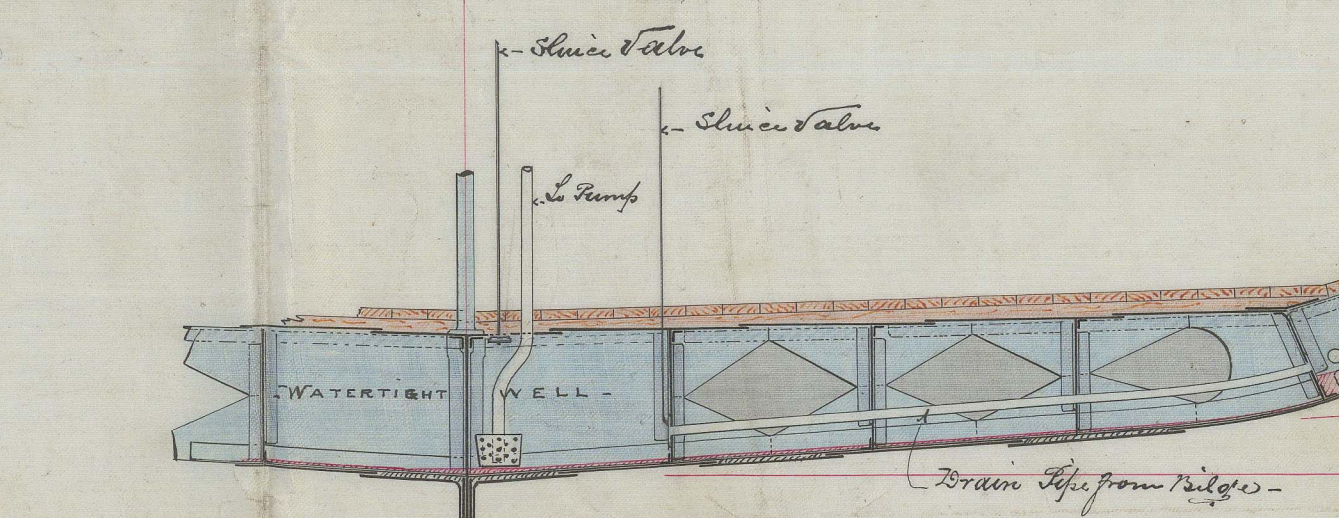
Tracing No 3.  
Enlarged view showing Rivetting of Double Bottom.  
Scale 1 inch = one foot  
First Longitudinal  
Note: 1/2" Plating 1/8" under Engines & Boilers  
Iron Rivets: 3/4" diam. 3' centres

Steel S.S. "Asprian Monarch," Report No. 4928.

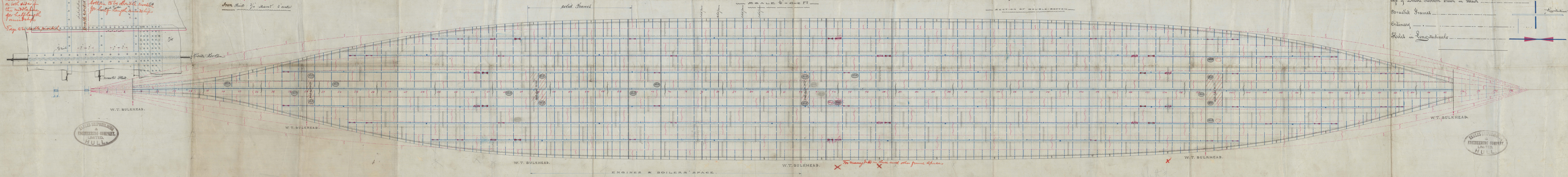
No 224

PLAN OF DOUBLE-BOTTOM

SCALE 1/4" = ONE FT



NOTE:  
Butts of Longitudinal Plates  
Continuous Angle Iron  
Shell Plating  
Slop of Double Bottom shown in "Black"  
Borachet Frames  
Ordinary  
Stakes in Longitudinals



1201545-0060



IRONS4S-0060

No 3

M.L.P.



© 2021

Lloyd's Register  
Foundation