

6979

1/2 Midship Section
S, S, M 21
Scale 1/4 inch = 1 foot
Class 100 M

S.S. "Saramung" of Melbourne
Greenock Report No. 44/55.

Length betwⁿ Per^s 246.0
Breadth Moulded 38.4
Depth of Hold 16.4

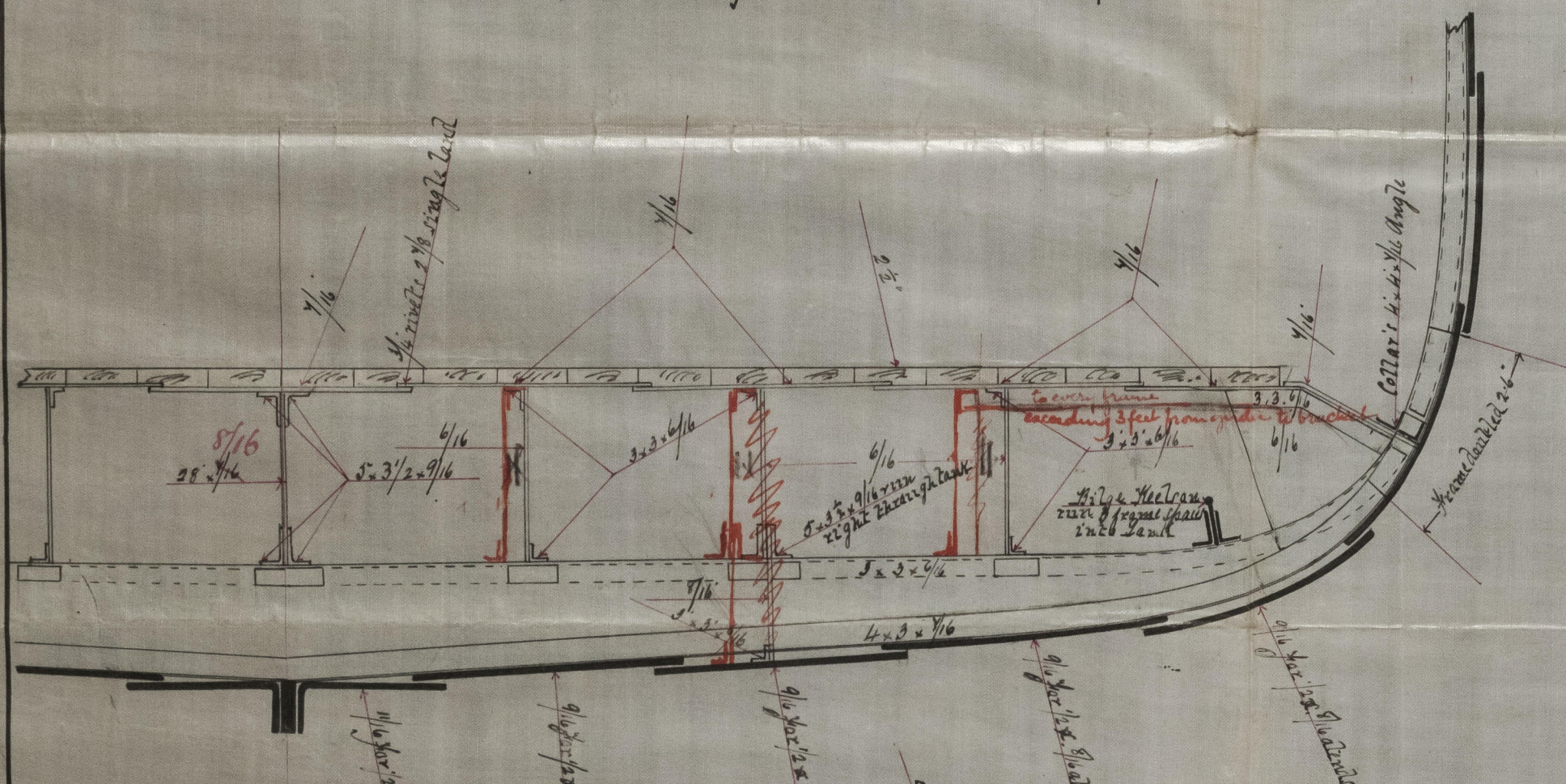
1/2 S. 51.4
1/2 M. 16.4
Q. 18.5
W. 66.9 x 244 = 16323.6 2nd 10, 15th added for equipment 16323.6
16323.6 equipment 16323.6

To be classed 100 M

Ballast Tank in fore hold 67.0
" " " " 34.6
not extending through mach^y space

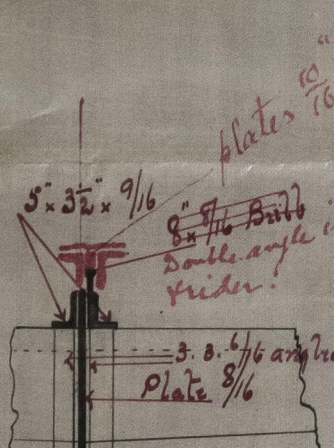
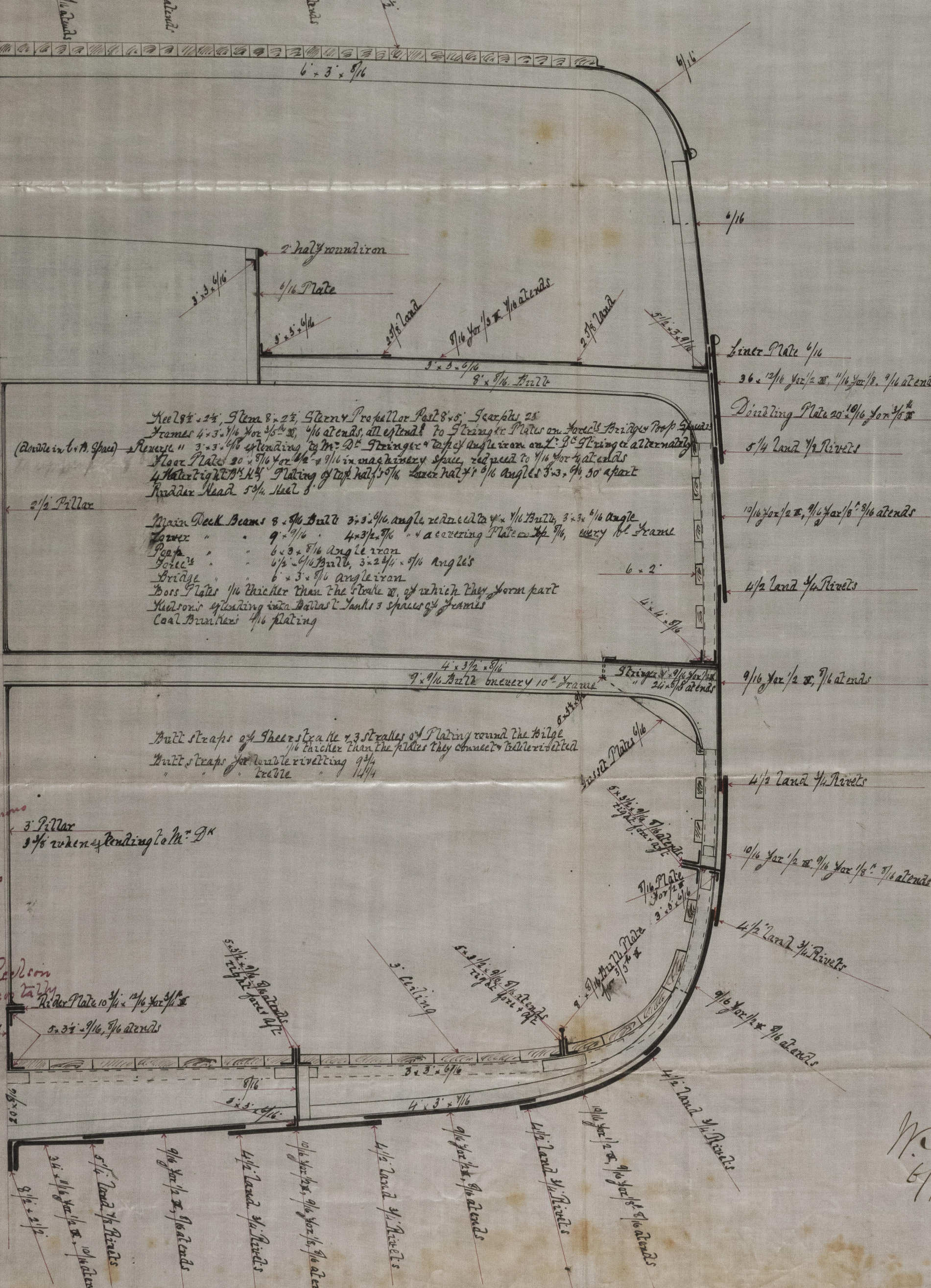
Extreme Proportions
7 to 7 1/2 Breadths
15 " 14 Depths
15.1

Length of Prop from Back of Post 46.6
" Bridge " 10th H^d to 10th H^d 85.0
" Forel^t 30.6



Equipment

1 Boiler at Stack	23 1/2
1 " " "	22 1/2
1 " " "	21
1 Steam	8
1 Hoist	4
1 " " "	2
240 Tons	19 1/2 Chain
45 " "	1 Steam



Section of Centre Plate
showing internal structure
in mach^y space

W.D.
6/9/79

