

Growth Report No 14623.

Iron 25 L 34

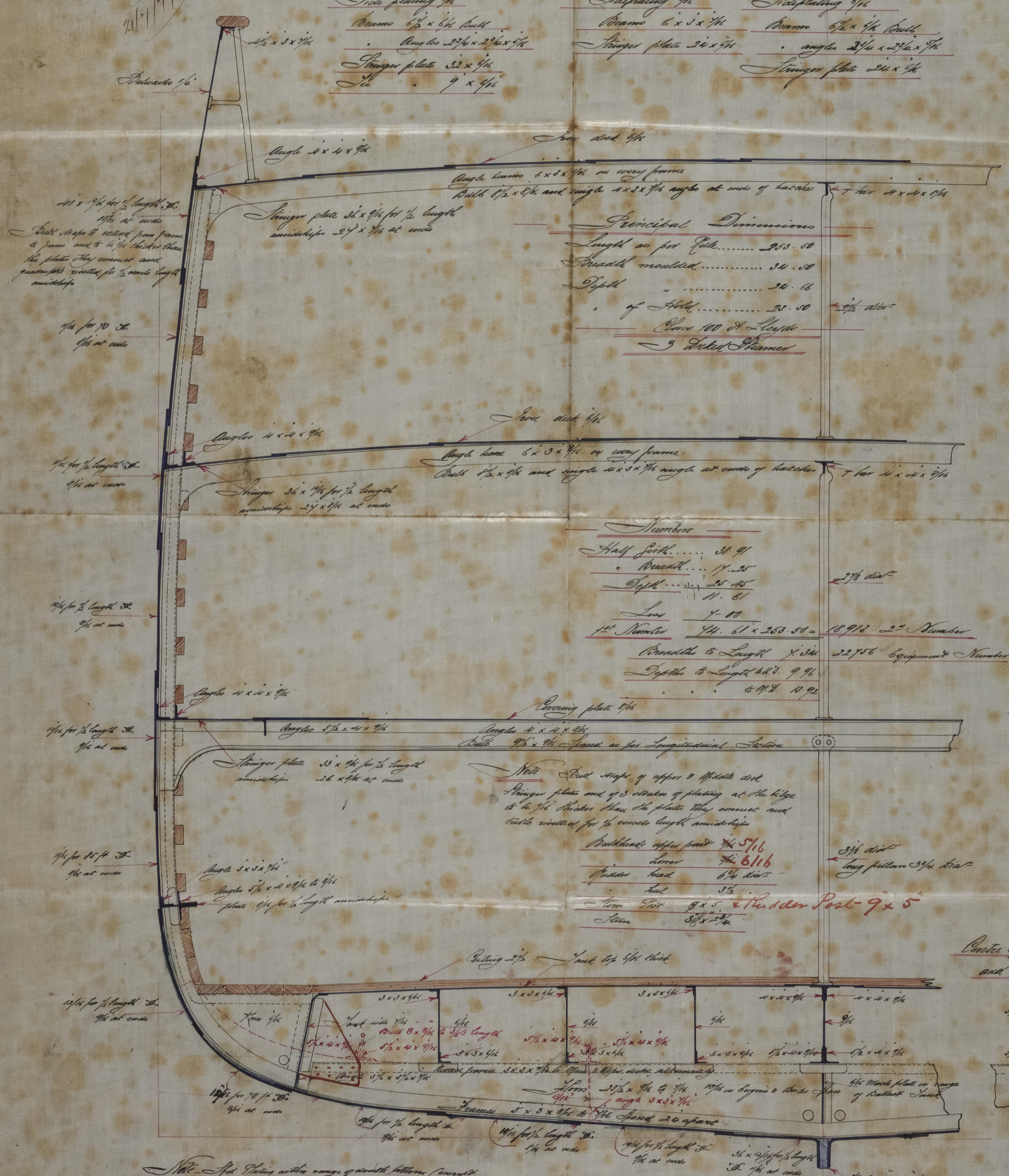


# Midship Section

## L.S. No 405

Scale 1/2" = one foot

Forward Quarter Deck 40' 0" long	Midship Deckhouse 8' 0"	After Quarter Deck 31' 0"
Side plating 1/4"	Deck plating 1/4"	Side plating 1/4"
Beams 6 1/2 x 6 1/2 built	Beams 6 x 6 x 1/4"	Beams 6 1/2 x 6 1/2 built
Angles 2 1/4 x 2 1/4 x 1/4"	Stringer plate 2 1/4 x 1/4"	Angles 2 1/4 x 2 1/4 x 1/4"
Stringer plate 3 1/2 x 1/4"		Stringer plate 2 1/4 x 1/4"
Stanchions 9 x 9 1/4"		



**Principal Dimensions**

Length as per Plan	253.50
Breadth moulded	34.50
Depth	24.66
of Hold	23.50
Clear 100 ft. Length	
3 Deck Frames	

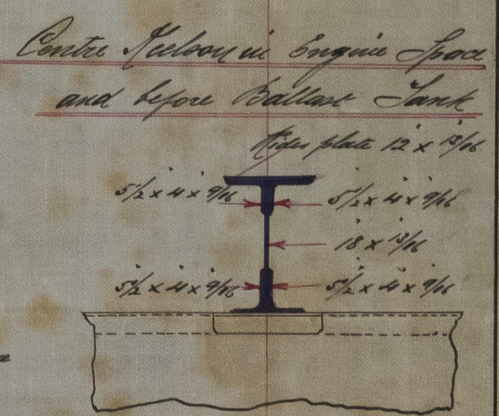
**Numbers**

Half girth	38.91
Breadth	14.25
Depth	25.46
Low	4.00
1st Number	44.61 x 253.50 = 11393
2nd Number	22956
3rd Number	22956
4th Number	22956
5th Number	22956
6th Number	22956
7th Number	22956
8th Number	22956
9th Number	22956
10th Number	22956

**Note** End straps of upper & middle deck stringer plates and of 3 struts of plating at the bilge to be 1/4" thicker than the plates they connect and built inwards for 1/2" inside length amidships.

**Buildings upper part**

Upper	5 1/2 x 1 1/2
Lower	6 1/2 x 1 1/2
Inner	6 1/4 x 1 1/2
Out	3 1/2
Iron Post	8 x 5
Iron	8 1/2 x 5 1/2



**Note** All Plating within range of gun deck bottom (except forward struts) to be reduced 1/4" in thickness.

**Notes regarding Squire space and fore Ballast Tank**

13th 67879  
24/7/09  
d's Register Foundation  
IRON 539-0102