

13.2.19

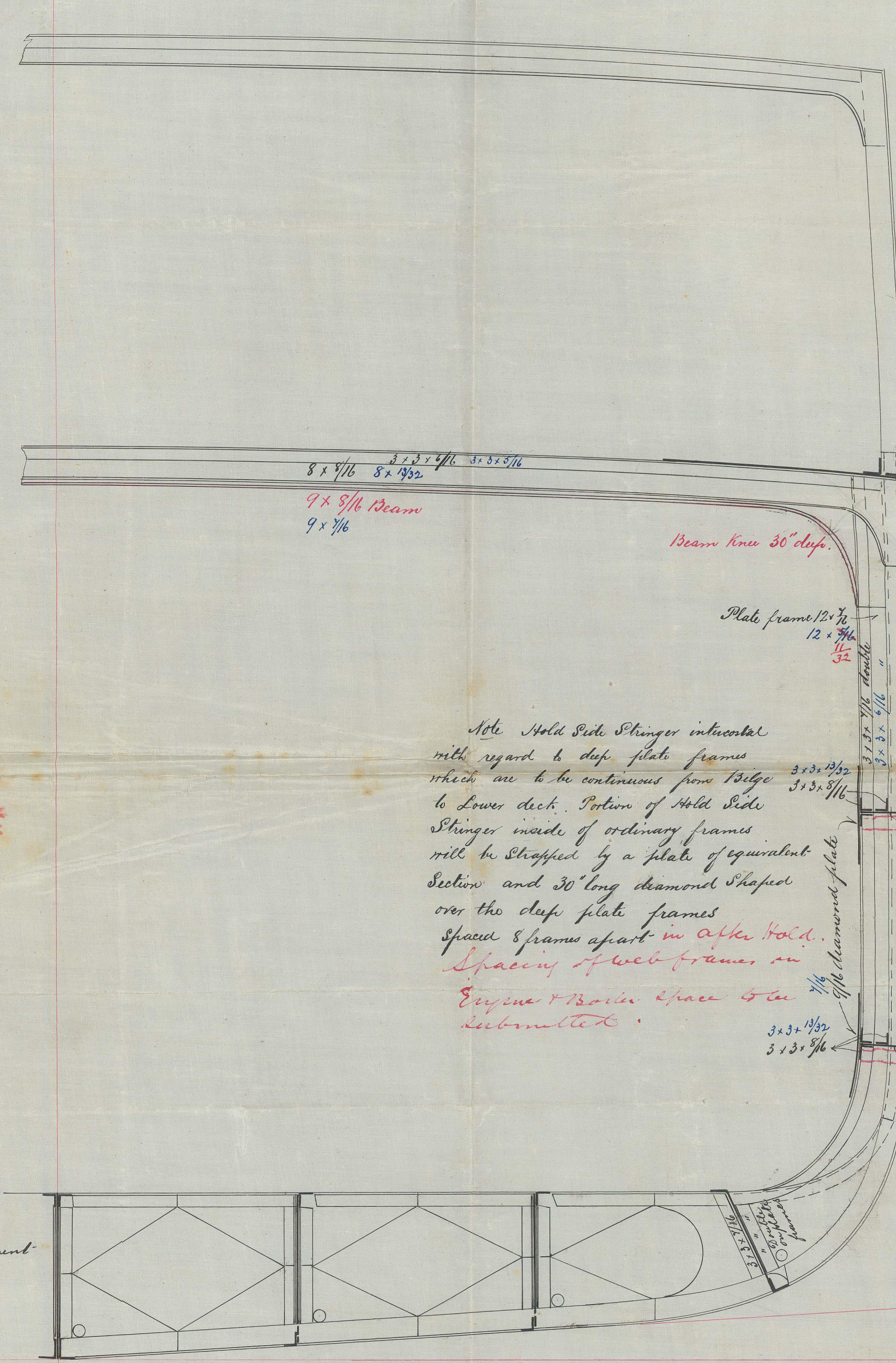
S. S. "Le Aman"  
Bluyew Report No. 5000

% Class 100 A. at Lloyds 3 Decked

Scale  $\frac{1}{2}" = 1 \text{ foot}$

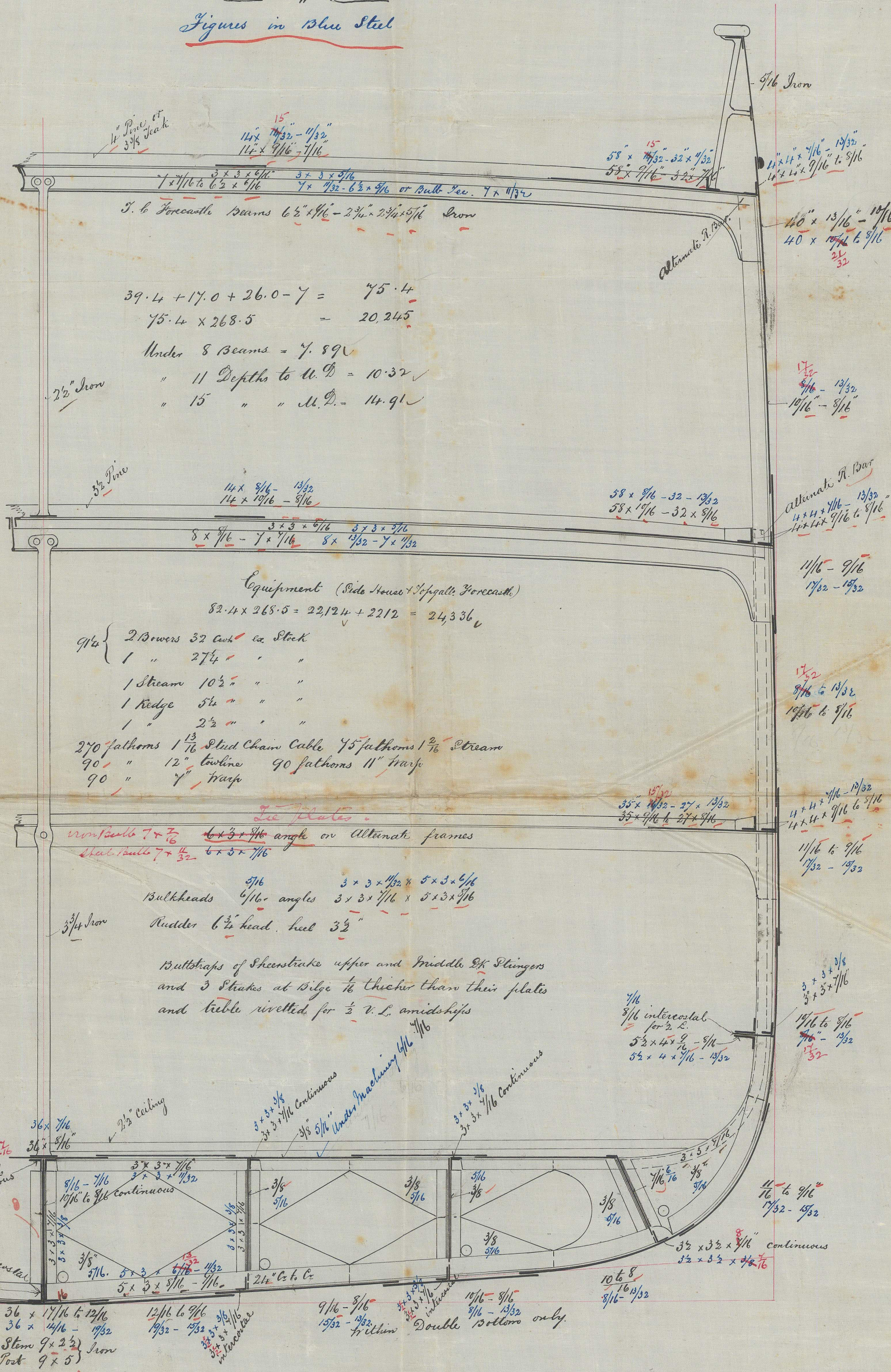
Figures in Blue Steel

A circular purple ink stamp. The outer ring contains the text "WILLIAM DENNY &amp; BROS. LTD." at the top and "DUMBARTON" at the bottom, separated by small stars. The inner circle contains the text "DRAWING OFFICE" at the top and "No. 3786" in the center.



Note Hold Side Stringer in horizontal  
with regard to deep plate frames  
which are to be continuous from Ridge to  
Lower deck. Portion of Hold Side  
Stringer made of ordinary frames  
will be stopped by a plate of equivalent  
section and 30" long diamond shaped  
over the deep plate frames  
Space 8 frames apart in after hold.  
Spacing of web frames in  
Engine & Boiler Space to be  
submitted.

This arrangement  
every 14 feet.



This arrangement  
every 4 feet

Center Nelson increased  $\frac{1}{4}$   
Kiel plate increased  $\frac{1}{2}$   
to compensate for making  
angle now irrelevant

5-4-4-4-4  
5-4-4-4-4  
9-10-7-6  
17-16

5-4-4-4-4  
5-4-4-4-4  
9-10-7-6  
17-16

Continuous

Bullheads of Sheenstrike upper and middle of Plingers  
and 3 Shakes at Silge  $\frac{1}{6}$  thicker than their plates  
and tieble rivetted for  $\frac{1}{2}$  v. l. amidships  
all.

W.D.  
12/3/79

