

1877

W. SIMONS & CO

LONDON WORKS

REN FREW.

SCALE $\frac{1}{2}$ INCH TO ONE FOOT

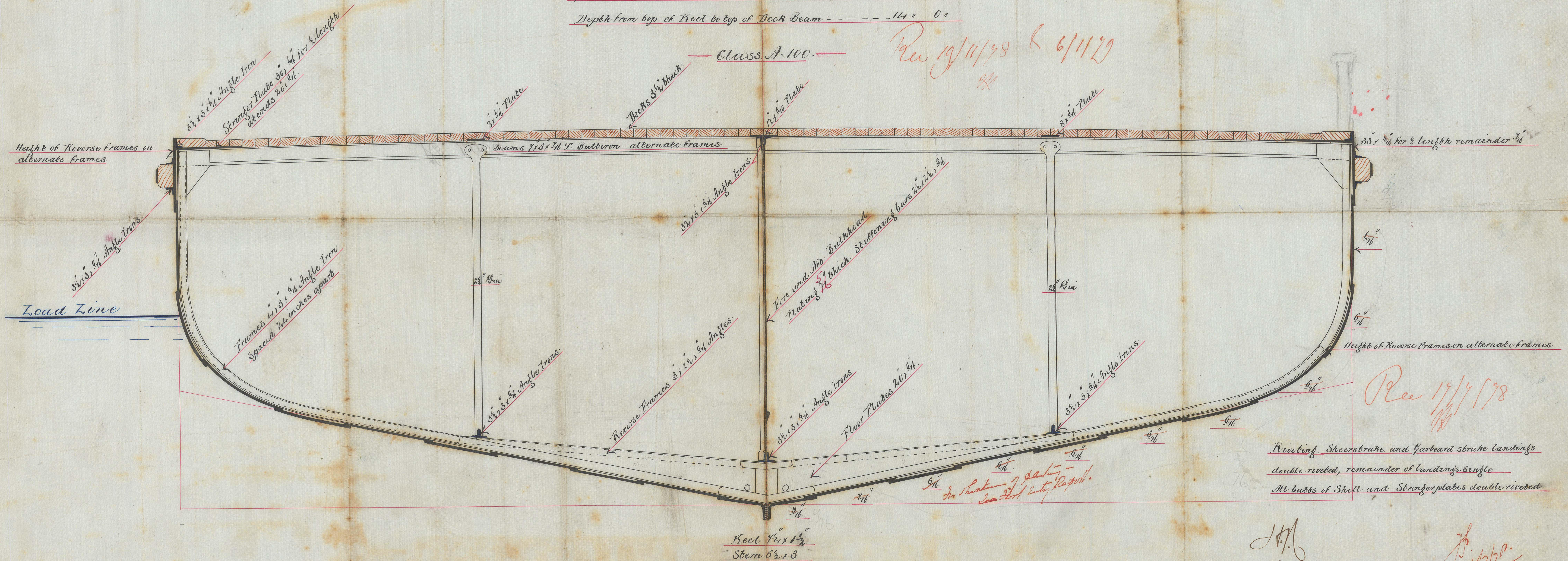
Length Per Rule ----- 129.66 Ounces

Breadth Moulded - - - - - 45" 0"

Depth from top of Keel to top of Deck Beam: - - - - 14 " 0 "

Class. A. 100.

Rec 19/11/78 & 6/11/79



Rec 19/4/98

Riveting Sheerstrake and Garboard strake landings
double riveted, remainder of landings single
M. butts of Shell and Stringer plates double riveted

17/7/78
22/7/78

*P.
10/7/70.*