

### Principal Dimensions.

LENGTH OVER ALL	256.0
Do. B. P.	248.0
BREADTH	32.0
DEPTH IN HOLD	12.6
Do. MOULDED	19.7
TONNAGE, GROSS	
Do. NET	

Class 100 A Lloyds

SCALE.— $\frac{1}{2}$  INCH TO 1 FOOT

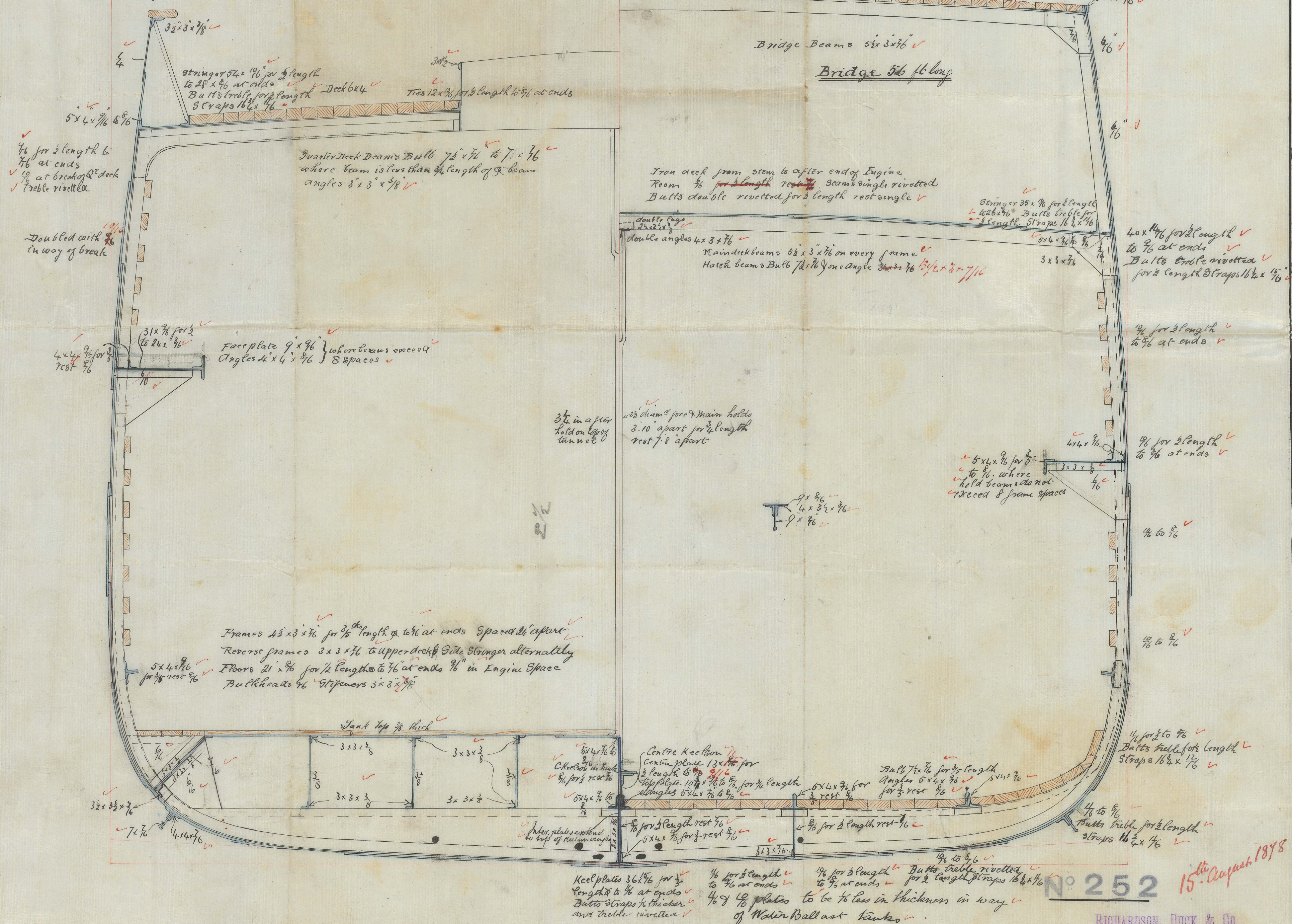
Numbers for Scantlings

$\frac{1}{2}$ Breadth	16.0	✓	Length 248.0	✓	
Depth	20.3	✓		1.5	✓
Girth	32.8	✓		246.7	
	68.11				

$\frac{24 \times 58}{1699} \times 6892 = 16994$  Scantling Number ✓  
 $\frac{1699}{18693}$  Equipment Number ✓

Breadths in Length... 7.7 ✓  
Depths " do... 12.1 ✓

*S. S. Gombeline Report No. 4167*



1/6 N° 252

RICHARDSON, DUCK & Co.

Iron Ship Builders.

STOCKTON-ON-TEES

Aug 13<sup>th</sup> - 18

Flord's

1R0534-0028

Foundation