

# MIDSHIP SECTION

OF

N<sup>o</sup> 166 S.S.

Scale 1/2 Inch to one Foot.

To Class 100 A 3 Deck Rule

270'-0" x 33'-6" x 24'-0"

Rev 17/6/78  
JP

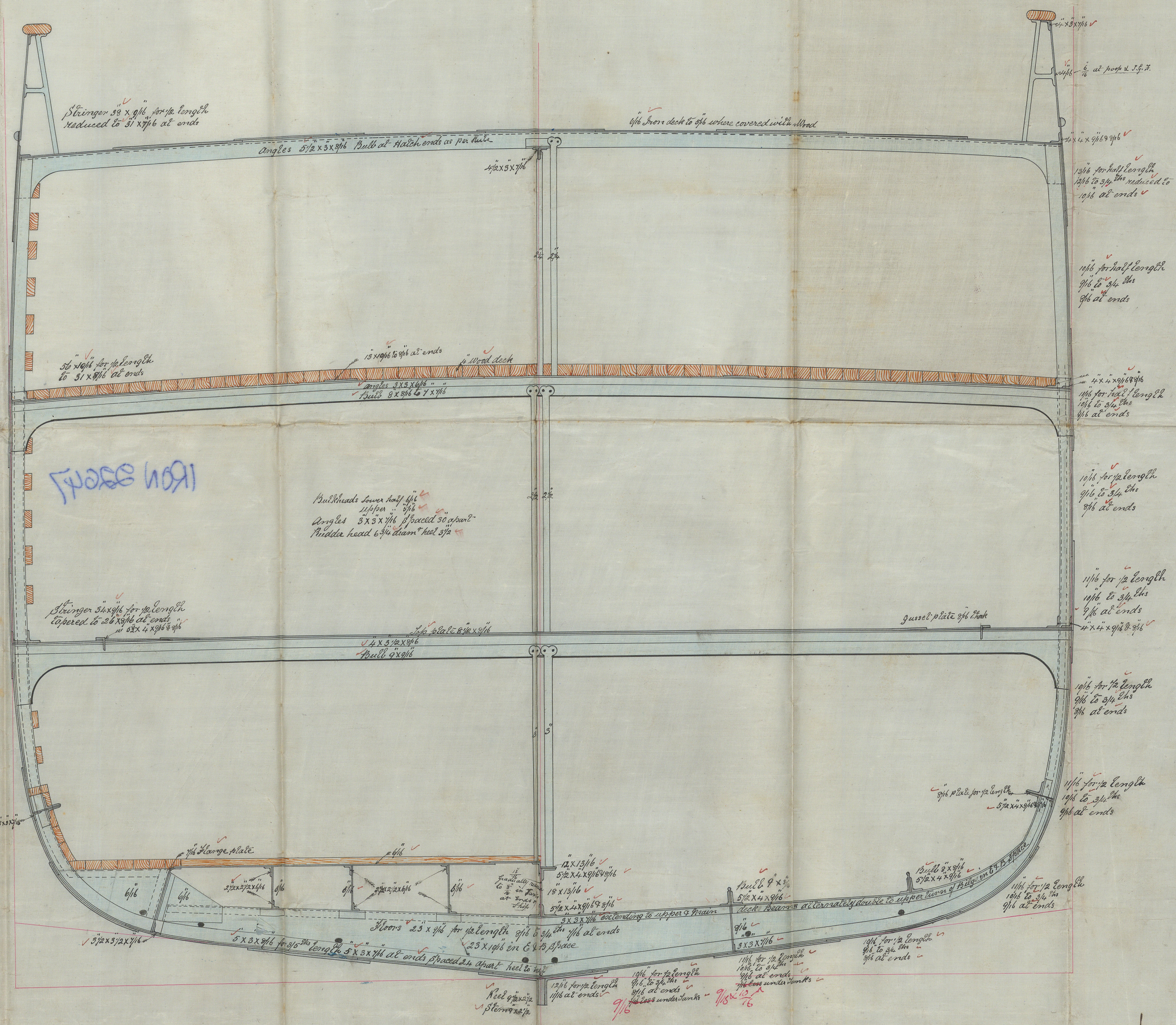
J.G. H. Brans Bulb 6 1/2 x 6 1/2  
Angles 3 x 2 3/4 x 5 1/2  
Stringer 2 1/2 x 6 1/2  
Angles to 3 x 3 x 7 1/2  
Prop & Bridge Beams 6 x 3 x 7 1/2  
Stringer 2 1/2 x 6 1/2  
Bridge & J. H. S. 10 x 6 1/2

1/2 full	38'-0"		
1/2 breadth	16'-8"		
Depth	24'-0"		
Floors	1'-11"	1st 910	2nd 910
	80'-7"	73	18700
	7'-0"	76	21700
	73'-4"	x 268'-6" = 19757	

Dimensions  
Length from after part of stern to fore part of post 268'-6"  
Breadth moulded 33'-3 1/2"  
Depth to skin 25'-11"  
1/4 to 15 Depths to length at main deck  
1/8 to 8 1/2 Breadths to length  
10 to 11 Depths to upper deck



S.S. "Saxon Monarch," West Hartlepool Report No. 416.



Main  
Bulkheads of upper deck stringer  
Shut plate and of line strakes  
of Plating at the bilges for  
half length. Amidships to be 1/2 thicker  
than the plates they connect and  
table riveted.

17/6/78



115 274

116. 27. 11. 11. 11. 11.

D. D. Jackson Manuscript, New Hampshire State Archives

IRON 22647