

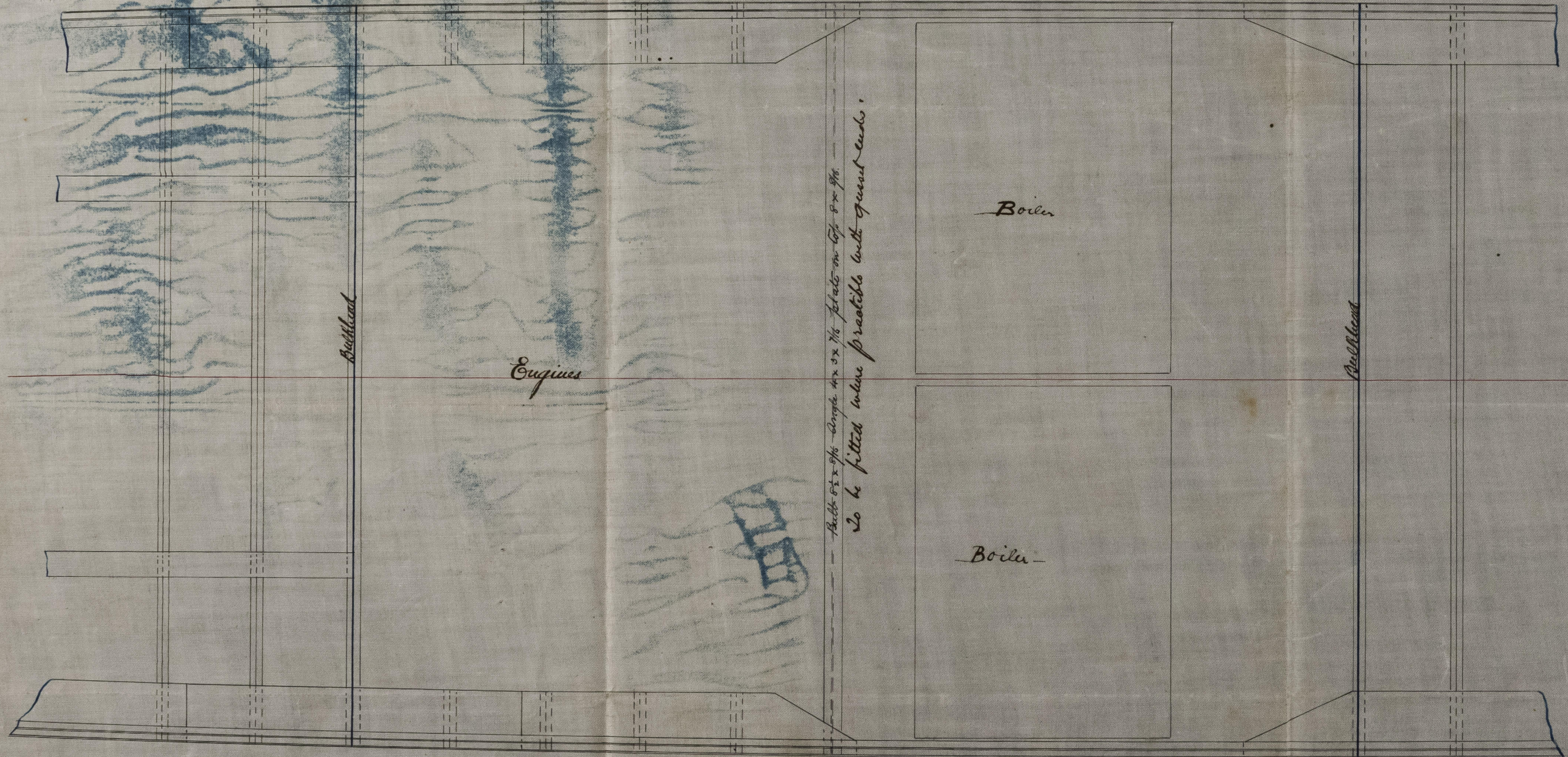
2/8/78

Plan showing Treen Stringer cut for Boilers.
 Scale $\frac{1}{4}$ " = one foot

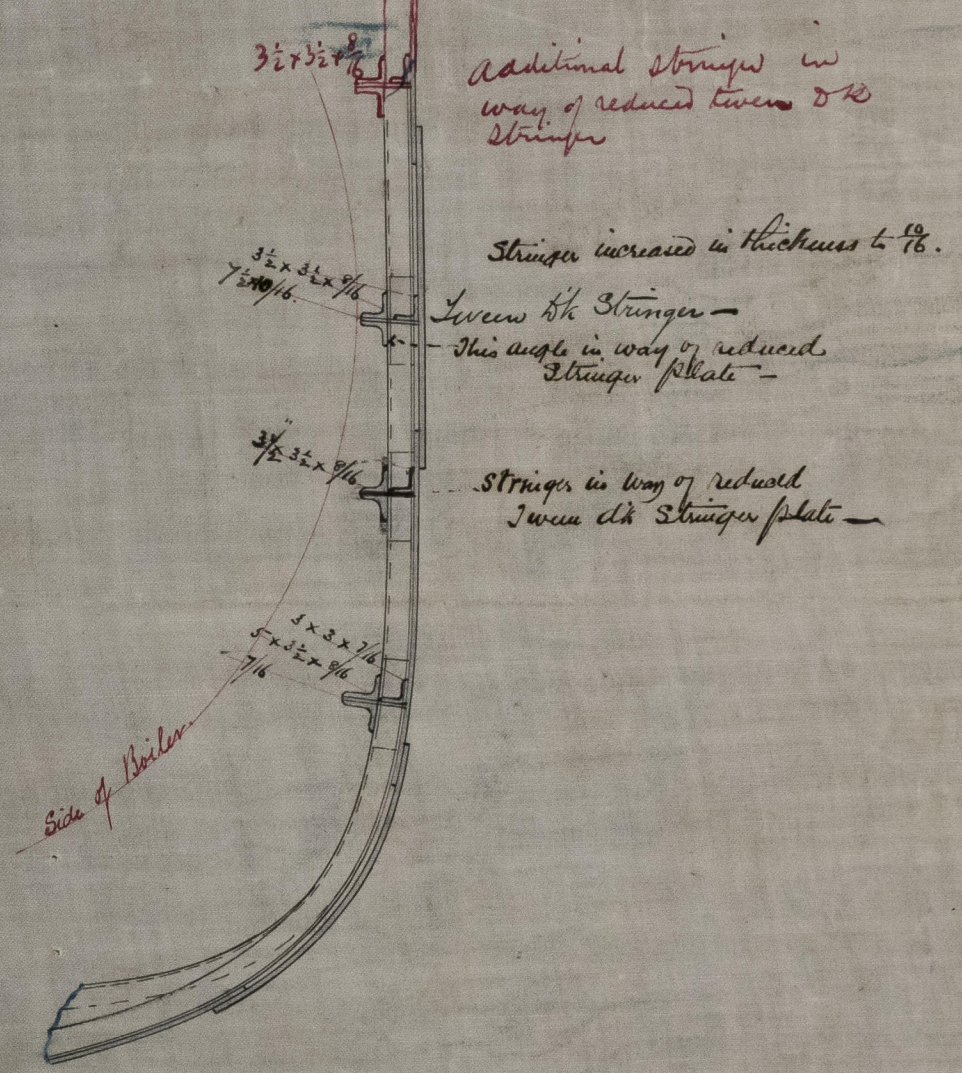
No 150. S.S. "Lady Olive"
 Rev 1/8/78

Section showing compensation for Treen Stringer.
 Scale $\frac{1}{2}$ " = one foot.

Glasgow Report No. 4785



Boiler 8' x 5' 1/2" Angle 4' x 5' 1/2" plates on top 8' x 9' 1/2"
 to be fitted where practicable with great ends.



W.D.
 3/8/78

A. & J. INGLIS,
 Engineers and Shipbuilders
 GLASGOW
 26th July 1878.
 Register
 Foundation

IRON 532-0077