

S.L. Annandale
Report No. 4061

MIDSHIP SECTION

Length over all	274.6
Between Posts	264.5
Breadth extreme	33.4
Mounted	33.2
Depth	20.0 1/2
of Hold to floors	19.0
Class 100 A1	10000
	18700

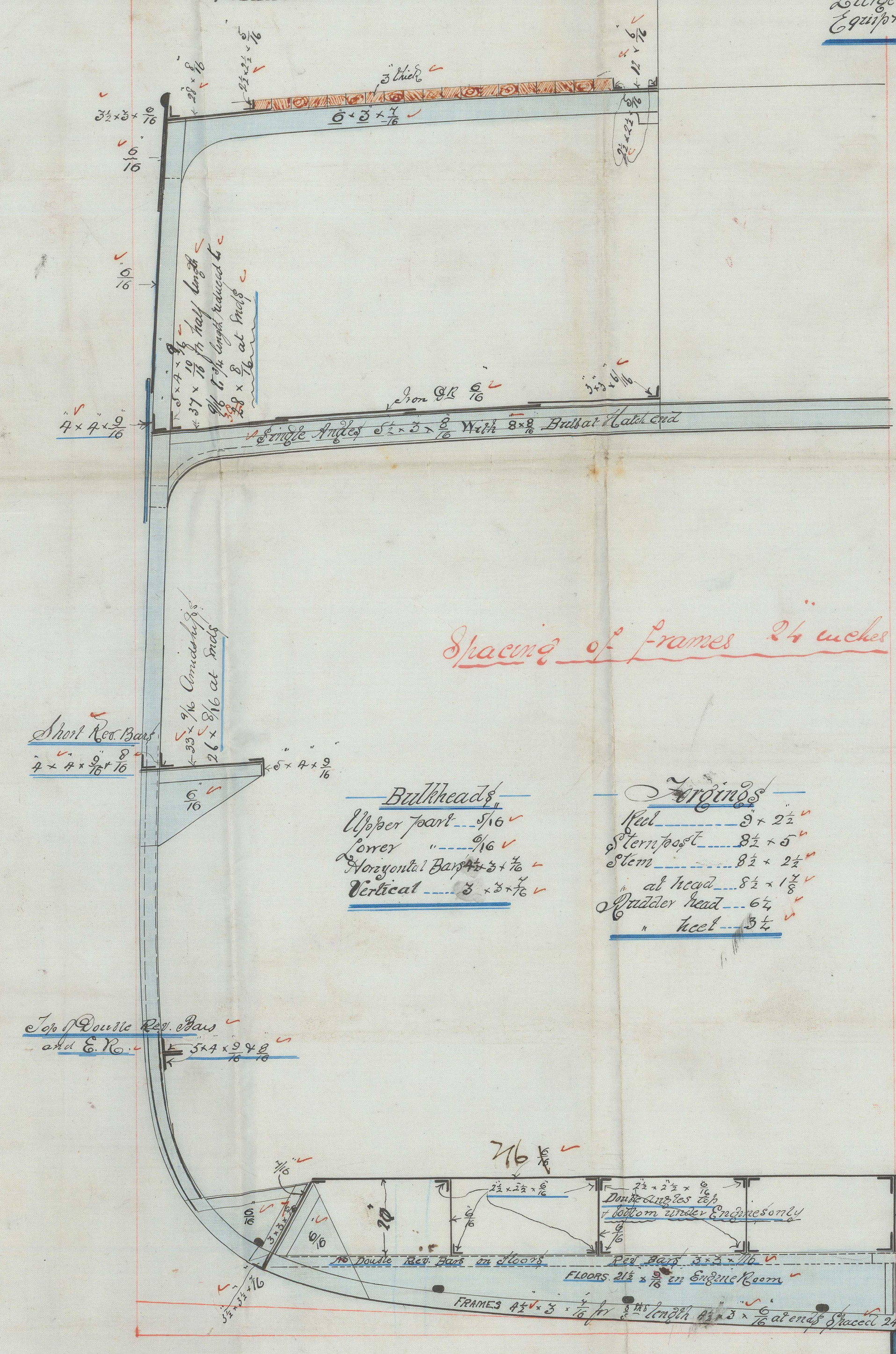
Scale 1/2" = 1 foot

Length for Numbers	263.0
Mounted Breadth	18.4
Depth to Deck	20.2 1/2
Small Numbers	20.1 1/2
Large Numbers	18.602
Equipment	10528

1 1/2 - 8 Breadth to Length
 12 - 13 Depth

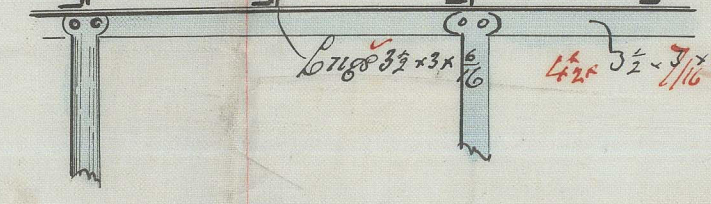
Rev 2/3/28 & 13/3/75
JP

Section thro. Engine Room



Bulkheads	Girders
Upper part 1/16	Mid 3 x 2 1/2
Lower 1/16	Stem post 8 1/2 x 5
Horizontal Bars 3 x 1 1/2	Stem 8 1/2 x 2 1/2
Vertical 8 x 3 x 1/2	at head 8 1/2 x 1 1/2
	Quicker head 6 1/2
	heel 3 1/2

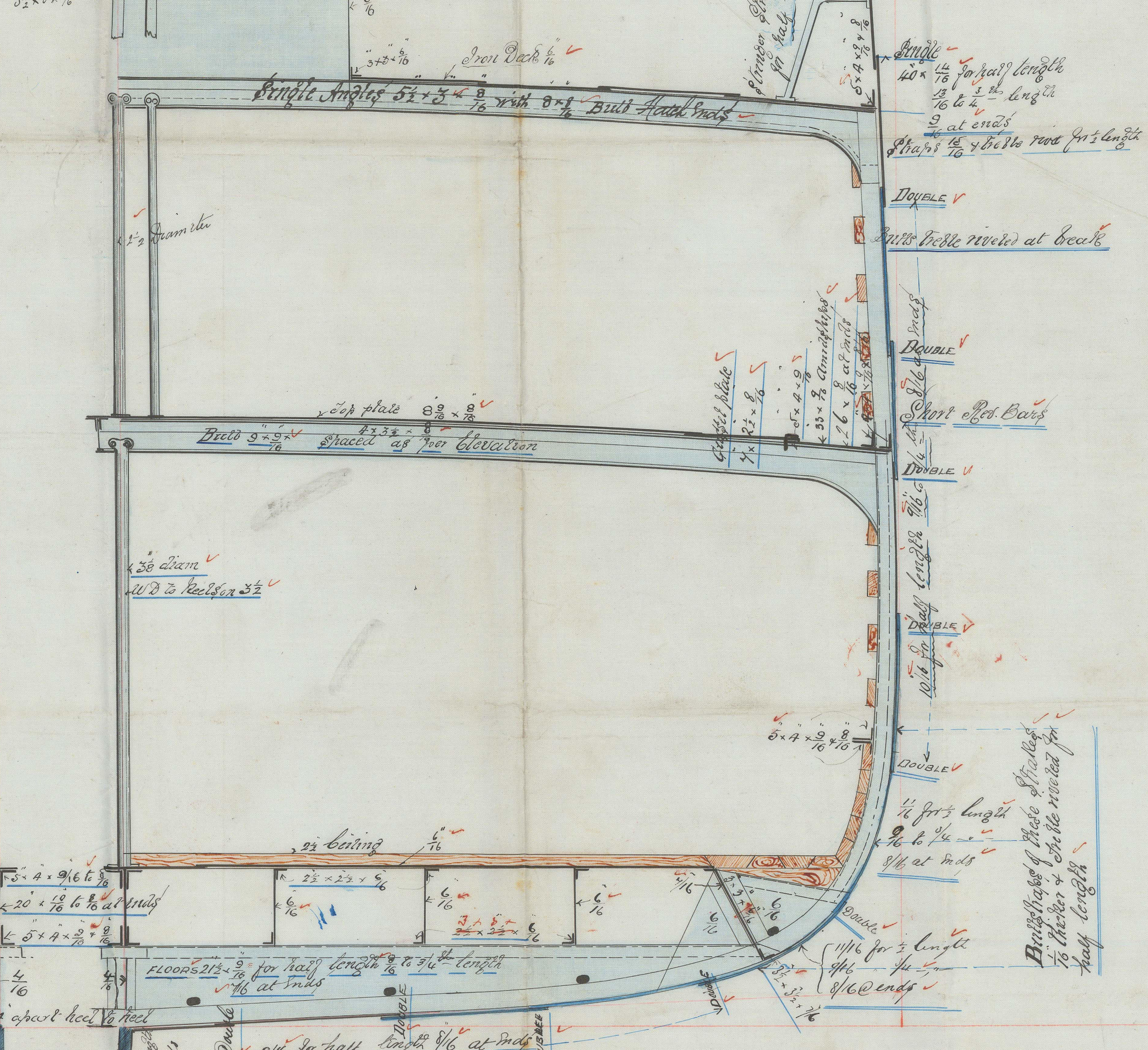
Section of Deck at Centre



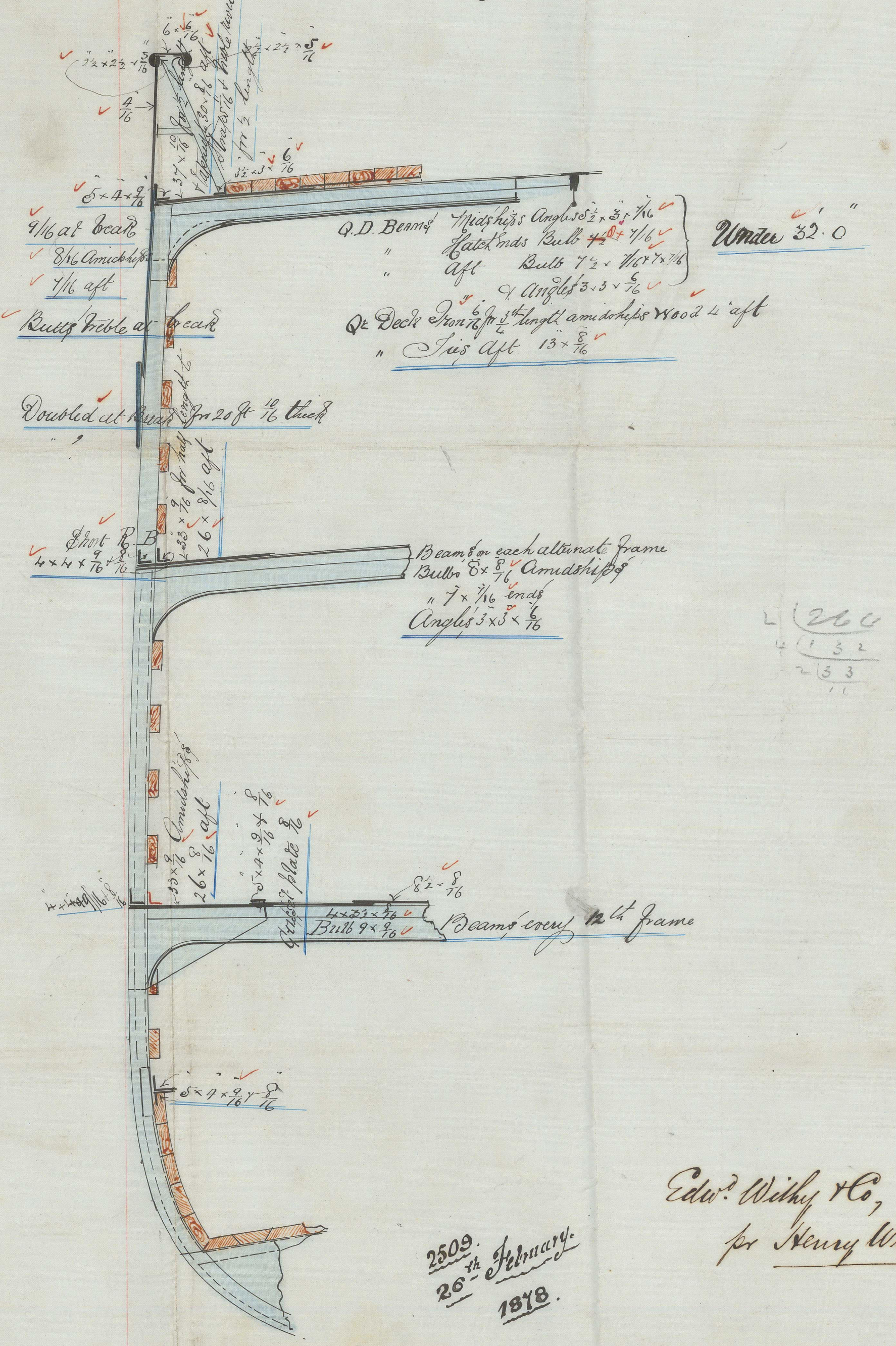
T. J. Forecastle

Beams built	8 1/2 x 3/4
Angles	2 1/2 x 2 1/4 x 1/4
Stringer plate	2 1/2 x 1/4
etc	9 x 1/4
Gravels	3 1/2 x 3 x 1/4
Waterway	2 1/2 x 2 1/2 x 1/4
Shell plates	1/4

Section thro. Fore Hold



Section thro. After Hold



Edw. W. W. Co.,
for Henry W. W.

2509
 26th February
 1878

No 75 SS

21806

CTION

54. 45

204. 2

4. 22

IRON 530 - 0025. 22

20. 02

0. 01

10000
18400

14001

12-8-13
12-8-13

204. 01

Rev 2/3/28

10. 41

20. 02

22. 22

20. 11

120. 2

18002

20028

W. J. Gordon

Beatty Bros

W. J. Gordon

W. J. Gordon

W. J. Gordon

W. J. Gordon

W. J. Gordon

W. J. Gordon

W. J. Gordon

W. J. Gordon

W. J. Gordon

W. J. Gordon

W. J. Gordon

W. J. Gordon

W. J. Gordon

W. J. Gordon

W. J. Gordon

W. J. Gordon

© 2021

Lloyd's Register
Foundation

