

N^{rs} for Scantlings

Length 304.25 ✓
 $\frac{1}{2}$ Breadth 19.75 ✓
 $\frac{1}{2}$ Girth 40.00 ✓
 Depth to UD 26.5 ✓
 do. MD 19.37 ✓ $84.25 - 7$ ✓
 No for Frames &c 77.25 ✓ 304.25 ✓
 No. Slating 23508 ✓
 No. Equipment 28196 ✓
 Proportions
 Length to Depth $\frac{304.25}{26.5} = 11.48$ ✓
 do. " " $\frac{304.25}{19.37} = 15.70$ ✓
 do. Breadth $\frac{304.25}{35.5} = 8.57$ ✓

Midship Section

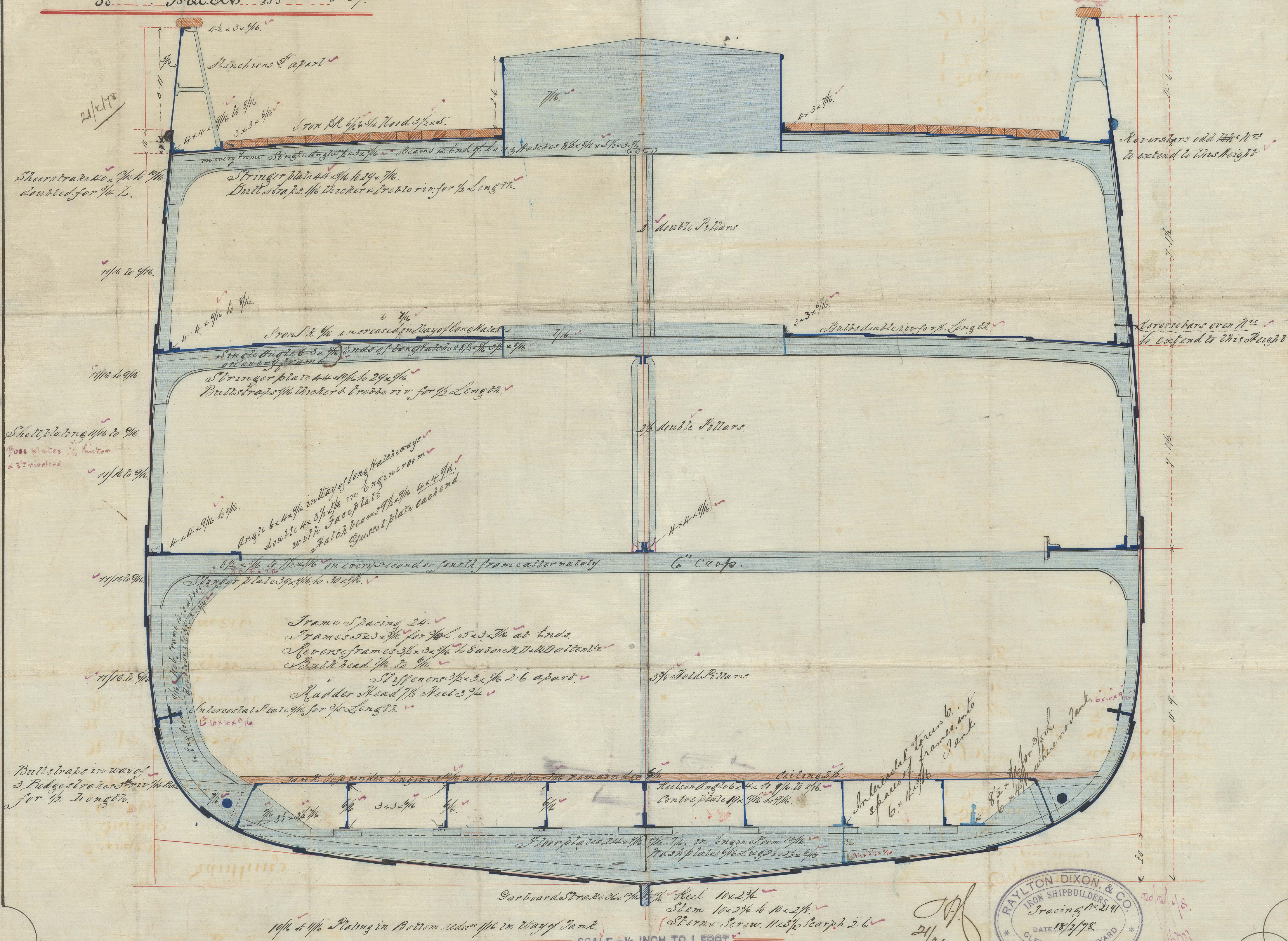
Rec 21/2/78 & 16/3/78 & 1/8/78

IRON SCREW STEAMER

DIMENSIONS.		FEET	IN.
LENGTH OVER ALL			
Do. L.P.		306.	0 ✓
BREADTH		35.	6. ✓
DEPTH IN HOLD		24.	6. ✓
Do. MOULDED		26.	0. ✓
TONNAGE O.M.			
HORSE POWER			
CLASS	107 M. Lloyds. Double Bottom.		

Equipment

2	Bovers	(exc. 3 to 4)	34 cut	✓
1	do	do	29	✓
1	Stream	1 Stock knobby	13 1/2	✓
1	Kedge	do	6 3/4	✓
1	do	do	3 1/4	✓
2	YO	5 x 1 3/4	1 1/4	✓
75	Sailors	1 1/2	Stream chain	✓
90	5 x 2 1/2	12 ^{inch}	Towline	✓
		11 ^{inch}	3 Waps	✓
		7 1/2		✓



SCALE.— $\frac{1}{2}$ INCH TO 1 FOOT

RAYLTON DIXON, & CO.
IRON SHIPBUILDERS
Tracing No 2191
DATE 18/2/78
CLEVELAND DOCKYARD
MIDDLESBROUGH

1R0N530-0021