

# Iron S.S. "Elsie Ker" report No 11,989

Oct 18.  
1897.

Screw Steamer No 233 & 237

Three Decked Vessel

Dimensions 238.5' x 31-10' x 22-0' hold

Monkey Forecastle

Class 100 A

Rec 20/10/77

Waterballast in Fore  
and After Hold

Proportions

over 10' Depths in Length

7.49 Breadths in Length

14.06 Depth in Length Middle Deck

Scale 1/2" = 1 foot

1/2 Girth - 35.46'

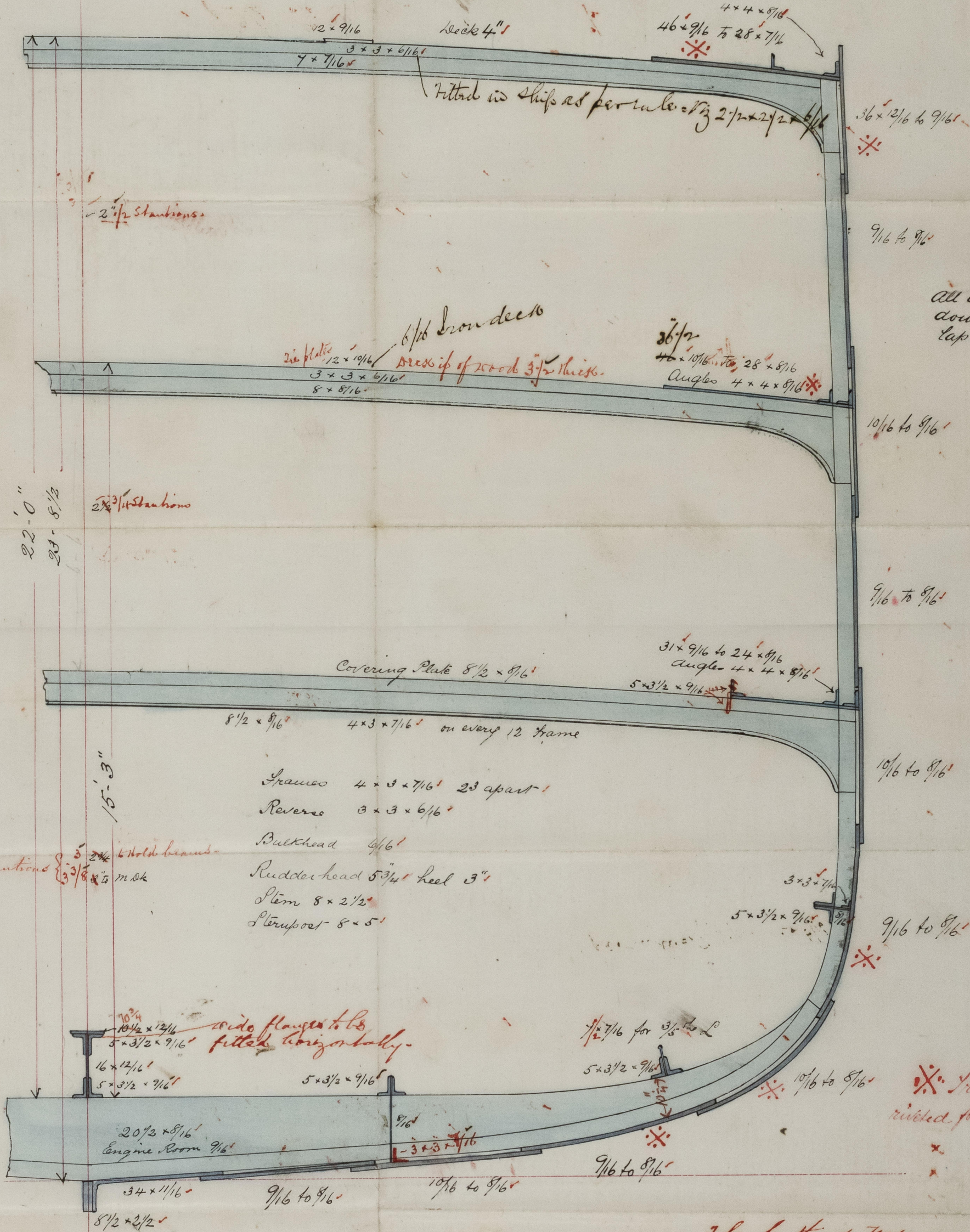
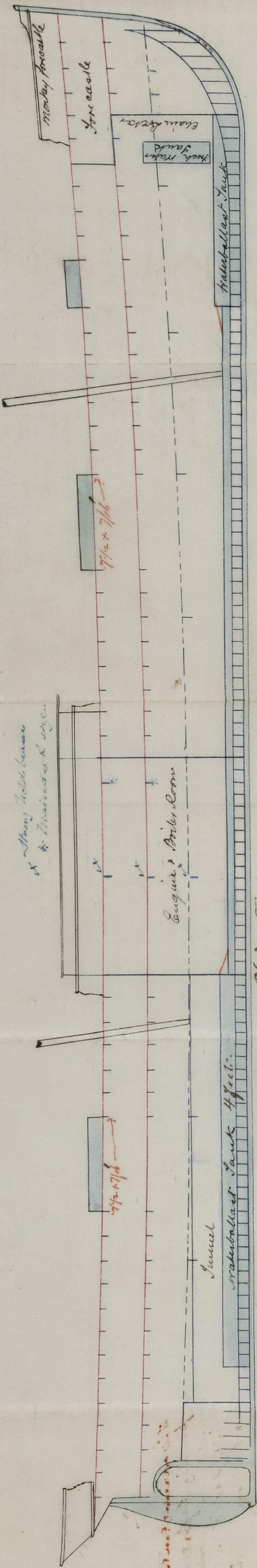
1/2 Breadth - 15.91'

Depth - 23.62'

74.99'

7.99'

67.99' x 238.5' = 162.15'



The hull of upper and middle  
deck stringer plates, the sheerstraps  
and three strakes of plating at the  
bilges to be triple riveted with  
butt straps 1/8" thicker than the  
plates they connect, for half  
vessel's length amidships.

1897  
20/10/77