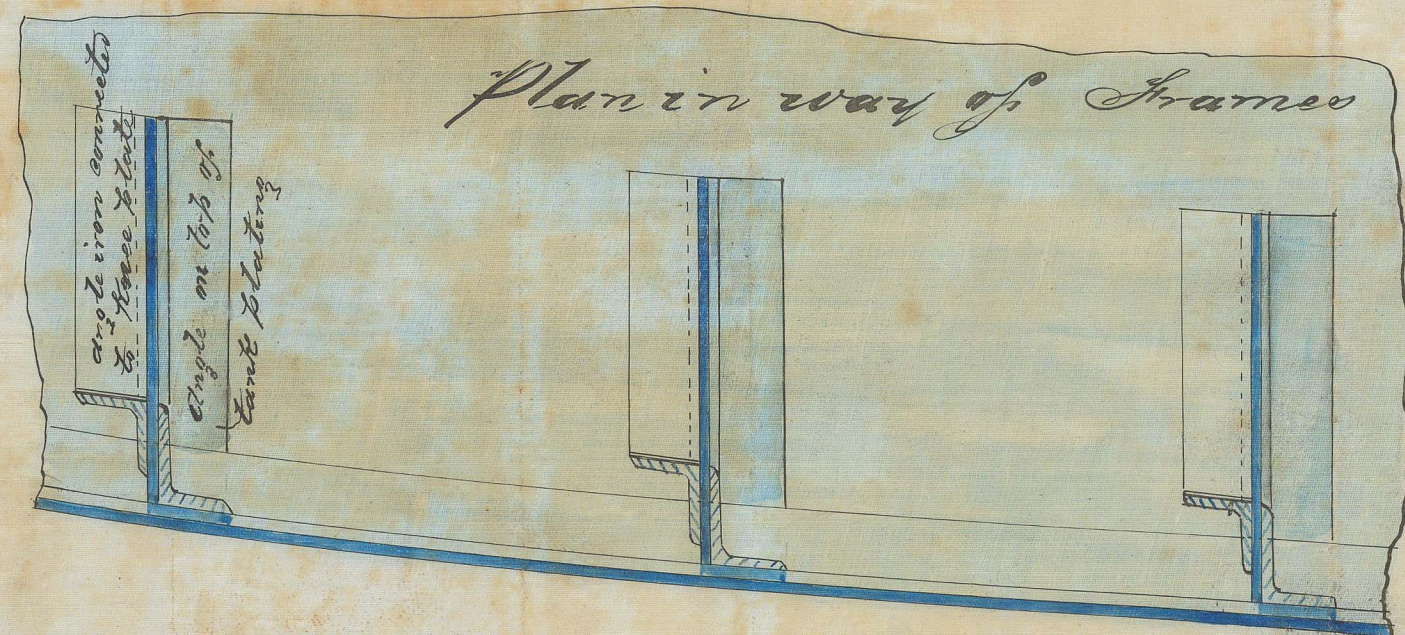


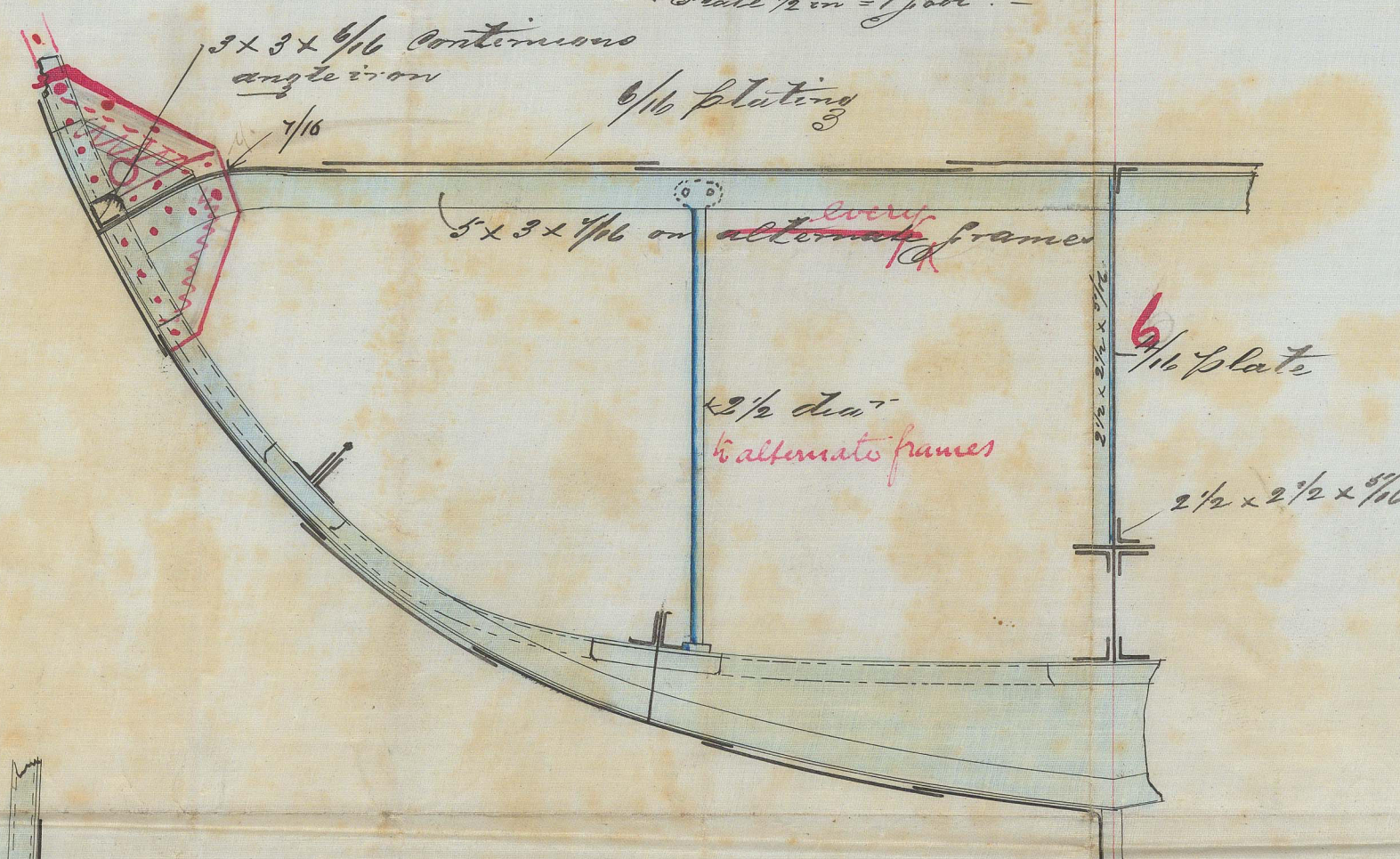
Arrangement  
of Water Ballast Tanks  
of Screw Steamer — **AUGUSTUS** —  
No. 221.

Glasgow Report No. 4622

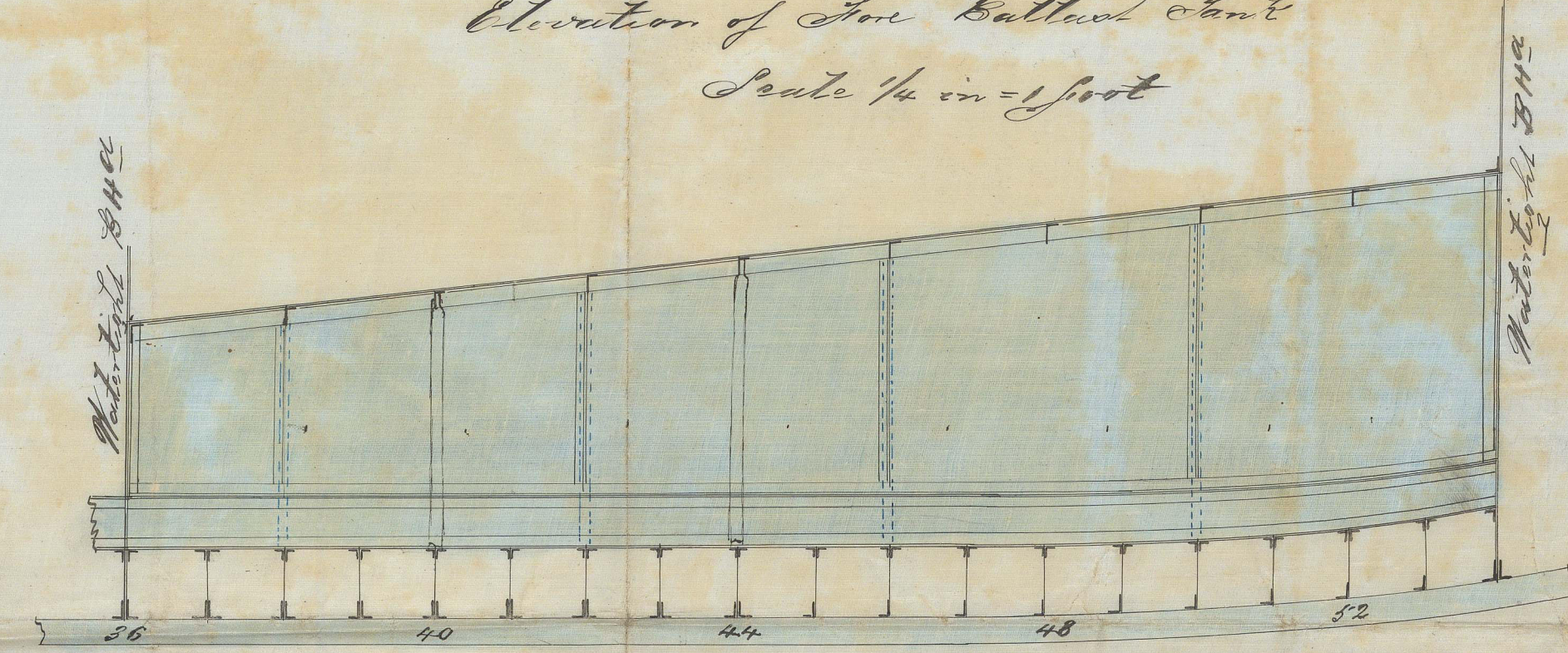
Scale 1/2 inch = 1 foot



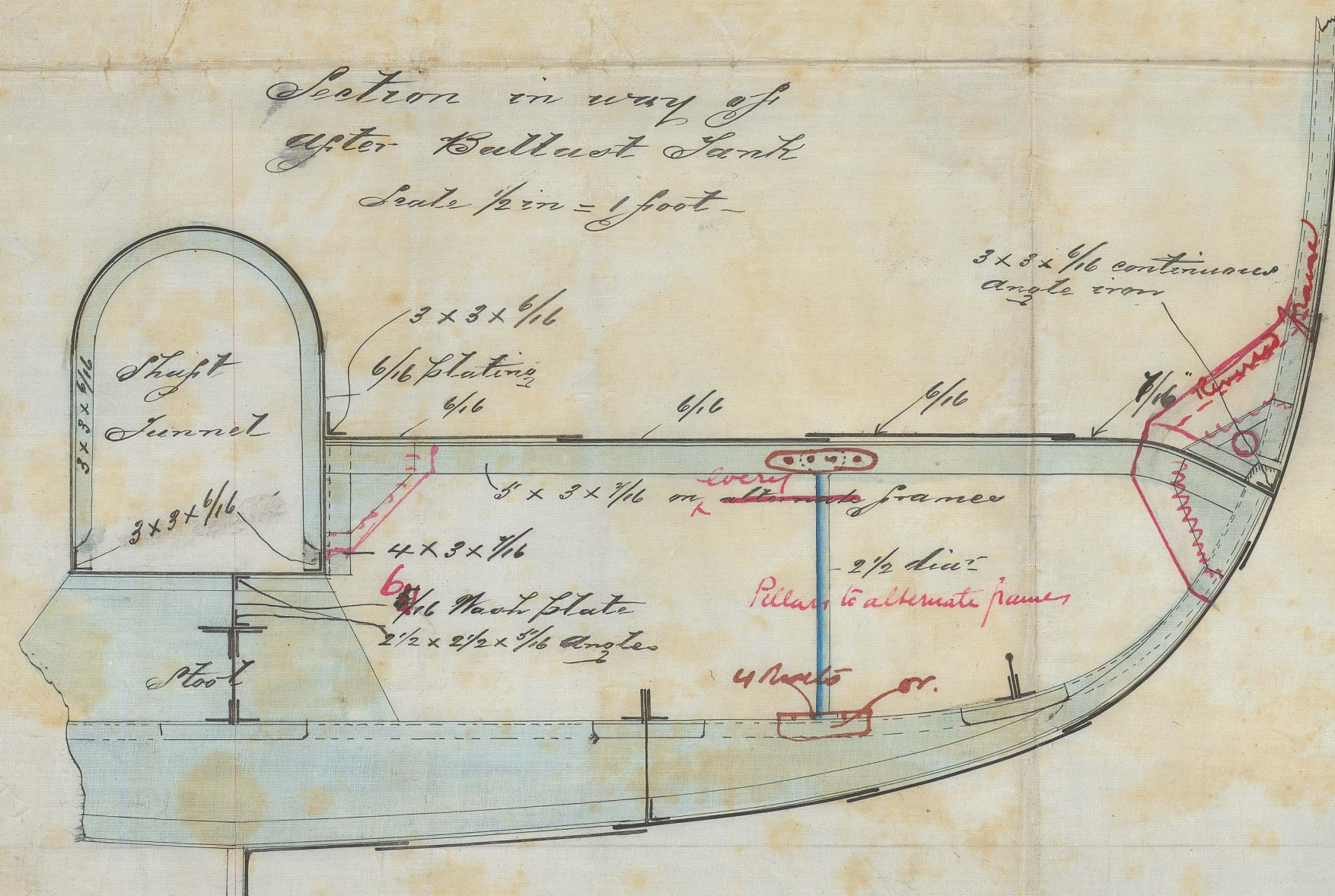
Section in way of  
Fore Ballast Tank  
Scale 1/4 in = 1 foot



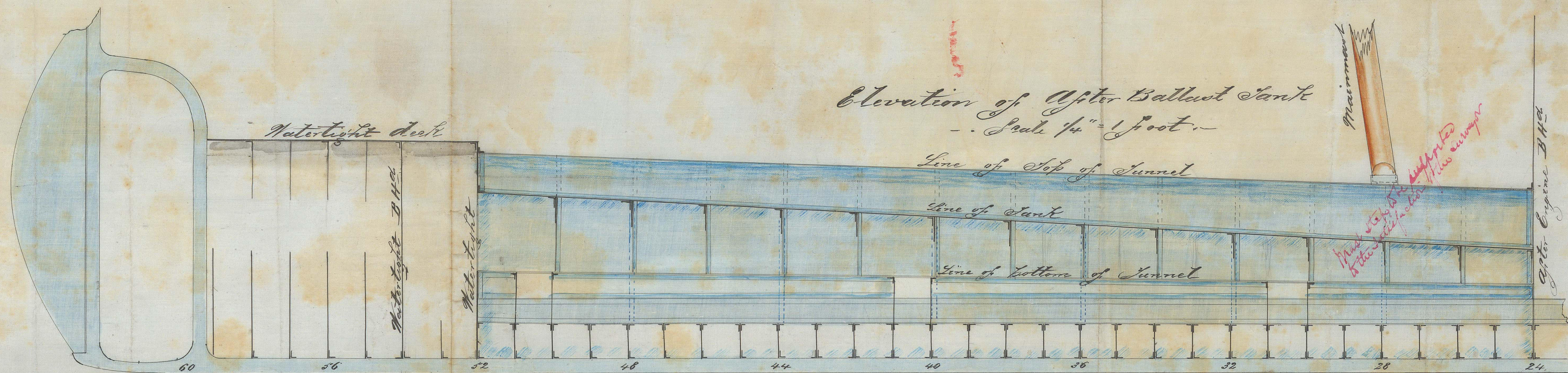
Elevation of Fore Ballast Tank  
Scale 1/4 in = 1 foot



Section in way of  
after Ballast Tank  
Scale 1/4 in = 1 foot



Elevation of After Ballast Tank  
Scale 1/4 in = 1 foot



ALEXR STEPHEN & SONS  
SHIPBUILDERS AND ENGINEERS  
GLASGOW.  
DRAWING No. 896  
24/1/77