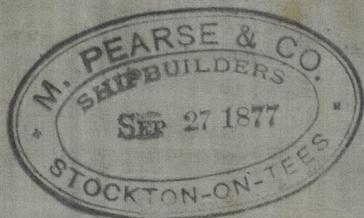


1.10.77 12 to 13 depths to length ✓
7½ to 8 Breadths " ✓



— OF —

Nº 160 S S

$$230'.0'' + 29'.0'' + 17'.0'' \quad \checkmark$$

Class 100 A

Rec. 11/10/44 & 10/10/44

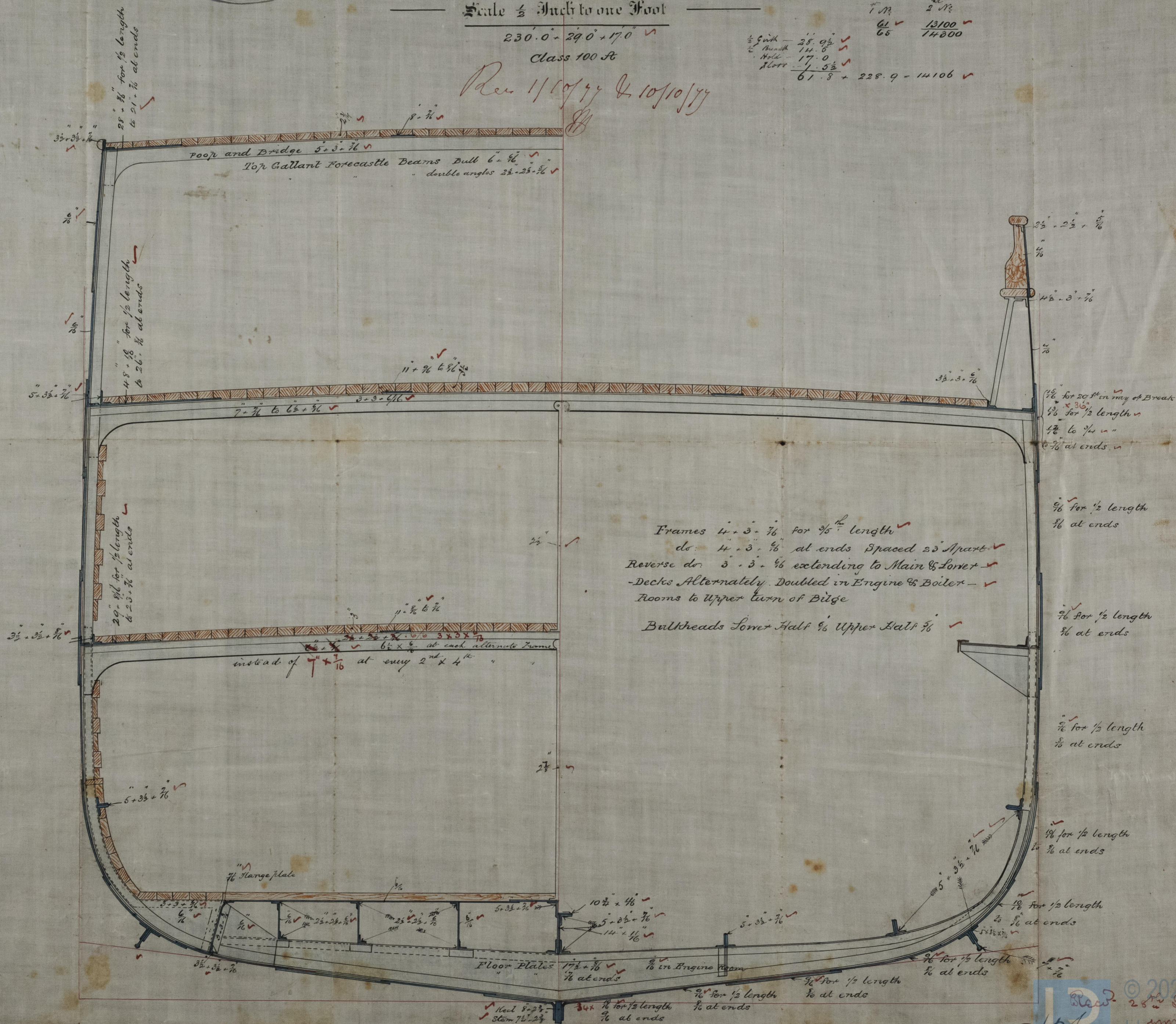
1 N_2 2 N_2

61 ✓ 13100 ✓

65 14000

$\frac{1}{2}$ Girth — 28.9 $\frac{1}{2}$ ✓
 Breast — 14.6 ✓
 Hock — 17.0 ✓
 Flare — 1.5 $\frac{1}{2}$ ✓

 61.8 + 228.9 - 14106 ✓



IRONS26-0055

25th Sept 1671.

8 Oct 1877.