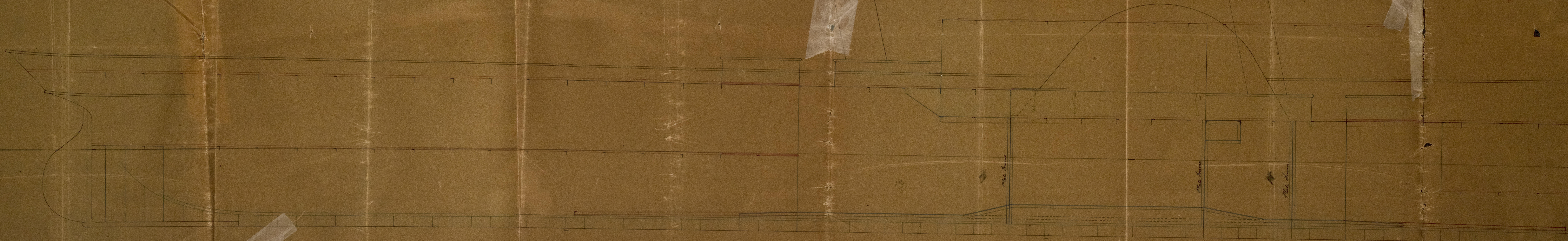


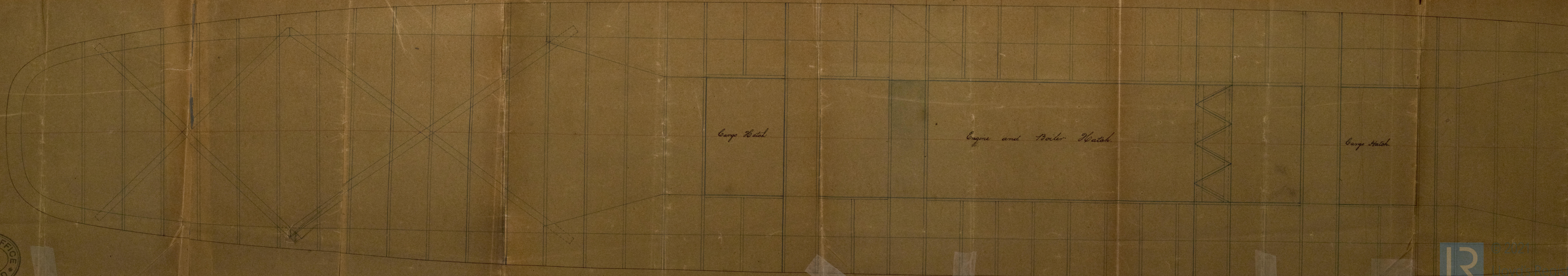
22/3/77

Steel Tugboat BRIGHTON Glasgow Report No. 4624



Ref. Deck Stringer & Plating to here

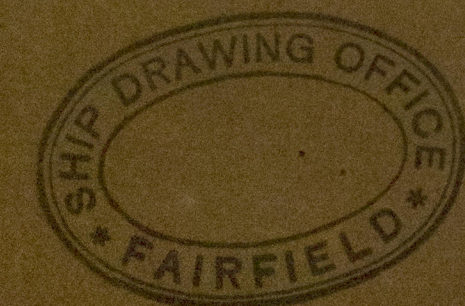
Upper Deck



Cargo Hatch

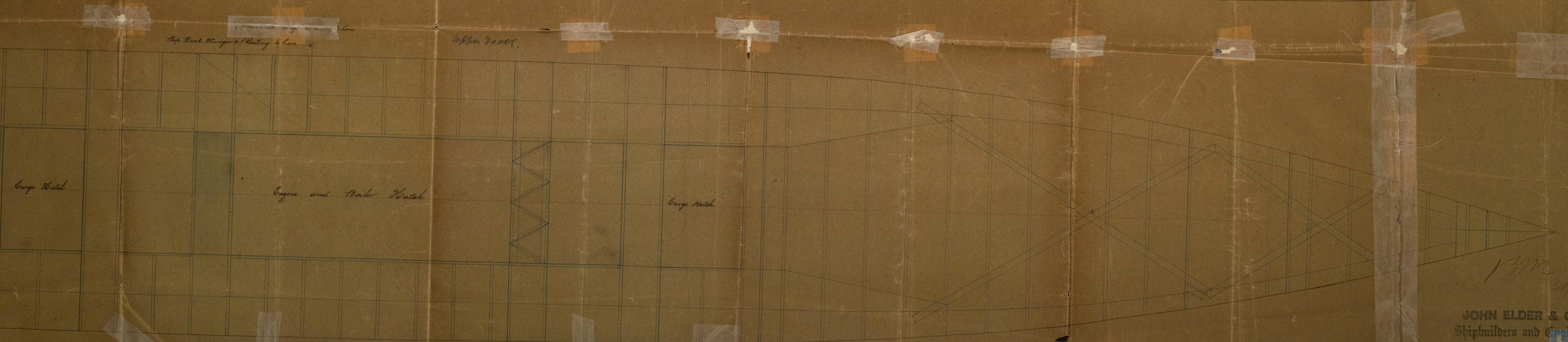
Engine and Boiler Hatch

Cargo Hatch



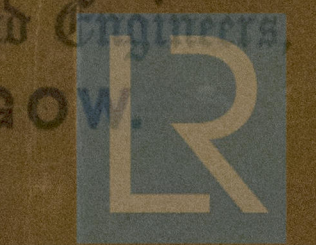
Scale 1/2 inch = 1 foot

Steel Paddle Steamer BRIGHTON Glasgow Report No. 4624



Scale 1/4 inch = 1 foot

JOHN ELDER & CO.,
Shipbuilders and Engineers
GLASGOW.



© 2021
Lloyd's Register
Foundation
LR01526-0053