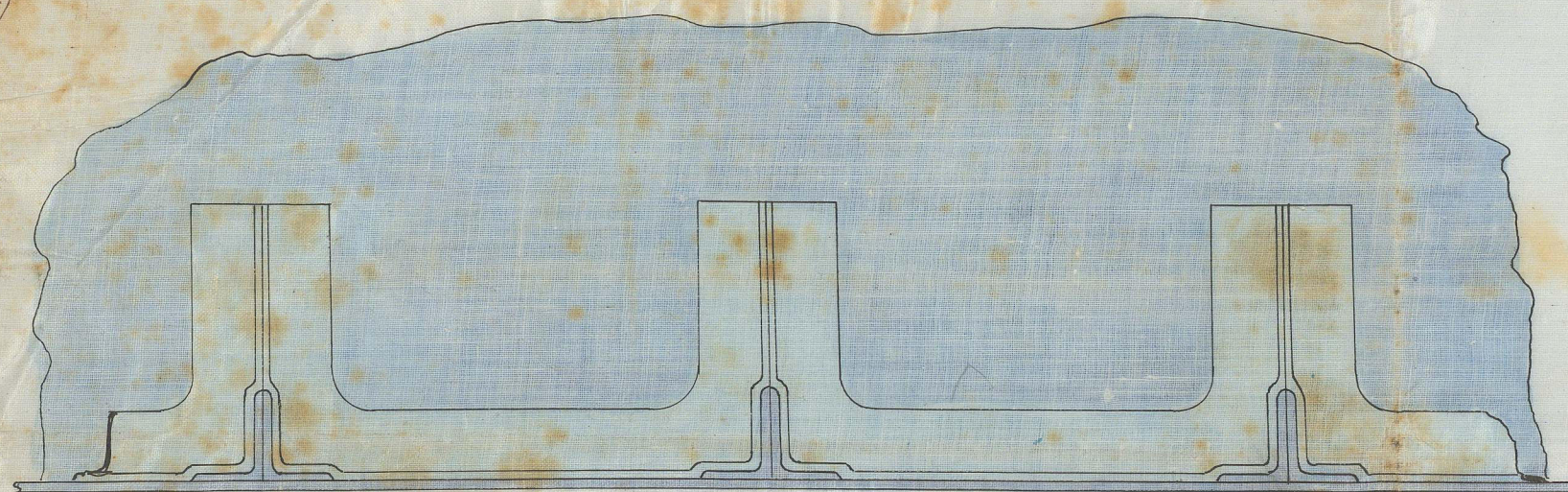


SCALE 1/2 INCH TO A FOOT

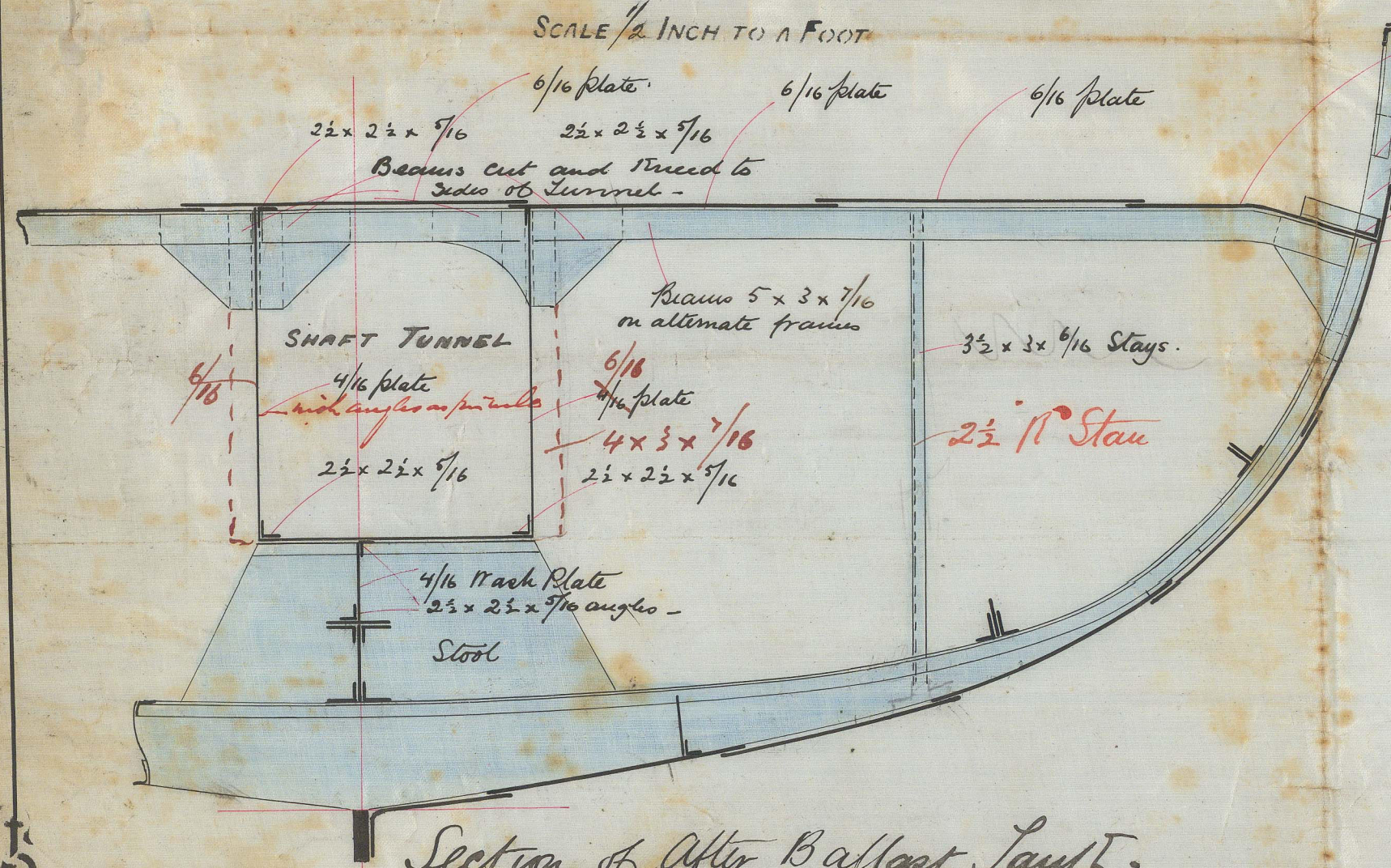


Plan showing Angle iron Colloms fitted round double frames

S.S. "TITUS" No. 2230 Iron 20132  
 Report No. 4594 (Glasgow)  
 Water Ballast Arrangements

Rev 14/7/77  
 RD

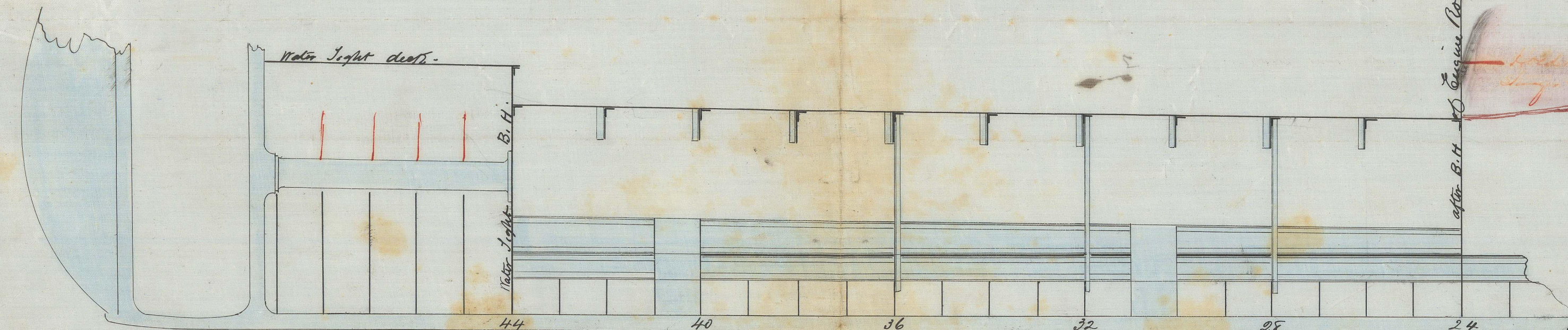
SCALE 1/2 INCH TO A FOOT



Section of After Ballast Tank at fore end.

6/16 plate  
 Reverse frames cut here  
 Frames doubled here for 3 feet  
 3 x 3 x 6/16 Angle iron colloms.  
 Reverse frames cut here.

SCALE 1/4 INCH TO A FOOT



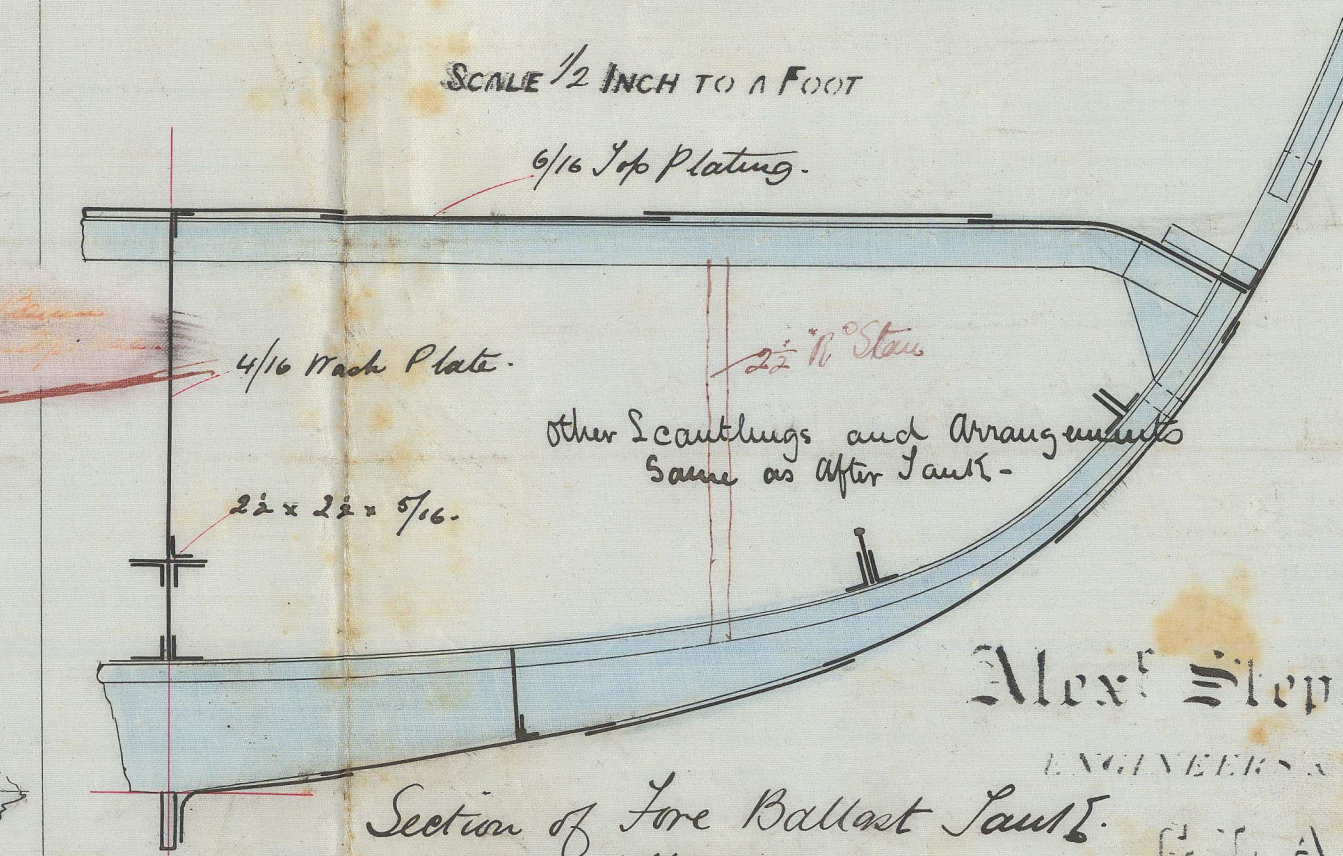
Elevation of After Ballast Tank.

SCALE 1/4 INCH TO A FOOT



Elevation of Fore Ballast Tank.

SCALE 1/2 INCH TO A FOOT



Section of Fore Ballast Tank at after end.

Alex. Stephen & Sons.  
 ENGINEERS & SHIPBUILDERS  
 GLASGOW.

DRAWING No. 882

1800325-0012