

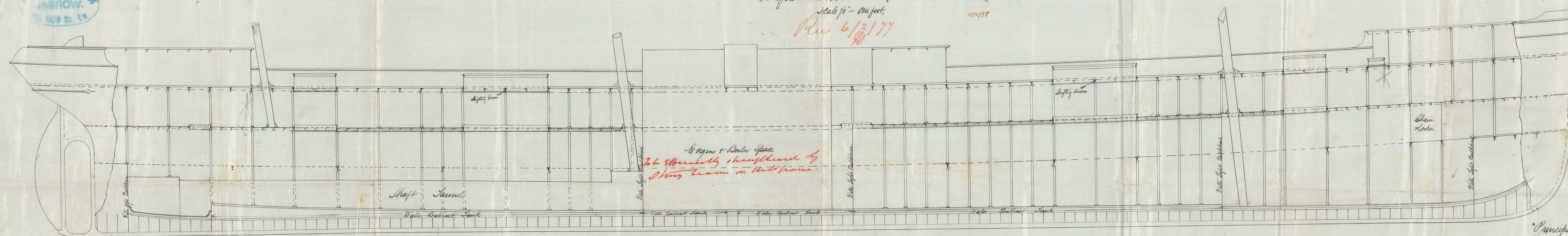
"Merissa." Report No 13751.

Profile & Deck Plan ss. No 354

Scale  $\frac{1}{8}'' = \text{one foot}$

Rec 6/2/77

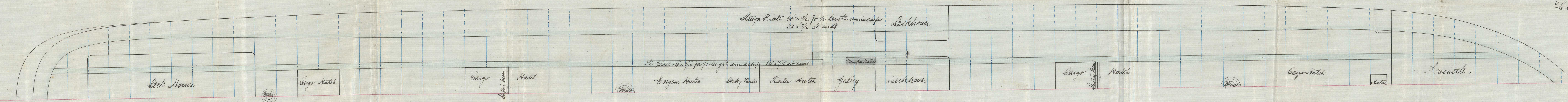
February 2<sup>nd</sup> 1844.



Principal Dimensions

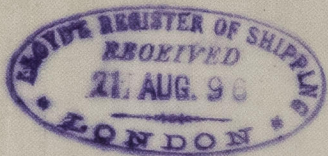
Length as per Rule	284.5
Breadth moulded	34.5
Depth of Hold	24.25

Class 100 A Single  
Mushicken Vessel.



18. Mo  
Apr 27

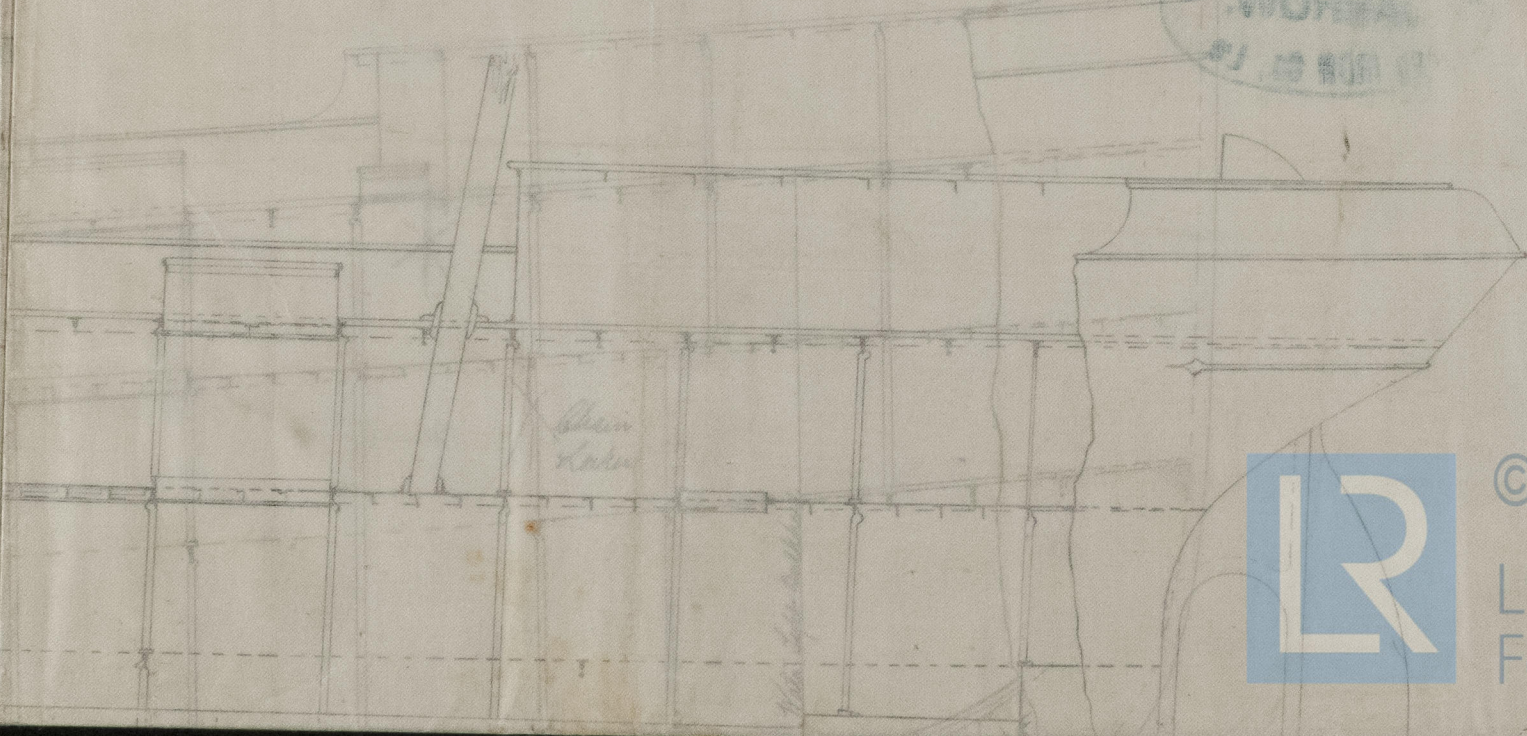
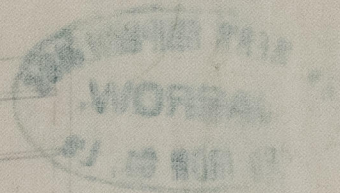




1RONS24-0045

February 2nd 1894.

R/L 2/2



© 2021

Lloyd's Register  
Foundation