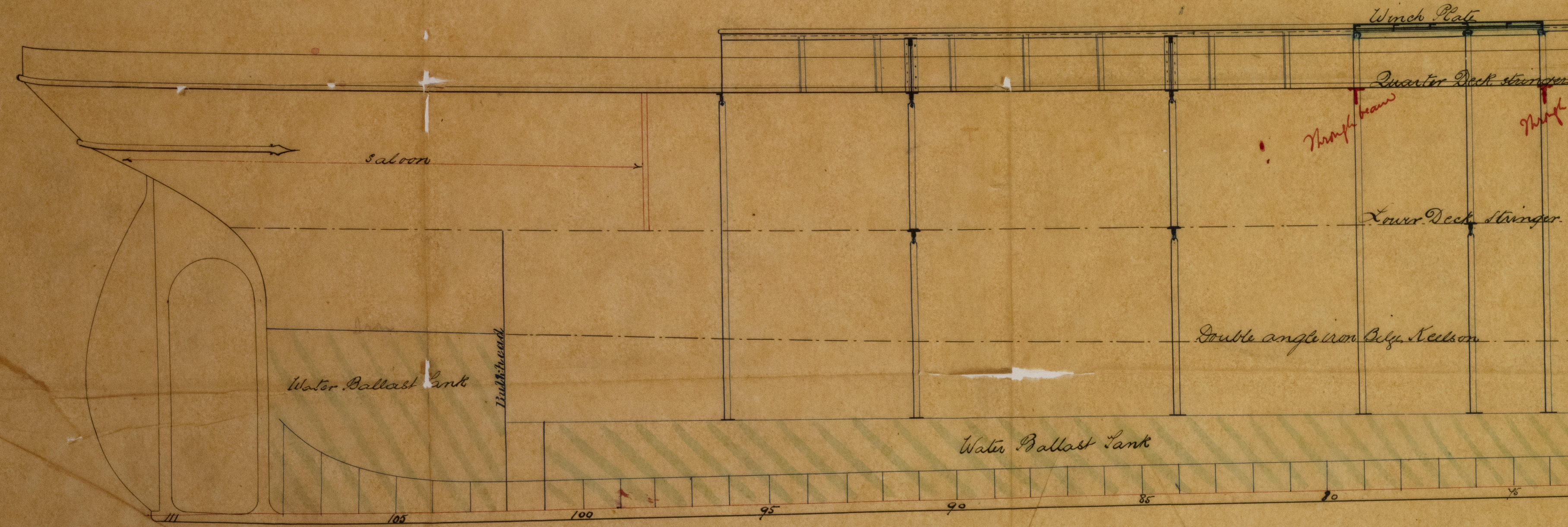


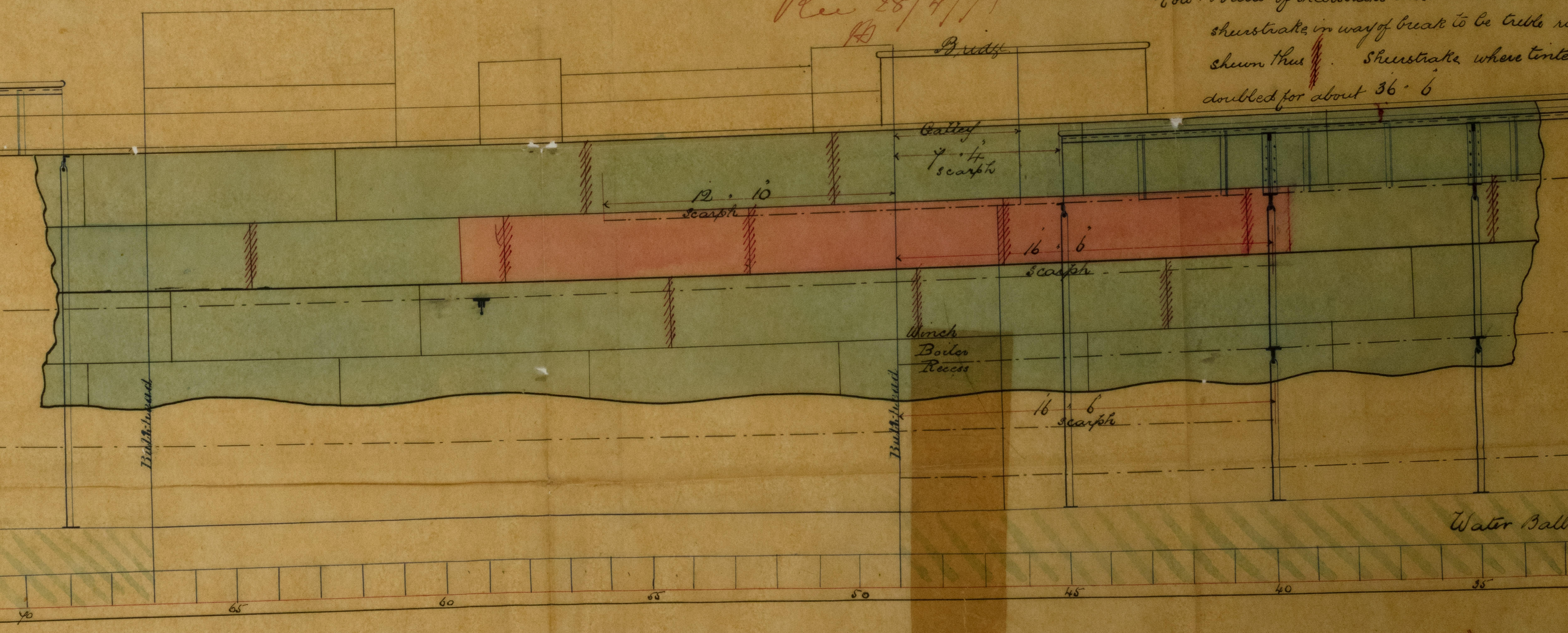
No 76



Continued. Report No 13746.

28/4/77

Rec 28/4/77



Note. Butts of sheerstrake and butts above and sheerstrake in way of break to be trilled in shown thus. Sheerstrake where tinted doubled for about 36 6

SCALE 1/4 INCH TO THE FOOT

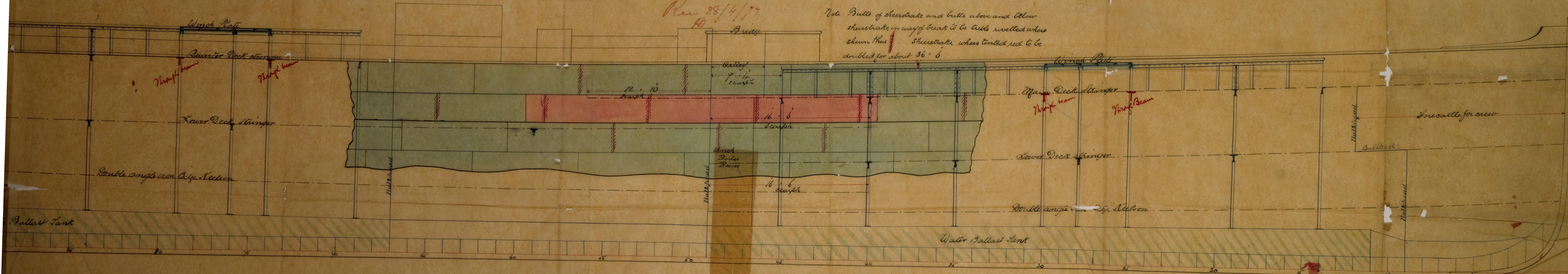


Continued. Report No 13746.

26/4/77

Rec 28/4/77

Note. Butts of sheerstrake and butts above and below sheerstrake in way of break to be triple rivetted where shown thus. Sheerstrake where tinted red to be doubled for about 36' 6"



SCALE 1/4 INCH TO THE FOOT

SCHLESINGER, DAVIS & CO  
IRON SHIP BUILDERS,  
WALLSEND,  
NEWCASTLE-ON-TYNE

LN 76  
Lloyd's Register  
Foundation

IRON 524-0013

30/6/77  
1/2/77  
25/4/77

Rec 26/4/77  
S. Owen



1R0524-0013

Loyds

Correct, 1/6  
und

more of the same



© 2021

Lloyd's Register  
Foundation