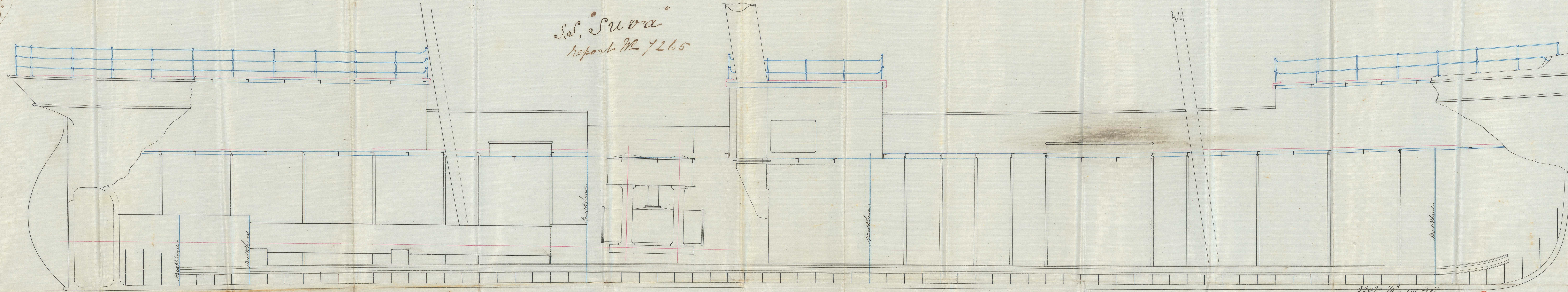


23/11/75

S.S. "Suva"
Report No 7265



Deck & other Plans for S.S. "Suva"
Length over all = 149' 0"
Breadth over all = 21' 6"
Depth of hold = 14' 0" 12-13
Blackwood & Gordon
Port Glasgow

Scale 1/4" = 10 feet.

Rev 22/11/75
H

18W
22/11/75

IRON 522 - 0024