

27/10/76

# Bt "Dumfriesshire" of Liverpool Greenock Report 7233

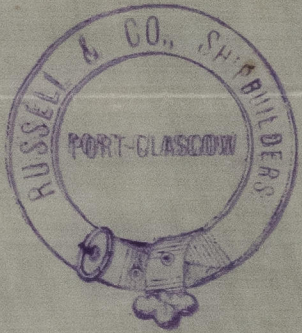
Barge No 10  
1/2 Midship Section.  
Scale 1/2 inch = 1 foot  
Classed Coast

Length between pers 220.0  
Breadth moulded 36.0  
Depth of Hold 21.6

1/2 B 7<sup>th</sup> inc.  
1/2 & 18.0  
1/2 & 37.4  
1/2 & 24.1  
1/2 & 79.5 1<sup>st</sup> op  
1/2 & 22.0  
1/2 & 174.90 2<sup>nd</sup> op  
1/2 & 11.66 1<sup>st</sup> added for equipment  
1/2 & 186.56

Rec 26/10/76

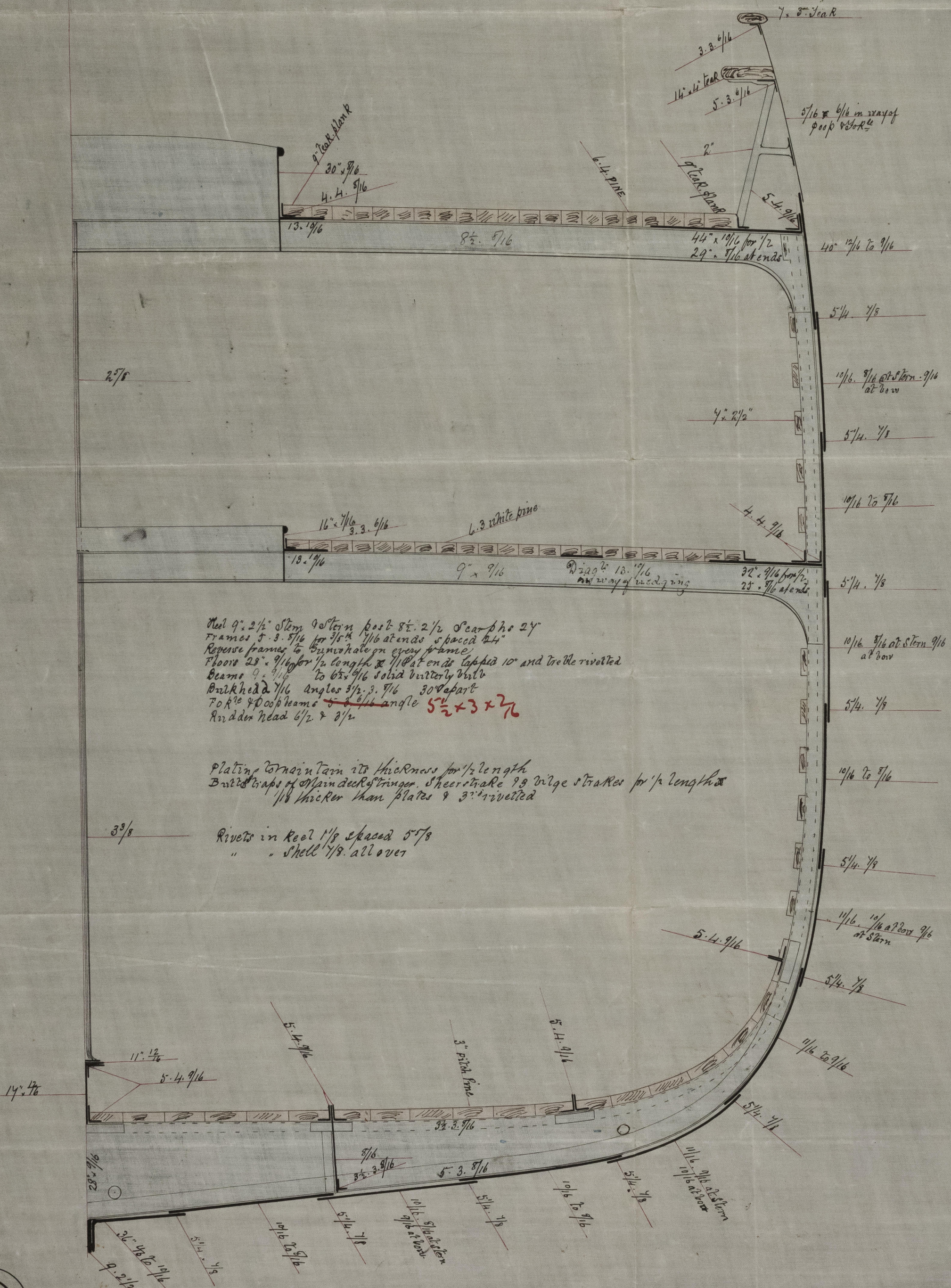
Equipment:  
1 Bower ex. stock 34 Rodgers old  
1 " " " 30 " "  
1 " " " 27 1/4 " "  
1 Stream inc. 13 Common  
1 Ridge " 6 1/2 " "  
1 " " 3 1/4 " "  
270 fathoms 1 1/2 Chain  
98 " 1" Stream Chain



Net 9' 2 1/4" Stern post 8' 2 1/2" Star post 24"  
Frames 3' 3 1/4" for 1/2" at ends spaced 44"  
Reverse frames to Sunwheel on cross frame  
Floors 28' 9 1/4" for 1/2" length & 1/2" at ends tapered 10' and treble rivetted  
Beams 9' 9 1/4" to 67' 9 1/4" solid built by built  
Bulkhead 1/16 angles 3 1/2" x 3 1/2" 30° apart  
For 1/2" 9' 9 1/4" beams 5' 3 1/4" angle 5 1/2" x 3 1/2" x 2 1/2"  
And den head 6 1/2" x 8 1/2"

Plating maintain its thickness for 1/2 length  
Built up of main deck stringer. Sheer strake 18" wide strakes for 1/2 length  
1/8" thicker than plates & 3" rivetted

Rivets in keel 1 1/8" spaced 5 1/8"  
" " Shell 1 1/8" all over



27/10/76

© 2021

Lloyd's Register Foundation

IRON 521-0084