

of
N^o 292

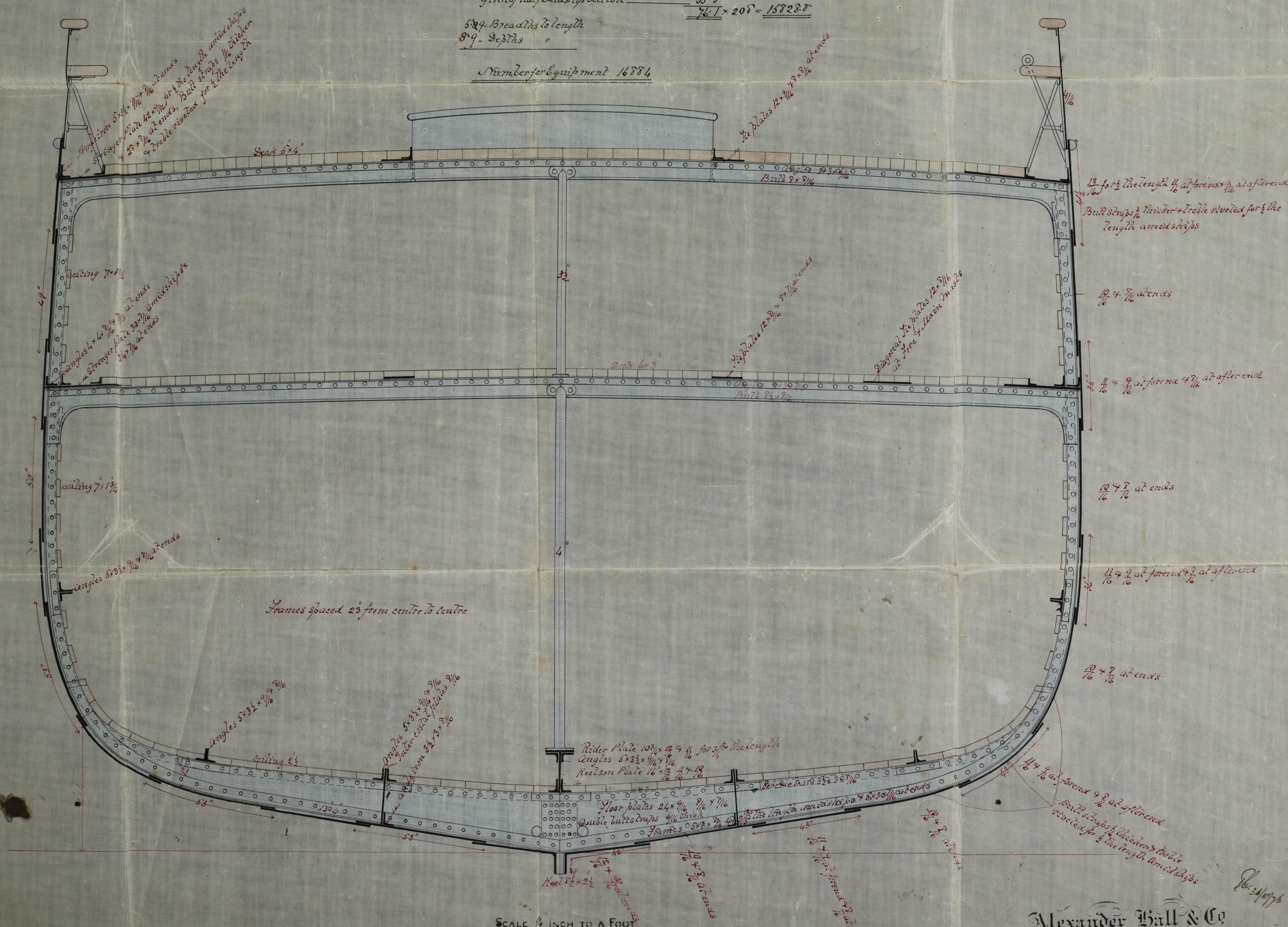
LENGTH BETWEEN PERPENDICULARS _____ 210
BREADTH EXTREME _____ 35
DEPTH IN HOLD _____ 21
TONNAGE REGISTER _____ 1120 tons

TONNAGE REGISTER 1120 tons

Numerals for Scanlings Class 100A.
 Half insulda breadth 17.4
 Depth from top of keel to top of upper deck beams 23.2
 Girth of half midships section 35.5
 $\frac{72.1}{2} \times 208 = 16728.8$

5.89- Breadths to length
8.9- Depths "

Number for Equipment 16884



SCALE $\frac{1}{8}$ INCH TO A FOOT

Alexander Hall & Co
Shipbuilders
ABERDEEN.

© 27/10/76
Lloyd's Register

IRON 521- 0060